

◎ 采用生态纸印刷

特别申明：本资料数据由本公司技术部负责解释，如有参数变更，恕不另行通知。

诚招全国代理商

**+86 19121693505**



**剑桥阀业集团有限公司**  
JIANQIAO VALVES GROUP CO., LTD.

地址：上海市奉贤区大叶公路1888弄158号

Address: No. 158, Lane 1888, Daye highway, Fengxian District, Shanghai

手机M.b: +86 19121693505

传真Fax: 021-69106380

Http://www.jqfm-valve.com

E-mail: info@jqfm-valve.com



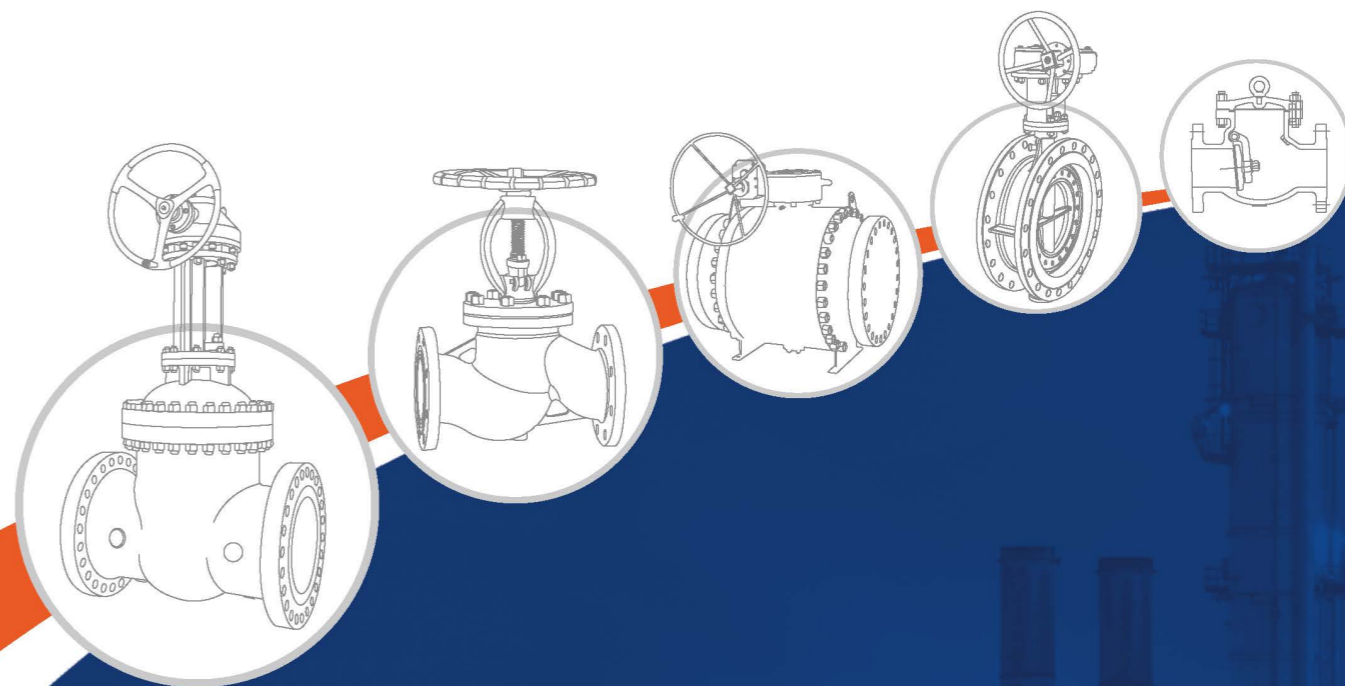
企业官网  
Enterprise official website

JQFM 剑桥阀业集团

**JQFM 剑桥阀业集团**  
JIANQIAO VALVES GROUP

# Industrial valve selection manual 工业阀门选型手册

全方位管道系统阀门集成解决方案  
Comprehensive pipeline system valve integration solution



**剑桥阀业集团有限公司**  
JIANQIAO VALVES GROUP CO., LTD.

全方位管道系统阀门集成解决方案  
Comprehensive pipeline system valve integration solution



目标、责任、能力、沟通、团队  
诚信、创新、安全、智能、高效  
Objective, responsibility, ability, communication, team  
Integrity, innovation, safety, intelligence and efficiency



## 企业简介

Company profile

剑桥阀业集团有限公司创建于九十年代初期，专业生产阀门厂家之一。经过多年的创新与发展，剑桥产品已远销全国各地以及海外市场，深受各界用户欢迎和好评，被评为国家高新技术企业。

剑桥阀业集团公司，总部位于上海市奉贤区大叶公路1888弄158号，拥有现代化厂房12000平方米和研发办公大楼4000多平方米。集团还有两个生产基地，分别位于山西省侯马市经济技术开发区与河北省沧州市泊头开发区，集团位于福建省安溪县2025产业园的80亩生产基地已经开工建设。集团公司技术力量雄厚，设备齐全。现已培养具有专业素质员工326人，拥有高、中级职称技术人员28人。集团拥有先进的生产流水线，检测设备先进齐全；以科学管理的手段保证产品质量的提高，采用微机联网监控管理，全面导入ISO9001质量管理体系、ISO14001环境管理体系、ISO45001职业安全体系；已通过TS（压力管道）特种设备制造许可证、CCC中国国家强制性产品认证证书、获得国际UL证书及FM证书、上海饮用水卫生许可证、上海质量监督检验技术研究院抽检合格单位、欧盟CE、中国消防网等认证，成为国内众多协会单位及国有大型企业的会员合格供应商。公司研发生产的平衡阀、水力控制阀、暖通调节阀、埋地式平板阀被评为国家新产品，多次荣获殊荣，在行业中具有一定影响力，先后多次受到上海市政府相关行业部门的重视，被建设部列入推广应用品牌。

公司先后引进大、中、小型先进设备240台（套），紧凑型热锻压阀门生产线、对夹、单夹、法兰式、硬密封及软密封蝶阀生产线，天然气平板阀、球阀生产线各一条，可生产各国标准、各种传动方式的高品质阀门。主导产品：闸阀、截止阀、球阀、蝶阀、平衡阀、调节阀、止回阀、水力控制阀等八大类，几十个品种，上千种规格。公称口径15mm~2000mm，公称压力0.6MPa~32MPa，适用温度-80℃~550℃，阀体材质：HT200、HT350、ZG25、SA-1051、SA-182F9、SA-182F304、SA-182F316等。产品广泛用于中央空调、给排水、消防工程、市政工程、食品、冶金、矿山、石油、化工、天然气、电站、锅炉、管道设备等，还可以为客户订制生产各种非标产品。

Jianqiao Valves Group Co., Ltd., founded in the early 1990s, is one of the professional valve manufacturers. After years of innovation and development, Cambridge products have been exported to all parts of the country and overseas markets, and have been deeply welcomed and praised by users from all walks of life. It has been rated as a national high-tech enterprise.

Jianqiao valves group company, headquartered at No. 158, Lane 1888, Daye Road, Fengxian District, Shanghai, has a modern plant of 12000 square meters and a R & D office building of more than 4000 square meters. The group also has two production bases, which are located in Houma economic and Technological Development Zone, Shanxi Province and Botou Development Zone, Cangzhou City, Hebei Province. The 80 mu production base of the group in 2025 Industrial Park, Anxi County, Fujian Province has been under construction. The group company has strong technical force and complete equipment. At present, 326 employees with professional quality and 28 technicians with high and intermediate professional titles have been trained. The group has advanced production lines and complete testing equipment; Ensure the improvement of product quality by means of scientific management, adopt microcomputer network monitoring management, and fully introduce ISO9001 quality management system, ISO14001 environmental management system and ISO45001 occupational safety system; It has passed the certification of TS (pressure pipeline) special equipment manufacturing license, CCC China national compulsory product certification, international UL certificate and FM certificate, Shanghai drinking water hygiene license, sampling inspection qualified unit of Shanghai Institute of quality supervision and inspection technology, EU CE, China fire network, etc., and has become a member qualified supplier of many domestic associations and large state-owned enterprises. The balance valve, hydraulic control valve, HVAC control valve and buried flat valve developed and produced by the company have been rated as national new products, won awards for many times and have a certain influence in the industry. They have been valued by relevant industry departments of Shanghai municipal government for many times and listed as a promoted application brand by the Ministry of construction.

The company has successively introduced 240 sets of large, medium and small advanced equipment, compact hot forging valve production line, wafer, single clip, flange, hard seal and soft seal butterfly valve production line, natural gas flat valve and ball valve production line, which can produce high-quality valves with national standards and various transmission modes. Leading products: gate valve, globe valve, ball valve, butterfly valve, balance valve, regulating valve, check valve, hydraulic control valve and other eight categories, dozens of varieties and thousands of specifications. Nominal diameter 15mm-2000mm, nominal pressure 0.6mpa-32mpa, applicable temperature -80℃-550℃, valve body materials: HT200, ht350, ZG25, sa-1051, sa-182f9, sa-182f304, sa-182f316, etc. The products are widely used in central air conditioning, water supply and drainage, fire engineering, municipal engineering, food, metallurgy, mining, petroleum, chemical industry, natural gas, power station, boiler, pipeline equipment, etc. we can also customize and produce various non-standard products for customers.



## > 展厅一角

Corner of exhibition hall

剑桥展厅以独特的设计风格，多方位展示剑桥的产品和企业文化，这里是见证剑桥的发展历程和聚集剑桥丰硕成果的焦点区域。

Jianqiao exhibition hall displays Jianqiao products and corporate culture in multiple directions with a unique design style. This is the focus area to witness the development process of Jianqiao and gather Jianqiao fruitful achievements.



### 让用户得到适合自己需求的解决方案

Let users get solutions that meet their needs

## > 技术创新

Technological innovation

剑桥阀业集团专注于阀门及产品的设计与生产，并致力于将全球先进的流体控制解决方案带给客户，为客户创造更多的价值；  
剑桥阀业集团不仅仅是提供一个性能可靠的设备，更是充分考虑适用性和经济及节能运行的解决方案。

Jianqiao valves group focuses on the design and production of valves and products, And is committed to bringing the world's advanced fluid control solutions to customers, Create more value for customers;  
Jianqiao valves group is not only providing a reliable equipment, More are solutions that fully consider applicability, economy and energy-saving operation,



先进的工艺成就完美品质  
Advanced technology makes perfect quality



## 精良设备

Sophisticated equipment

公司拥有高精度的数控机床和加工中心，先进的设备、精良的工艺以及严格完善的质量管理体系，并聚集具有专业技术精英和高水平的科技队伍，充分利用新技术、新工艺、新材料保证产品的稳定性和可靠性。

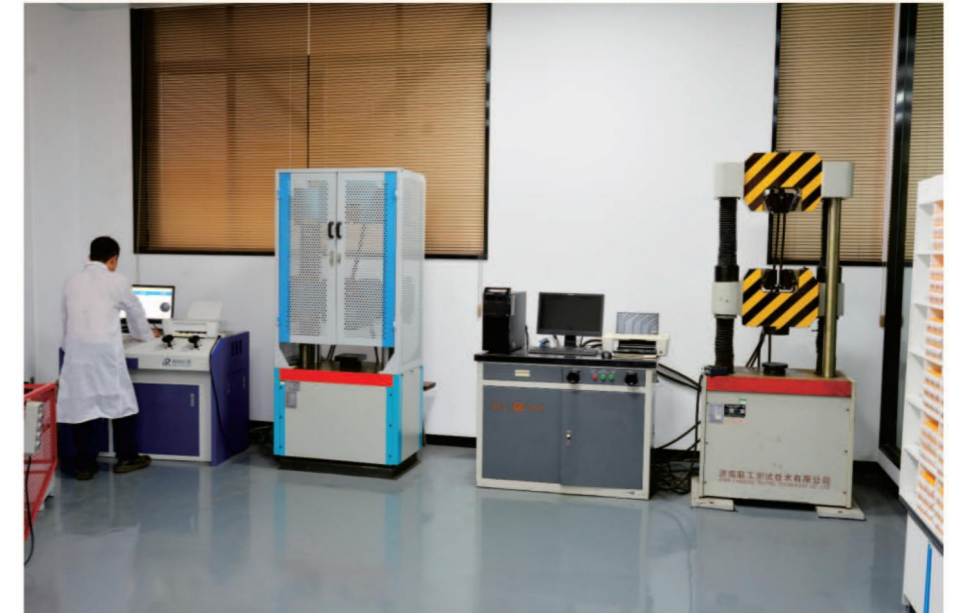
The company has high-precision CNC machine tools and machining centers, Advanced equipment, excellent technology and strict and perfect quality management system, And gather professional and technical elites and high-level scientific and technological teams, Make full use of new technologies, new processes and new materials to ensure the stability and reliability of products.



## > 检测中心 Testing Center

公司配置了先进的检测设备以及完善的检测手段，  
建立了一支严格要求的品质管理队伍，  
实现了从原材料到生产全过程检测，  
产品及应用全过程的质量控制。

The company is equipped with advanced testing equipment and perfect testing means,  
A strict quality management team has been established,  
The whole process detection from raw materials to production is realized,  
Quality control in the whole process of product and Application.



产品及应用全过程质量控制  
Product and application whole process quality control

## 应用领域

Application area

经过多年的发展，剑桥产品以其卓越的产品质量和完善的服务体系，获得了广大用户的一致好评，在行业内树立了良好的企业形象，品牌知名度连年攀升。

产品广泛应用于石油、化工、电力、煤矿、冶金、污水处理、造纸、印染、纺织、热力等领域。

After years of development, Jianqiao products have won unanimous praise from the majority of users with its excellent product quality and perfect service system, established a good corporate image in the industry, and the brand popularity has increased year by year.

The products are widely used in petroleum, chemical industry, electric power, coal mine, metallurgy, sewage treatment, papermaking, printing and dyeing, textile, heat and other fields.



# C 目录 ontents

01/10 ● 闸阀系列  
Gate valve series

11/16 ● 截止阀系列  
Gate valve series

17/21 ● 止回阀系列  
Check valve series

22/32 ● 球阀系列  
Ball valve series

33/37 ● 蝶阀系列  
Butterfly valve series

38/40 ● 锻钢阀门系列  
Forged steel valve series

41/44 ● 燃气阀系列  
Gas valve series

45/52 ● 冶金阀系列  
Metallurgical valve series

53/57 ● 调节阀系列  
Regulating valve series

58/59 ● 电磁阀系列  
Solenoid valve series

60/63 ● 针型阀系列  
Needle valve series

64/67 ● 疏水阀系列  
Drain valve series

68/69 ● 过滤器系列  
Filter series

70/71 ● 减压阀系列  
Pressure reducing valve series

72/75 ● 丝扣阀门系列  
Screw valve series

76/79 ● 衬氟阀门系列  
Fluorine lined valve series

# Gate valve series 闸阀系列

全方位管道系统阀门集成解决方案  
Comprehensive pipeline system valve integration solution

[www.jqfm-valve.com](http://www.jqfm-valve.com)





**Z41H中低压闸阀**  
Medium and low pressure gate valves  
公称口径: DN15~1200mm  
公称压力: PN1.0~4.0MPa  
适用介质: 水、油品、蒸气  
适用温度: ≤650℃  
Nominal Diameter: DN15~1200mm  
Nominal Pressure: PN1.0~4.0MPa  
Mediums: Water, oil, steam  
Temperature Range: ≤650℃



**Z41H高压闸阀**  
High pressure gate valve  
公称口径: DN15~800mm  
公称压力: PN10~16MPa  
适用介质: 水、油品、蒸气  
适用温度: ≤650℃  
Nominal Diameter: DN15~800mm  
Nominal Pressure: PN10~16MPa  
Mediums: Water, oil, steam  
Temperature Range: ≤650℃



**Z540Y伞齿轮闸阀**  
Bevel gear gate valve  
公称口径: DN300~1200mm  
公称压力: PN1.0~16MPa  
适用介质: 水、蒸汽、油品  
适用温度: ≤650℃  
Nominal Diameter: DN300~1200mm  
Nominal Pressure: PN1.0~16MPa  
Mediums: Water, steam, oil  
Temperature Range: ≤650℃



**Z941H电动闸阀**  
Electric gate valve  
公称口径: DN15~1200mm  
公称压力: PN1.0~16MPa  
适用介质: 水、蒸汽、油品  
适用温度: ≤650℃  
Nominal Diameter: DN15~1200mm  
Nominal Pressure: PN1.0~16MPa  
Mediums: Water, steam, oil  
Temperature Range: ≤650℃



**Z641H气动闸阀**  
Pneumatic gate valve  
公称口径: DN15~1200mm  
公称压力: PN1.0~16MPa  
适用介质: 水、蒸汽、油品  
适用温度: ≤650℃  
Nominal Diameter: DN15~1200mm  
Nominal Pressure: PN1.0~16MPa  
Mediums: Water, steam, oil  
Temperature Range: ≤650℃



**Z41W不锈钢闸阀**  
Stainless steel gate valve  
公称口径: DN15~1200mm  
公称压力: PN1.0~16MPa  
适用介质: 水、蒸汽、油品  
适用温度: ≤650℃  
Nominal Diameter: DN15~1200mm  
Nominal Pressure: PN1.0~16MPa  
Mediums: Water, steam, oil  
Temperature Range: ≤650℃



**DZ40Y低温闸阀**  
Low temperature gate valve  
公称口径: DN15~400mm  
公称压力: PN1.0~4.0MPa  
适用介质: 甲烷、液态天然气等  
适用温度: ≥-196℃  
Nominal Diameter: DN15~400mm  
Nominal Pressure: PN1.0~4.0MPa  
Mediums: Methane, liquid natural gas, etc  
Temperature Range: ≥-196℃



**Z40W美标闸阀**  
American standard gate valve  
公称口径: 1/2"~40"  
公称压力: 150~1500LB  
适用介质: 水、蒸汽、油品  
适用温度: ≤650℃  
Nominal Diameter: 1/2"~40"  
Nominal Pressure: 150~1500LB  
Mediums: Water, steam, oil  
Temperature Range: ≤650℃



**Z41W苏式闸阀**  
Soviet gate valve  
公称口径: DN10~1000mm  
公称压力: PN1.6~16MPa  
适用介质: 水、油品、蒸气  
适用温度: ≤650℃  
Nominal Diameter: DN10~1000mm  
Nominal Pressure: PN1.6~16MPa  
Mediums: Water, oil, steam  
Temperature Range: ≤650℃



**WZ41H德标波纹管闸阀**  
German standard bellows gate valve  
公称口径: DN15~350mm  
公称压力: PN1.6~16MPa  
适用介质: 水、油品、蒸气  
适用温度: ≤650℃  
Nominal Diameter: DN15~350mm  
Nominal Pressure: PN1.6~16MPa  
Mediums: Water, oil, steam  
Temperature Range: ≤650℃



**WZ41H国标波纹管式闸阀**  
GB Corrugated gate valve  
公称口径: DN40~500mm  
公称压力: 1.0~10.0MPa  
适用介质: 水、蒸汽、油品  
适用温度: ≤650℃  
Nominal Diameter: DN40~500mm  
Nominal Pressure: 1.0~10.0MPa  
Mediums: Water, steam, oil  
Temperature Range: ≤650℃



**WZ41H美标波纹管式闸阀**  
API corrugated gate valve  
公称口径: 1/2"~20"  
公称压力: PN150~900Lb  
适用介质: 水、蒸汽、油品  
适用温度: ≤650℃  
Nominal Diameter: 1/2"~20"  
Nominal Pressure: PN150~900Lb  
Mediums: Water, steam, oil  
Temperature Range: ≤650℃



**FDZ45H防盗闸阀**  
Security gate valve  
公称口径: DN40~200mm  
公称压力: PN1.0~4.0MPa  
适用介质: 水、蒸汽、油品  
适用温度: ≤650℃  
Nominal Diameter: DN40~200mm  
Nominal Pressure: PN1.0~4.0MPa  
Mediums: Water, steam, oil  
Temperature Range: ≤650℃



**BZ41Y保温闸阀**  
Insulation gate valve  
公称口径: DN40~500mm  
公称压力: PN1.0~10.0MPa  
适用介质: 水、硝酸、尿素、碱类  
适用温度: ≤650℃  
Nominal Diameter: DN40~500mm  
Nominal Pressure: PN1.0~10.0MPa  
Mediums: Water, nitric acid, urea, alkali  
Temperature Range: ≤650℃



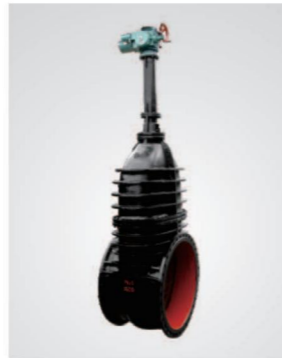
**Z45H暗杆闸阀**  
Non rising stem gate valve  
公称口径: DN50~1000mm  
公称压力: PN1.6~4.0MPa  
适用介质: 水、蒸汽、油品  
适用温度: ≤650℃  
Nominal Diameter: DN50~1000mm  
Nominal Pressure: PN1.6~4.0MPa  
Mediums: Water, steam, oil  
Temperature Range: ≤650℃



**Z40W美标闸阀**  
API gate valve  
公称口径: 1/2"~40"  
公称压力: 150~1500LB  
适用介质: 水、蒸汽、油品  
适用温度: ≤650℃  
Nominal Diameter: 1/2"~40"  
Nominal Pressure: 150~1500LB  
Mediums: Water, steam, oil  
Temperature Range: ≤650℃



**Z45H加长杆钢制低压闸阀**  
The extension rod steel low pressure valve  
公称口径: DN40~800mm  
公称压力: PN0.6~1.0MPa  
适用介质: 水、蒸汽、油品  
适用温度: ≤650℃  
Nominal diameter: DN40 ~ 800mm  
Nominal pressure: PN0.6 ~ 1.0MPa  
Mediums: water, steam, oil  
Temperature Range: ≤650℃



**Z941T电动明杆铸铁闸阀**  
Electric rising stem cast iron gate valve  
公称口径: DN40~2600mm  
公称压力: PN0.25MPa  
适用介质: 水、蒸汽、油品、煤气  
适用温度: ≤100℃  
Nominal Diameter: DN40~2600mm  
Nominal Pressure: PN0.25MPa  
Mediums: Water, steam, oil, gas  
Temperature Range: ≤100℃



**Z41Y锻造电站法兰闸阀**  
Flanged gate valve for forging power station  
公称口径: DN40~2600mm  
公称压力: PN0.6~1.0MPa  
适用介质: 水、蒸汽、油品、酸性介质  
适用温度: ≤650℃  
Nominal Diameter: DN40~2600mm  
Nominal Pressure: PN0.6~1.0MPa  
Mediums: Water, steam, oil, acid medium  
Temperature Range: ≤650℃



**Z961H高温高压整体锻钢闸阀**  
High pressure and high temperature solid forged steel valve  
公称口径: DN15~350mm  
公称压力: 1.0~32.0MPa  
适用介质: 水、蒸汽、石油  
适用温度: ≤650℃  
Nominal Diameter: DN15~350mm  
Nominal Pressure: PN1.0~32.0MPa  
Mediums: Water, steam, oil  
Temperature Range: ≤650℃



**Z960/962Y国标电站闸阀**  
GB power station gate valve  
公称口径: DN40~600mm  
公称压力: PN1.0~32MPa  
适用介质: 水、蒸汽、油品  
适用温度: ≤650℃  
Nominal Diameter: DN40~600mm  
Nominal Pressure: PN1.0~32MPa  
Mediums: Water, steam, oil  
Temperature Range: ≤650℃



**Z542Y电站法兰闸阀**  
Station flanged gate valve  
公称口径: DN15~800mm  
公称压力: PN1.0~25.0MPa  
适用介质: 水、蒸汽、油品  
适用温度: ≤650℃  
Nominal Diameter: DN15~800mm  
Nominal Pressure: PN1.0~25.0MPa  
Mediums: Water, steam, oil  
Temperature Range: ≤650℃



**Z60Y高温高压焊接闸阀**  
High temperature and high pressure welded gate valve  
公称口径: DN50~225mm  
公称压力: PN10.0~25.0MPa  
适用介质: 水、蒸汽、油品  
适用温度: ≤650℃  
Nominal Diameter: DN50~225mm  
Nominal Pressure: PN10.0~25.0MPa  
Mediums: Water, steam, oil  
Temperature Range: ≤650℃



**Z460Y正伞齿轮焊接闸阀**  
Bevel gear welding gate valve  
公称口径: 1/2"~40"  
公称压力: 150~1500LB  
适用介质: 水、蒸汽、油品  
适用温度: ≤650℃  
Nominal Diameter: 1/2"~40"  
Nominal Pressure: 150~1500LB  
Mediums: Water, steam, oil  
Temperature Range: ≤650℃



**Z41W水封闸阀**  
Soviet gate valve  
公称口径: DN10~600mm  
公称压力: PN1.6~16MPa  
适用介质: 水、油品、蒸气  
适用温度: ≤650℃  
Nominal Diameter: DN10~600mm  
Nominal Pressure: PN1.6~16MPa  
Mediums: Water, oil, steam  
Temperature Range: ≤650℃



**Z2仿41Y带吹扫孔闸阀**  
With purge holes gate valve  
公称口径: DN40~1200mm  
公称压力: PN1.0~16.0MPa  
适用介质: 烟气、粉末状、颗粒状  
适用温度: ≤650℃  
Nominal Diameter: DN40~1200mm  
Nominal Pressure: PN1.0~16.0MPa  
Mediums: Flue gas, powder, granular  
Temperature Range: ≤650℃



**Z41Y铬钼钢闸阀**  
Chrome molybdenum steel gate valve  
公称口径: DN15~800mm  
公称压力: 1.6~16.0MPa  
适用介质: 水、蒸汽、油品  
适用温度: ≤540℃  
Nominal Diameter: DN15~800mm  
Nominal Pressure: 1.6~16.0MPa  
Mediums: Water, steam, oil  
Temperature Range: ≤540℃



**DKZ41H真空隔离闸板阀**  
The vacuum gate valve  
公称口径: DN50~1000mm  
公称压力: PN1.0~10.0MPa  
适用介质: 水、蒸汽、油品  
适用温度: ≤650℃  
Nominal Diameter: DN50~1000mm  
Nominal Pressure: PN1.0~10.0MPa  
Mediums: Water, steam, oil  
Temperature Range: ≤650℃



**Z41H真空隔离阀**  
Vacuum isolation valve  
公称口径: DN15~1200mm  
公称压力: PN1.0~10.0MPa  
适用介质: 水、蒸汽、油品  
适用温度: ≤650℃  
Nominal Diameter: DN15~1200mm  
Nominal Pressure: PN1.0~10.0MPa  
Mediums: Water, steam, oil  
Temperature Range: ≤650℃



**PZ941H排渣闸阀**  
Dregs gate valve  
公称口径: DN50~500mm  
公称压力: PN1.0~6.4MPa  
适用介质: 水、蒸汽、油品  
适用温度: ≤650℃  
Nominal Diameter: DN50~500mm  
Nominal Pressure: PN1.0~6.4MPa  
Mediums: Water, steam, oil  
Temperature Range: ≤650℃



**PZ41TC陶瓷闸阀**  
Ceramic gate valve  
公称口径: DN50~600mm  
公称压力: PN1.0~4.0MPa  
适用介质: 干灰、粉、煤灰及固体颗粒  
适用温度: ≤350℃  
Nominal Diameter: DN50~600mm  
Nominal Pressure: PN1.0~4.0MPa  
Mediums: Dry ash, fly ash and solid particles  
Temperature Range: ≤350℃



**PZ941TC电动陶瓷闸阀**  
Electric ceramic gate valve  
公称口径: DN50~600mm  
公称压力: PN1.0~6.4MPa  
适用介质: 水、蒸汽、油品  
适用温度: ≤500℃  
Nominal Diameter: DN50~600mm  
Nominal Pressure: PN1.0~6.4MPa  
Mediums: Water, steam, oil  
Temperature Range: ≤500℃



**Z43W平板闸阀**  
Flat gate valve

公称口径: 2"~20"  
公称压力: 300~1500Lb  
适用介质: 水、蒸汽、油品  
适用温度: ≤220°C  
Nominal Diameter: 2"~20"  
Nominal Pressure: 300~1500Lb  
Mediums: Water, steam, oil  
Temperature Range: ≤220°C



**Z43F平板闸阀**  
Flat gate valve

公称口径: DN25~1000mm  
公称压力: PN1.0~6.4MPa  
适用介质: 水、蒸汽、油品  
适用温度: ≤180°C  
Nominal Diameter: DN25~1000mm  
Nominal Pressure: PN1.0~6.4MPa  
Mediums: Water, steam, oil  
Temperature Range: ≤180°C



**Z44WY双闸板平板闸阀**  
Double ram flat gate valve

公称口径: 2"~12"  
公称压力: 300~900Lb  
适用介质: 水、蒸汽、油品  
适用温度: ≤220°C  
Nominal Diameter: 2"~12"  
Nominal Pressure: 300~900Lb  
Mediums: Water, steam, oil  
Temperature Range: ≤220°C



**Z43Y特种材质平板闸阀**  
Special material flat gate valve

公称口径: DN50~1000mm  
公称压力: PN1.0~6.4MPa  
适用介质: 水、蒸汽、油品  
适用温度: ≤650°C  
Nominal Diameter: DN50~1000mm  
Nominal Pressure: PN1.0~6.4MPa  
Mediums: Water, steam, oil  
Temperature Range: ≤650°C



**Z43WF无导流孔平板闸阀**  
Flat gate valve without diversion hole

公称口径: DN50~800mm  
公称压力: PN1.6~2.5MPa  
适用介质: 水、蒸汽、油品  
适用温度: ≤200°C  
Nominal Diameter: DN50~800mm  
Nominal Pressure: PN1.6~2.5MPa  
Mediums: Water, steam, oil  
Temperature Range: ≤200°C



**Z43F带导流孔平板闸阀**  
Flat gate valve with diversion hole

公称口径: DN40~1000mm  
公称压力: PN1.6~6.4MPa  
适用介质: 水、油、天然气  
适用温度: ≤200°C  
Nominal Diameter: DN40~1000mm  
Nominal Pressure: PN1.6~6.4MPa  
Mediums: Water, oil, natural gas  
Temperature Range: ≤200°C



**MZ47F带放散管法兰式燃气闸阀**  
Flange type gas gate valve with blow off pipe

公称口径: DN25~1000mm  
公称压力: PN1.6~6.4MPa  
适用介质: 水、蒸汽、油品  
适用温度: ≤600°C  
Nominal Diameter: DN25~1000mm  
Nominal Pressure: PN1.6~6.4MPa  
Mediums: Water, steam, oil  
Temperature Range: ≤600°C



**Z543F伞齿轮平板闸阀**  
Bevel gear flat gate valve

公称口径: DN50~800mm  
公称压力: PN1.6~2.5MPa  
适用介质: 水、蒸汽、油品  
适用温度: ≤200°C  
Nominal Diameter: DN50~800mm  
Nominal Pressure: PN1.6~2.5MPa  
Mediums: Water, steam, oil  
Temperature Range: ≤200°C



**Z43F导流孔平行式闸阀**  
Z43F diversion hole parallel gate valve

公称口径: DN50~800mm  
公称压力: PN1.6MPa  
适用介质: 水、蒸汽、油品  
适用温度: ≤220°C  
Nominal Diameter: DN50~800mm  
Nominal Pressure: PN1.6MPa  
Mediums: Water, steam, oil  
Temperature Range: ≤220°C



**Z943F带导流孔平板闸阀**  
With deflector flat gate valve

公称口径: DN50~1000mm  
公称压力: PN1.0~6.4MPa  
适用介质: 水、蒸汽、油品  
适用温度: ≤180°C  
Nominal Diameter: DN50~1000mm  
Nominal Pressure: PN1.0~6.4MPa  
Mediums: Water, steam, oil  
Temperature Range: ≤180°C



**Z643Y气动排渣平板闸阀**  
Pneumatic slag discharge flat gate valve

公称口径: DN50~800mm  
公称压力: PN1.0~16.0MPa  
适用介质: 水、蒸汽、油品  
适用温度: ≤220°C  
Nominal Diameter: DN50~800mm  
Nominal Pressure: PN1.0~16.0MPa  
Mediums: Water, steam, oil  
Temperature Range: ≤220°C



**Z644WY气动平行双闸板闸阀**  
Pneumatic parallel double gate valve

公称口径: DN25~1000mm  
公称压力: PN1.0~6.4MPa  
适用介质: 水、蒸汽、油品  
适用温度: ≤650°C  
Nominal Diameter: DN25~1000mm  
Nominal Pressure: PN1.0~6.4MPa  
Mediums: Water, steam, oil  
Temperature Range: ≤650°C



**MZ47F埋地燃气平板闸阀**  
Buried gas flat gate valve

公称口径: DN40~1000mm  
公称压力: PN1.6~6.4MPa  
适用介质: 水、油、天然气  
适用温度: ≤120°C  
Nominal Diameter: DN40~1000mm  
Nominal Pressure: PN1.6~6.4MPa  
Mediums: Water, oil, natural gas  
Temperature Range: ≤120°C



**Z547F高压燃气平板闸阀**  
High pressure gas flat gate valve

公称口径: DN25~1000mm  
公称压力: PN1.6~6.4MPa  
适用介质: 水、蒸汽、油品  
适用温度: ≤200°C  
Nominal Diameter: DN25~1000mm  
Nominal Pressure: PN1.6~6.4MPa  
Mediums: Water, steam, oil  
Temperature Range: ≤200°C



**Z43Y高压平板闸阀**  
High pressure flat gate valve

公称口径: DN25~1000mm  
公称压力: PN1.6~6.4MPa  
适用介质: 水、蒸汽、油品  
适用温度: ≤650°C  
Nominal Diameter: DN25~1000mm  
Nominal Pressure: PN1.6~6.4MPa  
Mediums: Water, steam, oil  
Temperature Range: ≤650°C



**ZF43Y平板闸阀**  
Flat gate valve

公称口径: DN50~800mm  
公称压力: PN1.6~2.5MPa  
适用介质: 水、蒸汽、油品  
适用温度: ≤200°C  
Nominal Diameter: DN50~800mm  
Nominal Pressure: PN1.6~2.5MPa  
Mediums: Water, steam, oil  
Temperature Range: ≤200°C



**Z43Y注水平板闸阀**  
Water injection flat gate valve

公称口径: DN40~300mm  
公称压力: PN1.6~32MPa  
适用介质: 水、油、天然气  
适用温度: ≤650℃  
Nominal Diameter: DN40~300mm  
Nominal Pressure: PN1.6~32MPa  
Mediums: Water, oil, natural gas  
Temperature Range: ≤650℃



**Z63Y平行式闸阀**  
Parallel gate valve

公称口径: DN25~150mm  
公称压力: PN16.0~40.0MPa  
适用介质: 水、油品、蒸气  
适用温度: ≤650℃  
Nominal Diameter: DN25~150mm  
Nominal Pressure: PN16.0~40.0MPa  
Mediums: Water, oil, steam  
Temperature Range: ≤650℃



**GPZ83Y卡箍式高压平板闸阀**  
Clamp type high-pressure flat gate valve

公称口径: DN40~300mm  
公称压力: PN1.6~32MPa  
适用介质: 水、油、天然气  
适用温度: ≤650℃  
Nominal Diameter: DN40~300mm  
Nominal Pressure: PN1.6~32MPa  
Mediums: Water, oil, natural gas  
Temperature Range: ≤650℃



**J86Y卡箍式节流截止阀**  
Clamp type throttle globe valve

公称口径: DN25~150mm  
公称压力: PN16.0~35.0MPa  
适用介质: 水、油品、蒸气  
适用温度: ≤650℃  
Nominal Diameter: DN25~150mm  
Nominal Pressure: PN16.0~35.0MPa  
Mediums: Water, steam, oil  
Temperature Range: ≤650℃



**J46Y平衡式节流截止阀**  
Balanced throttle globe valve

公称口径: DN25~200mm  
公称压力: PN16.0~35.0MPa  
适用介质: 水、蒸汽、油品  
适用温度: ≤650℃  
Nominal Diameter: DN25~200mm  
Nominal Pressure: PN16.0~35.0MPa  
Mediums: Water, steam, oil  
Temperature Range: ≤650℃



**J66Y平衡式多用途截止阀**  
Balanced multipurpose globe valve

公称口径: DN25~150mm  
公称压力: PN16.0~35.0MPa  
适用介质: 水、硝酸、尿素  
适用温度: ≤650℃  
Nominal Diameter: DN25~150mm  
Nominal Pressure: PN16.0~35.0MPa  
Mediums: Water, nitrate, urea  
Temperature Range: ≤650℃



**LJ67Y高压调节角式截止阀**  
High pressure regulating angle globe valve

公称口径: DN50~1000mm  
公称压力: PN1.6~4.0MPa  
适用介质: 水、蒸汽、油品  
适用温度: ≤650℃  
Nominal Diameter: DN50~1000mm  
Nominal Pressure: PN1.6~4.0MPa  
Mediums: Water, steam, oil  
Temperature Range: ≤650℃



**HG61A油田超高压止回阀**  
Oilfield ultra high pressure check valve

公称口径: DN25~200mm  
公称压力: PN1.6~4.0MPa  
适用介质: 水、蒸汽、油品  
适用温度: ≤650℃  
Nominal Diameter: DN25~200mm  
Nominal Pressure: PN1.6~4.0MPa  
Mediums: Water, steam, oil  
Temperature Range: ≤650℃



**PZ73H刀型闸阀**  
Knife gate valve

公称口径: DN50~600mm  
公称压力: PN0.6~1.6MPa  
适用介质: 水、纸浆  
适用温度: ≤650℃  
Nominal Diameter: DN50~600mm  
Nominal Pressure: PN0.6~1.6MPa  
Mediums: Water, pulp  
Temperature Range: ≤650℃



**PFZ73梅花刀型闸阀**  
Plum blossom knife gate valve

公称口径: DN50~2000mm  
公称压力: PN0.6~2.5MPa  
适用介质: 纸浆、污水、煤浆、泥浆  
适用温度: ≤650℃  
Nominal Diameter: DN50~2000mm  
Nominal Pressure: PN0.6~2.5MPa  
Mediums: Pulp, sewage, coal slurry, slurry  
Temperature Range: ≤650℃



**Z73X手动浆液阀**  
Manual slurry valve

公称口径: DN50~1000mm  
公称压力: PN0.6~2.5MPa  
适用介质: 纸浆、污水、煤浆、泥浆  
适用温度: ≤120℃  
Nominal Diameter: DN50~1000mm  
Nominal Pressure: PN0.6~2.5MPa  
Mediums: Pulp, sewage, coal slurry, slurry  
Temperature Range: ≤120℃



**Z673X浆液阀**  
Slurry valve

公称口径: DN50~600mm  
公称压力: PN0.6~1.6MPa  
适用介质: 水、纸浆  
适用温度: ≤120℃  
Nominal Diameter: DN50~600mm  
Nominal Pressure: PN0.6~1.6MPa  
Mediums: Water, pulp  
Temperature Range: ≤120℃



**Z41H链轮传动刀型闸阀**  
Sprocket driven knife gate valve

公称口径: DN15~800mm  
公称压力: PN10.0~25.0MPa  
适用介质: 纸浆、污水、煤浆、泥浆  
适用温度: ≤650℃  
Nominal Diameter: DN15~800mm  
Nominal Pressure: PN10.0~25.0MPa  
Mediums: Pulp, sewage, coal slurry, slurry  
Temperature Range: ≤650℃



**PZ773液动刀型闸阀**  
Hydraulic knife gate valve

公称口径: DN50~2000mm  
公称压力: PN0.6~2.5MPa  
适用介质: 水、纸浆  
适用温度: ≤650℃  
Nominal Diameter: DN50~2000mm  
Nominal Pressure: PN0.6~2.5MPa  
Mediums: Water, pulp  
Temperature Range: ≤650℃



**PZ575伞齿轮传动刀型闸阀**  
Bevel gear drive knife gate valve

公称口径: DN50~2000mm  
公称压力: PN0.6~2.5MPa  
适用介质: 纸浆、污水、煤浆、泥浆  
适用温度: ≤120℃  
Nominal Diameter: DN50~2000mm  
Nominal Pressure: PN0.6~2.5MPa  
Mediums: Pulp, sewage, coal slurry, slurry  
Temperature Range: ≤120℃



**Z973X电动浆液阀**  
Flat gate valve

公称口径: DN50~1200mm  
公称压力: PN0.6~2.5MPa  
适用介质: 纸浆、污水、煤浆、泥浆  
适用温度: ≤120℃  
Nominal Diameter: DN50~1200mm  
Nominal Pressure: PN0.6~2.5MPa  
Mediums: Pulp, sewage, coal slurry, slurry  
Temperature Range: ≤120℃



**PZ973电动刀型闸阀**  
Electric knife gate valve

公称口径: DN50~2000mm  
公称压力: PN0.6~2.5MPa  
适用介质: 纸浆、污水、煤浆、泥浆  
适用温度: ≤120°C  
Nominal Diameter: DN50~2000mm  
Nominal Pressure: PN0.6~2.5MPa  
Mediums: Pulp, sewage, coal slurry, slurry  
Temperature Range: ≤120°C



**PZ243电液动刀型闸阀**  
Electro hydraulic knife gate valve

公称口径: DN50~2000mm  
公称压力: PN0.6~2.5MPa  
适用介质: 纸浆、污水、煤浆、泥浆  
适用温度: ≤120°C  
Nominal Diameter: DN50~2000mm  
Nominal Pressure: PN0.6~2.5MPa  
Mediums: Pulp, sewage, coal slurry, slurry  
Temperature Range: ≤120°C



**PZ673气动刀型闸阀**  
Pneumatic knife gate valve

公称口径: DN50~1400mm  
公称压力: PN0.6~2.5MPa  
适用介质: 纸浆、污水、煤浆、泥浆  
适用温度: ≤120°C  
Nominal Diameter: DN50~1400mm  
Nominal Pressure: PN0.6~2.5MPa  
Mediums: Pulp, sewage, coal slurry, slurry  
Temperature Range: ≤120°C



**PZ643气动刀型闸阀**  
Pneumatic knife gate valve

公称口径: DN50~2000mm  
公称压力: PN0.6~2.5MPa  
适用介质: 纸浆、污水、煤浆、泥浆  
适用温度: ≤120°C  
Nominal Diameter: DN50~2000mm  
Nominal Pressure: PN0.6~2.5MPa  
Mediums: Pulp, sewage, coal slurry, slurry  
Temperature Range: ≤120°C



**Z674TC陶瓷出料阀**  
Ceramic discharge valve

公称口径: DN50~350mm  
公称压力: PN0.6~1.6MPa  
适用介质: 干粉、煤粉及固体颗粒  
适用温度: ≤425°C  
Nominal Diameter: DN50~350mm  
Nominal Pressure: PN0.6~1.6MPa  
Mediums: Dry powder, pulverized coal and solid particles  
Temperature Range: ≤425°C



**Z644TC气动陶瓷双闸板阀**  
Pneumatic ceramic double gate valve

公称口径: DN40~300mm  
公称压力: PN1.0~2.5MPa  
适用介质: 干粉、煤粉及固体颗粒  
适用温度: ≤425°C  
Nominal Diameter: DN50~350mm  
Nominal Pressure: PN0.6~1.6MPa  
Mediums: Dry powder, pulverized coal and solid particles  
Temperature Range: ≤425°C



**DMZ73X手动暗杆刀型闸阀**  
Manual dark bar type knife gate valve

公称口径: DN50~600mm  
公称压力: PN0.6~2.5MPa  
适用介质: 水、纸浆  
适用温度: ≤120°C  
Nominal Diameter: DN50~600mm  
Nominal Pressure: PN0.6~2.5MPa  
Mediums: Water, pulp  
Temperature Range: ≤120°C



**LMD螺旋闸门**  
Spiral gate valve

公称口径: DN40~300mm  
公称压力: PN0.6~1.6MPa  
适用介质: 水、纸浆  
适用温度: ≤120°C  
Nominal Diameter: DN50~2000mm  
Nominal Pressure: PN0.6~2.5MPa  
Mediums: Water, pulp  
Temperature Range: ≤120°C

# Golbe valve

## series 截止阀系列

全方位管道系统阀门集成解决方案  
Comprehensive pipeline system valve integration solution

www.jqfm-valve.com





**J41H中低压截止阀**  
Medium and low pressure globe valve  
公称口径: DN15~600mm  
公称压力: PN1.0~4.0MPa  
适用介质: 水、蒸汽、油品  
适用温度: ≤650℃  
Nominal Diameter: DN15~600mm  
Nominal Pressure: PN1.0~4.0MPa  
Mediums: Water, steam, oil  
Temperature Range: ≤650℃



**J41H/Y高压截止阀**  
High pressure globe valve  
公称口径: DN15~600mm  
公称压力: PN6.4~16.0MPa  
适用介质: 水、蒸汽、油品  
适用温度: ≤650℃  
Nominal Diameter: DN15~600mm  
Nominal Pressure: PN6.4~16.0MPa  
Mediums: Water, steam, oil  
Temperature Range: ≤650℃



**J541W/H/Y伞齿轮截止阀**  
Bevel gear globe valve  
公称口径: DN200~600mm  
公称压力: PN1.0~16.0MPa  
适用介质: 水、蒸汽、油品  
适用温度: ≤650℃  
Nominal Diameter: DN200~600mm  
Nominal Pressure: PN1.0~16.0MPa  
Mediums: Water, steam, oil  
Temperature Range: ≤650℃



**J541H/Y伞齿轮焊接截止阀**  
Bevel gear welding stop valve  
公称口径: DN50~200mm  
公称压力: PN1.6~32.0MPa  
适用介质: 水、蒸汽、油品  
适用温度: ≤650℃  
Nominal Diameter: DN50~200mm  
Nominal Pressure: PN1.6~32.0MPa  
Mediums: Water, steam, oil  
Temperature Range: ≤650℃



**J41W不锈钢截止阀**  
Stainless steel globe valve  
公称口径: DN15~600mm  
公称压力: PN1.0~16.0MPa  
适用介质: 水、蒸汽、油品  
适用温度: ≤650℃  
Nominal Diameter: DN15~600mm  
Nominal Pressure: PN1.0~16.0MPa  
Mediums: Water, steam, oil  
Temperature Range: ≤650℃



**J41H/W美标截止阀**  
API globe valve  
公称口径: 1/2"~20"  
公称压力: 150~1500Lb  
适用介质: 水、蒸汽、油品  
适用温度: ≤650℃  
Nominal Diameter: 1/2"~20"  
Nominal Pressure: 150~1500Lb  
Mediums: Water, steam, oil  
Temperature Range: ≤650℃



**J641H/Y气动截止阀**  
Pneumatic globe valve  
公称口径: DN15~600mm  
公称压力: PN1.0~16.0MPa  
适用介质: 水、蒸汽、油品  
适用温度: ≤650℃  
Nominal Diameter: DN15~600mm  
Nominal Pressure: PN1.0~16.0MPa  
Mediums: Water, steam, oil  
Temperature Range: ≤650℃



**J941H/Y电动截止阀**  
Electric globe valve  
公称口径: DN15~600mm  
公称压力: PN1.0~16.0MPa  
适用介质: 水、蒸汽、油品  
适用温度: ≤650℃  
Nominal Diameter: DN15~600mm  
Nominal Pressure: PN1.0~16.0MPa  
Mediums: Water, steam, oil  
Temperature Range: ≤650℃



**DJ41W低温截止阀**  
Low temperature globe valve  
公称口径: DN15~400mm  
公称压力: PN1.0~4.0MPa  
适用介质: 甲烷、液态天然气等  
适用温度: ≥-196℃  
Nominal Diameter: DN15~400mm  
Nominal Pressure: PN1.0~4.0MPa  
Mediums: Methane, liquid natural gas, etc  
Temperature Range: ≥-196℃



**DJ41W美标低温截止阀**  
API low temperature globe valve  
公称口径: DN15~400mm  
公称压力: PN1.0~4.0MPa  
适用介质: 甲烷、液态天然气等  
适用温度: ≥-196℃  
Nominal Diameter: DN15~400mm  
Nominal Pressure: PN1.0~4.0MPa  
Mediums: Methane, liquid natural gas, etc  
Temperature Range: ≥-196℃



**U41S法兰柱塞截止阀**  
Flange plunger globe valve  
公称口径: DN15~450mm  
公称压力: PN1.0~4.0MPa  
适用介质: 水、蒸汽、油品  
适用温度: ≤250℃  
Nominal Diameter: DN15~450mm  
Nominal Pressure: PN1.0~4.0MPa  
Mediums: Water, steam, oil  
Temperature Range: ≤250℃



**U11SFM内螺纹柱塞阀**  
Internal thread plunger valve  
公称口径: DN15~50mm  
公称压力: PN0.6~2.5MPa  
适用介质: 纸浆、污水、煤浆、泥浆  
适用温度: ≤250℃  
Nominal Diameter: DN15~50mm  
Nominal Pressure: PN0.6~2.5MPa  
Mediums: Pulp, sewage, coal slurry, slurry  
Temperature Range: ≤250℃



**TP41Y阀套式排污阀**  
Valve sleeve type blowdown valve  
公称口径: DN15~300mm  
公称压力: PN1.6~16.0MPa  
适用介质: 水、蒸汽、油品  
适用温度: ≤650℃  
Nominal Diameter: DN15~300mm  
Nominal Pressure: PN1.6~16.0MPa  
Mediums: Water, steam, oil  
Temperature Range: ≤650℃



**FJ41H节流截止放空阀**  
Throttle stop vent valve  
公称口径: DN50~200mm  
公称压力: PN1.6~16.0MPa  
适用介质: 水、蒸汽、油品  
适用温度: ≤650℃  
Nominal Diameter: DN50~200mm  
Nominal Pressure: PN1.6~16.0MPa  
Mediums: Water, steam, oil  
Temperature Range: ≤650℃



**FJ41Y F60材质节流截止放空阀**  
F60 material throttle stop vent valve  
公称口径: DN50~400mm  
公称压力: PN1.0~6.4MPa  
适用介质: 水、蒸汽、油品  
适用温度: ≤650℃  
Nominal Diameter: DN50~400mm  
Nominal Pressure: PN1.0~6.4MPa  
Mediums: Water, steam, oil  
Temperature Range: ≤650℃



**FJ541Y节流截止放空阀**  
Throttle stop vent valve  
公称口径: DN50~400mm  
公称压力: PN1.0~6.4MPa  
适用介质: 水、蒸汽、油品  
适用温度: ≤650℃  
Nominal Diameter: DN50~400mm  
Nominal Pressure: PN1.0~6.4MPa  
Mediums: Water, steam, oil  
Temperature Range: ≤650℃



**J44H角式截止阀**  
Diagonal globe valve

公称口径: DN15~300mm  
公称压力: PN1.6~32.0MPa  
适用介质: 水、蒸汽、油品  
适用温度: ≤650℃  
Nominal Diameter: DN15~300mm  
Nominal Pressure: PN1.6~32.0MPa  
Mediums: Water, steam, oil  
Temperature Range: ≤650℃



**BJ45W直流式保温截止阀**  
Direct current insulated globe valve

公称口径: DN40~300mm  
公称压力: P1.0~10.0MPa  
适用介质: 水、硝酸、尿素  
适用温度: ≤650℃  
Nominal Diameter: DN40~300mm  
Nominal Pressure: P1.0~10.0MPa  
Mediums: Water, nitrate, urea  
Temperature Range: ≤650℃



**HG5-81-2下展式放料阀**  
Downward spreading discharge valve

公称口径: DN50~400mm  
公称压力: PN1.0~6.4MPa  
适用介质: 水、酸类、腐蚀介质、油品  
适用温度: ≤650℃  
Nominal Diameter: DN50~400mm  
Nominal Pressure: PN1.0~6.4MPa  
Mediums: Water, Acids, corrosive medium, oil  
Temperature Range: ≤650℃



**HG5-81-1上展式放料阀**  
Upward spreading discharge valve

公称口径: DN50~400mm  
公称压力: PN1.0~6.4MPa  
适用介质: 水、酸类、腐蚀介质、油品  
适用温度: ≤650℃  
Nominal Diameter: DN50~400mm  
Nominal Pressure: PN1.0~6.4MPa  
Mediums: Water, Acids, corrosive medium, oil  
Temperature Range: ≤650℃



**J61Y德标波纹管截止阀**  
J61Y German standard bellows globe valve

公称口径: DN15~400mm  
公称压力: PN1.6~6.4MPa  
适用介质: 水、蒸汽、油品、汽油、烃类  
适用温度: ≤650℃  
Nominal Diameter: DN15~400mm  
Nominal Pressure: PN1.6~6.4MPa  
Mediums: Water, steam, oil, gasoline, hydrocarbons  
Temperature Range: ≤650℃



**WJ41H德标波纹管截止阀**  
DIN bellows globe valve

公称口径: DN15~400mm  
公称压力: PN1.0~6.4MPa  
适用介质: 水、蒸汽、油品、汽油、烃类  
适用温度: ≤650℃  
Nominal Diameter: DN15~400mm  
Nominal Pressure: PN1.0~6.4MPa  
Mediums: Water, steam, oil, Gasoline, hydrocarbons  
Temperature Range: ≤650℃



**WJ451W/H德标Y型直流式波纹管截止阀**  
German standard Y-type direct current bellows globe valve

公称口径: DN15~400mm  
公称压力: PN1.0~6.4MPa  
适用介质: 水、蒸汽、油品、汽油、烃类  
适用温度: ≤650℃  
Nominal Diameter: DN15~400mm  
Nominal Pressure: PN1.0~6.4MPa  
Mediums: Water, steam, oil, gasoline, hydrocarbons  
Temperature Range: ≤650℃



**J61Y高压电站节流阀**  
High power station throttle

公称口径: DN100~500mm  
公称压力: PN10.0~32.0MPa  
适用介质: 水、蒸汽、油品  
适用温度: ≤650℃  
Nominal Diameter: DN100~500mm  
Nominal Pressure: PN10.0~32.0MPa  
Mediums: Water, steam, oil  
Temperature Range: ≤650℃



**PJ565美标Y型截止阀**  
American Standard Y-type globe valve

公称口径: 4"~16"  
公称压力: 600~3000Lb  
适用介质: 水、蒸汽、油品  
适用温度: ≤650℃  
Nominal Diameter: 4"~16"  
Nominal Pressure: 600~3000Lb  
Mediums: Water, steam, oil  
Temperature Range: ≤650℃



**J961Y美标Y型截止阀**  
American Standard Y-type globe valve

公称口径: 4"~16"  
公称压力: 600~3000Lb  
适用介质: 水、蒸汽、油品  
适用温度: ≤650℃  
Nominal Diameter: 4"~16"  
Nominal Pressure: 600~3000Lb  
Mediums: Water, steam, oil  
Temperature Range: ≤650℃



**J961Y电站截止阀**  
Power station globe valve

公称口径: DN50~600mm  
公称压力: PN1.6~32.0MPa  
适用介质: 水、蒸汽、油品  
适用温度: ≤650℃  
Nominal Diameter: DN50~600mm  
Nominal Pressure: PN1.6~32.0MPa  
Mediums: Water, steam, oil  
Temperature Range: ≤650℃



**J41W水封截止阀**  
Seal valve

公称口径: DN50~200mm  
公称压力: PN2.5~4.0MPa  
适用介质: 水、油品、蒸汽  
适用温度: ≤650℃  
Nominal Diameter: DN50~200mm  
Nominal Pressure: PN2.5~4.0MPa  
Mediums: Water, steam, oil  
Temperature Range: ≤650℃



**PJ541Y电站截止阀**  
Power station globe valve

公称口径: DN15~600mm  
公称压力: PN1.6~32.0MPa  
适用介质: 水、蒸汽、油品  
适用温度: ≤650℃  
Nominal Diameter: DN15~600mm  
Nominal Pressure: PN1.6~32.0MPa  
Mediums: Water, steam, oil  
Temperature Range: ≤650℃



**J41Y电站截止阀**  
Power station globe valve

公称口径: DN50~600mm  
公称压力: PN1.6~10.0MPa  
适用介质: 水、蒸汽、油品  
适用温度: ≤650℃  
Nominal Diameter: DN50~600mm  
Nominal Pressure: PN1.6~10.0MPa  
Mediums: Water, steam, oil  
Temperature Range: ≤650℃



**SJ661Y电站截止阀**  
Power station globe valve

公称口径: DN15~250mm  
公称压力: PN1.0~6.4MPa  
适用介质: 水、蒸汽、油品  
适用温度: ≤650℃  
Nominal Diameter: DN15~250mm  
Nominal Pressure: PN1.0~6.4MPa  
Mediums: Water, steam, oil  
Temperature Range: ≤650℃



**J61Y锻钢截止阀**  
Forged steel globe valve

公称口径: 4"~16"  
公称压力: 600~3000Lb  
适用介质: 水、蒸汽、油品  
适用温度: ≤650℃  
Nominal Diameter: 4"~16"  
Nominal Pressure: 600~3000Lb  
Mediums: Water, steam, oil  
Temperature Range: ≤650℃



**JK41H/Y真空截止阀**  
Vacuum globe valve  
公称口径: DN15~300mm  
公称压力: PN1.6~32.0MPa  
适用介质: 水、蒸汽、油品  
适用温度: ≤425℃  
Nominal Diameter: DN15~300mm  
Nominal Pressure: PN1.6~32.0MPa  
Mediums: Water, steam, oil  
Temperature Range: ≤425℃



**KJ41F抗生素截止阀**  
Antibiotic globe valve  
公称口径: DN50~600mm  
公称压力: PN1.6~10.0MPa  
适用介质: 水、蒸汽、油品  
适用温度: ≤200℃  
Nominal Diameter: DN50~600mm  
Nominal Pressure: PN1.6~10.0MPa  
Mediums: Water, steam, oil  
Temperature Range: ≤200℃



**BJ41W夹套保温截止阀**  
Jacket insulation valve  
公称口径: DN50~200mm  
公称压力: PN1.6~6.4MPa  
适用介质: 水、蒸汽、油品  
适用温度: ≤425℃  
Nominal Diameter: DN50~200mm  
Nominal Pressure: PN1.6~6.4MPa  
Mediums: Water, steam, oil  
Temperature Range: ≤425℃



**J41H活塞截止阀**  
Piston globe valve  
公称口径: DN50~600mm  
公称压力: PN0.6~6.4MPa  
适用介质: 水、蒸汽、油品  
适用温度: ≤350℃  
Nominal Diameter: DN50~600mm  
Nominal Pressure: PN0.6~6.4MPa  
Mediums: Water, steam, oil  
Temperature Range: ≤350℃



**JLH41H多功能截止阀**  
Multifunctional valve  
公称口径: DN50~400mm  
公称压力: PN1.6~4.0MPa  
适用介质: 水、蒸汽、油品  
适用温度: ≤150℃  
Nominal Diameter: DN50~400mm  
Nominal Pressure: PN1.6~4.0MPa  
Mediums: Water, steam, oil  
Temperature Range: ≤150℃



**J41W氧气截止阀**  
Oxygen globe valve  
公称口径: DN32~200mm  
公称压力: PN1.0~6.4MPa  
适用介质: 氧气、氮气  
适用温度: ≤200℃  
Nominal Diameter: DN32~200mm  
Nominal Pressure: PN1.0~6.4MPa  
Mediums: Oxygen, nitrogen  
Temperature Range: ≤200℃



**JY41W不锈钢氧气阀**  
Stainless steel oxygen valve  
公称口径: DN50~600mm  
公称压力: PN0.6~4.0MPa  
适用介质: 氧气、氮气  
适用温度: ≤150℃  
Nominal Diameter: DN50~600mm  
Nominal Pressure: PN0.6~4.0MPa  
Mediums: Oxygen, nitrogen  
Temperature Range: ≤150℃



**LYJ41F氯气专用截止阀**  
Cut-off valve special for chlorine  
公称口径: DN50~300mm  
公称压力: PN1.6~4.0MPa  
适用介质: 氯气、液氯  
适用温度: ≤200℃  
Nominal Diameter: DN50~300mm  
Nominal Pressure: PN1.6~4.0MPa  
Mediums: Chlorine, chlorine  
Temperature Range: ≤200℃

# Check valve

## series 止回阀系列

全方位管道系统阀门集成解决方案  
Comprehensive pipeline system valve integration solution  
www.jqfm-valve.com





**H41H中低压升降式止回阀**  
Medium and low pressure lifting check valve

公称口径: DN15~500mm  
公称压力: PN1.0~16.0MPa  
适用介质: 水、蒸汽、油品  
适用温度: ≤425°C  
Nominal Diameter: DN15~500mm  
Nominal Pressure: PN1.0~16.0MPa  
Mediums: Water, steam, oil  
Temperature Range: ≤425°C



**H44H中低压旋启式止回阀**  
Medium and low pressure swing check valve

公称口径: DN15~600mm  
公称压力: PN1.0~16.0MPa  
适用介质: 水、蒸汽、油品  
适用温度: ≤425°C  
Nominal Diameter: DN15~600mm  
Nominal Pressure: PN1.0~16.0MPa  
Mediums: Water, steam, oil  
Temperature Range: ≤425°C



**H42H立式止回阀**  
GB vertical check valve

公称口径: DN15~500mm  
公称压力: PN1.0~16.0MPa  
适用介质: 水、蒸汽、油品  
适用温度: ≤425°C  
Nominal Diameter: DN15~500mm  
Nominal Pressure: PN1.0~16.0MPa  
Mediums: Water, steam, oil  
Temperature Range: ≤425°C



**H44W/H美标旋启式止回阀**  
API swing check valve

公称口径: 1/2"~20"  
公称压力: 150~1500Lb  
适用介质: 水、蒸汽、油品  
适用温度: ≤425°C  
Nominal Diameter: 1/2"~20"  
Nominal Pressure: 150~1500Lb  
Mediums: Water, steam, oil  
Temperature Range: ≤425°C



**H42H/Y高压止回阀**  
High pressure check valve

公称口径: 6"~24"  
公称压力: 300~1500Lb  
适用介质: 水、蒸汽、油品  
适用温度: ≤600°C  
Nominal Diameter: 6"~24"  
Nominal Pressure: 300~1500Lb  
Mediums: Water, steam, oil  
Temperature Range: ≤600°C



**H71对夹式止回阀**  
Wafer type check valve

公称口径: DN15~600mm  
公称压力: PN1.0~4.0MPa  
适用介质: 水、蒸汽、油品  
适用温度: ≤425°C  
Nominal Diameter: DN15~600mm  
Nominal Pressure: PN1.0~4.0MPa  
Mediums: Water, steam, oil  
Temperature Range: ≤425°C



**H76W对夹式止回阀**  
Wafer check valve

公称口径: DN40~800mm  
公称压力: PN1.0~4.0MPa  
适用介质: 水、蒸汽、油品  
适用温度: ≤425°C  
Nominal Diameter: DN40~800mm  
Nominal Pressure: PN1.0~4.0MPa  
Mediums: Water, steam, oil  
Temperature Range: ≤425°C



**H74对夹式止回阀**  
Wafer check valve

公称口径: DN15~600mm  
公称压力: PN1.0~4.0MPa  
适用介质: 水、蒸汽、油品  
适用温度: ≤425°C  
Nominal Diameter: DN15~600mm  
Nominal Pressure: PN1.0~4.0MPa  
Mediums: Water, steam, oil  
Temperature Range: ≤425°C



**H76H凸耳止回阀**  
Lug check valve

公称口径: DN50~600mm  
公称压力: PN4.0~6.4MPa  
适用介质: 水、蒸汽、油品  
适用温度: ≤425°C  
Nominal Diameter: DN50~600mm  
Nominal Pressure: PN4.0~6.4MPa  
Mediums: Water, steam, oil  
Temperature Range: ≤425°C



**H44Y整体锻止回阀**  
Integral forged check valve

公称口径: DN50~600mm  
公称压力: PN4.0~6.4MPa  
适用介质: 水、蒸汽、油品  
适用温度: ≤425°C  
Nominal Diameter: DN50~600mm  
Nominal Pressure: PN4.0~6.4MPa  
Mediums: Water, steam, oil  
Temperature Range: ≤425°C



**PXH44H斜盘式止回阀**  
Swashplate check valve

公称口径: 2"~36"  
公称压力: 900~2500Lb  
适用介质: 水、蒸汽、油品  
适用温度: ≤425°C  
Nominal Diameter: 2"~36"  
Nominal Pressure: 900~2500Lb  
Mediums: Water, steam, oil  
Temperature Range: ≤425°C



**ZLH41Y轴流式止回阀**  
Axial flow check valve

公称口径: 2"~36"  
公称压力: 900~2500Lb  
适用介质: 水、蒸汽、油品  
适用温度: ≤570°C  
Nominal Diameter: 2"~36"  
Nominal Pressure: 900~2500Lb  
Mediums: Water, steam, oil  
Temperature Range: ≤570°C



**H61Y止回阀**  
Check valve

公称口径: DN50~600mm  
公称压力: PN1.6~10.0MPa  
适用介质: 水、蒸汽、油品  
适用温度: ≤425°C  
Nominal Diameter: DN50~600mm  
Nominal Pressure: PN1.6~10.0MPa  
Mediums: Water, steam, oil  
Temperature Range: ≤425°C



**H76Y超大口径止回阀**  
Super large diameter check valve

公称口径: DN350~2500mm  
公称压力: PN1.6~10.0MPa  
适用介质: 水、蒸汽、气体、石油  
适用温度: ≤575°C  
Nominal diameter: DN350~2500mm  
Nominal Pressure: PN1.6~10.0MPa  
Mediums: Water, steam, gas, oil  
Applicable temperature: ≤575°C



**H42H美标立式止回阀**  
American standard vertical check valve

公称口径: 1/2"~12"  
公称压力: 150~900Lb  
适用介质: 水、蒸汽、油品  
适用温度: ≤425°C  
Nominal Diameter: 1/2"~12"  
Nominal Pressure: 150~900Lb  
Mediums: Water, steam, oil  
Temperature Range: ≤425°C



**H72H对夹式高压止回阀**  
Wafer high check valve

公称口径: DN50~100mm  
公称压力: PN10~32MPa  
适用介质: 水、蒸汽、油品  
适用温度: ≤425°C  
Nominal Diameter: DN50~100mm  
Nominal Pressure: PN10~32MPa  
Mediums: Water, steam, oil  
Temperature Range: ≤425°C



**PH64Y 电站止回阀**  
Station check valve

公称口径: DN1/2" ~ 16"  
公称压力: PN125 ~ 3500Lb  
适用介质: 水、蒸汽、油品  
适用温度: ≤650°C  
Nominal diameter: DN1/2" ~ 16"  
Nominal Pressure: PN125 ~ 3500Lb  
Mediums: Water, steam, oil  
Applicable temperature: ≤650°C



**H62H 焊接止回阀**  
Welded check valve

公称口径: 2" ~ 36"  
公称压力: 900 ~ 2500Lb  
适用介质: 水、蒸汽、油品  
适用温度: ≤650°C  
Nominal Diameter: 2" ~ 36"  
Nominal Pressure: 900 ~ 2500Lb  
Mediums: Water, steam, oil  
Temperature Range: ≤650°C



**ARC1000 最小流量阀**  
Minimum flow valve

公称口径: DN40 ~ 300mm  
公称压力: PN1.0 ~ 32.0MPa  
适用介质: 水、蒸汽、油品  
适用温度: ≤650°C  
Nominal Diameter: DN40 ~ 300mm  
Nominal Pressure: PN1.0 ~ 32.0MPa  
Mediums: Water, steam, oil  
Temperature Range: ≤650°C



**ARC2000 自控回流阀**  
Automatic control return valve

公称口径: DN100 ~ 1000mm  
公称压力: PN1.0 ~ 4.0MPa  
适用介质: 水、蒸汽、油品  
适用温度: ≤650°C  
Nominal Diameter: DN100 ~ 1000mm  
Nominal Pressure: PN1.0 ~ 4.0MPa  
Mediums: Water, steam, oil  
Temperature Range: ≤650°C



**H64H/Y 自密封旋启式止回阀**  
Self sealing swing check valve

公称口径: 2" ~ 36"  
公称压力: 900 ~ 2500Lb  
适用介质: 水、蒸汽、油品  
适用温度: ≤650°C  
Nominal Diameter: 2" ~ 36"  
Nominal Pressure: 900 ~ 2500Lb  
Mediums: Water, steam, oil  
Temperature Range: ≤650°C



**H61Y 电站止回阀**  
Station check valve

公称口径: DN10 ~ 600mm  
公称压力: PN6.4 ~ 32.0MPa  
适用介质: 水、蒸汽、油品  
适用温度: ≤650°C  
Nominal Diameter: DN10 ~ 600mm  
Nominal Pressure: PN6.4 ~ 32.0MPa  
Mediums: Water, steam, oil  
Temperature Range: ≤650°C



**HY41W 氧气止回阀**  
Discharge check valve

公称口径: DN50 ~ 200mm  
公称压力: PN1.0 ~ 2.5MPa  
适用介质: 氧气、氮气  
适用温度: ≤150°C  
Nominal Diameter: DN50 ~ 200mm  
Nominal Pressure: PN1.0 ~ 2.5MPa  
Mediums: Oxygen, nitrogen  
Temperature Range: ≤150°C



**H42TC 耐磨陶瓷排渣止回阀**  
Wear ceramics slugging check valve

公称口径: DN40 ~ 800mm  
公称压力: PN0.6 ~ 32MPa  
适用介质: 干灰、粉、煤灰及固体颗粒  
适用温度: -40°C ~ 350°C  
Nominal diameter: DN40 ~ 800mm  
Nominal Pressure: PN0.6 ~ 32MPa  
Mediums: Dry ash, fly ash and solid particles  
Applicable temperature: -40°C ~ 350°C



**H664Y 抽气止回阀**  
Exhaust check valve

公称口径: DN50 ~ 1000mm  
公称压力: PN1.6 ~ 10.0MPa  
适用介质: 水、蒸汽、油品  
适用温度: ≤650°C  
Nominal Diameter: DN50 ~ 1000mm  
Nominal Pressure: PN1.6 ~ 10.0MPa  
Mediums: Water, steam, oil  
Temperature Range: ≤650°C



**SY61Y 高温高压锻钢水压试验阀**  
High temperature and high pressure forged steel pressure test valve

公称口径: DN350 ~ 850mm  
公称压力: PN4.0 ~ 6.4MPa  
适用介质: 水、蒸汽、气体、石油  
适用温度: ≤650°C  
Nominal diameter: DN350 ~ 850mm  
Nominal Pressure: PN4.0 ~ 6.4MPa  
Mediums: Water, steam, gas, oil  
Applicable temperature: ≤650°C



**H48H 空排止回阀**  
Air check valve

公称口径: DN125 ~ 175mm  
公称压力: PN20.0MPa  
适用介质: 水、蒸汽  
适用温度: ≤650°C  
Nominal diameter: DN125 ~ 175mm  
Nominal Pressure: PN20.0MPa  
Mediums: Water, steam  
Applicable temperature: ≤650°C



**PH44Y 排渣止回阀**  
Discharge check valve

公称口径: DN50 ~ 600mm  
公称压力: PN1.6 ~ 6.4MPa  
适用介质: 水、蒸汽  
适用温度: ≤650°C  
Nominal diameter: DN50 ~ 600mm  
Nominal Pressure: PN1.6 ~ 6.4MPa  
Mediums: Water, steam  
Applicable temperature: ≤650°C



**H41H 德标升降式止回阀**  
DIN lift check valve

公称口径: DN1/2" ~ 16"  
公称压力: PN125 ~ 3500Lb  
适用介质: 水、蒸汽、油品  
适用温度: ≤650°C  
Nominal diameter: DN1/2" ~ 16"  
Nominal Pressure: PN125 ~ 3500Lb  
Mediums: Water, steam, oil  
Applicable temperature: ≤650°C



**H44H 德标旋启式止回阀**  
German standard swing check valve

公称口径: DN15 ~ 400mm  
公称压力: PN125 ~ 3500Lb  
适用介质: 水、蒸汽、油品  
适用温度: ≤650°C  
Nominal Diameter: DN15 ~ 400mm  
Nominal Pressure: PN125 ~ 3500Lb  
Mediums: Water, steam, oil  
Temperature Range: ≤650°C



**BH44H 保温止回阀**  
Insulation check valve

公称口径: DN50 ~ 300mm  
公称压力: PN1.6 ~ 16.0MPa  
适用介质: 水、蒸汽、油品  
适用温度: ≤650°C  
Nominal Diameter: DN50 ~ 300mm  
Nominal Pressure: PN1.6 ~ 16.0MPa  
Mediums: Water, steam, oil  
Temperature Range: ≤650°C



**H42W 底阀**  
Bottom valve

公称口径: DN50 ~ 800mm  
公称压力: PN1.0MPa  
适用介质: 水、河水、油品  
适用温度: ≤120°C  
Nominal Diameter: DN50 ~ 800mm  
Nominal Pressure: PN1.0MPa  
Mediums: Water, river water, oil  
Temperature Range: ≤120°C

# Ball valve

## series 球阀系列

全方位管道系统阀门集成解决方案  
Comprehensive pipeline system valve integration solution

www.jqfm-valve.com



## 球阀系列 Ball valve series

全方位管道系统阀门集成解决方案  
Comprehensive pipeline system valve integration solution



### Q41F中低压球阀 Medium and low pressure ball valve

公称口径: DN15~200mm  
公称压力: PN1.0~6.4MPa  
适用介质: 水、蒸汽、油品  
适用温度: ≤150°C  
Nominal Diameter: DN15~200mm  
Nominal Pressure: PN1.0~6.4MPa  
Mediums: Water, steam, oil  
Temperature Range: ≤150°C



### Q41F不锈钢球阀 Stainless steel ball valve

公称口径: DN15~DN250mm  
公称压力: PN1.6~4.0MPa  
适用介质: 水、气、油品等  
适用温度: ≤150°C  
Nominal Diameter: DN15~DN250mm  
Nominal Pressure: PN1.6~4.0MPa  
Mediums: Water, gas and oil etc.  
Temperature Range: ≤150°C



### Q41F美标浮动球阀 API Floating Ball Valve

公称口径: 1/2"~14"  
公称压力: 150~1000Lb  
适用介质: 水、硝酸、醋酸类  
适用温度: ≤150°C  
Nominal Diameter: 1/2"~14"  
Nominal Pressure: 150~1000Lb  
Mediums: Water, nitric acid, acetic acid  
Temperature Range: ≤150°C



### Q41F高平台球阀 High platform ball valve

公称口径: DN50~200mm  
公称压力: PN1.0~6.4MPa  
适用介质: 水、蒸汽、油品、酸类  
适用温度: ≤150°C  
Nominal Diameter: DN50~200mm  
Nominal Pressure: PN1.0~6.4MPa  
Mediums: Water, steam, oil, acid  
Temperature Range: ≤150°C



### Q41F日标浮动球阀 JIS Floating Ball Valve

公称口径: 1/2"~10"  
公称压力: PN150~600Lb  
适用介质: 水、蒸汽、油品、酸类  
适用温度: ≤150°C  
Nominal diameter: DN1/2"~10"  
Nominal Pressure: PN150~600Lb  
Mediums: Water, steam, oil, acid  
Applicable temperature: ≤150°C



### Q347F/H蜗轮固定球阀 Worm gear fixed ball valve

公称口径: DN50~700mm  
公称压力: PN1.0~6.4MPa  
适用介质: 水、蒸汽、油品  
适用温度: ≤650°C  
Nominal Diameter: DN50~700mm  
Nominal Pressure: PN1.0~6.4MPa  
Mediums: Water, steam, oil  
Temperature Range: ≤650°C



### Q347F/H美标固定球阀 API Fixed Ball Valve

公称口径: 2"~20"  
公称压力: 150~900Lb  
适用介质: 水、蒸汽、油品  
适用温度: ≤650°C  
Nominal Diameter: 2"~20"  
Nominal Pressure: 150~900Lb  
Mediums: Water, steam, oil  
Temperature Range: ≤650°C



### Q47H锻钢球阀 Forged steel ball valve

公称口径: DN50~600mm  
公称压力: PN10.0~32.0MPa  
适用介质: 水、蒸汽、油品  
适用温度: ≤650°C  
Nominal Diameter: DN50~600mm  
Nominal Pressure: PN10.0~32.0MPa  
Mediums: Water, steam, oil  
Temperature Range: ≤650°C



**Q47H美标锻钢球阀**  
American standard forged steel ball valve  
公称口径: 12"~36"  
公称压力: 600~1500Lb  
适用介质: 水、蒸汽、油品  
适用温度: ≤650℃  
Nominal Diameter: 12"~36"  
Nominal Pressure: 600~1500Lb  
Mediums: Water, steam, oil  
Temperature Range: ≤650℃



**Q41F锻钢球阀**  
Forged steel ball valve  
公称口径: DN15~200mm  
公称压力: PN1.0~6.4MPa  
适用介质: 水、蒸汽、油品  
适用温度: ≤150℃  
Nominal Diameter: DN15~200mm  
Nominal Pressure: PN1.0~6.4MPa  
Mediums: Water, steam, oil  
Temperature Range: ≤150℃



**Q41Y/Q47H硬密封球阀**  
Hard seal ball valve  
公称口径: 3"~24"  
公称压力: 150~1500Lb  
适用介质: 水、蒸汽、油品  
适用温度: ≤650℃  
Nominal Diameter: 3"~24"  
Nominal Pressure: 150~1500Lb  
Mediums: Water, steam, oil  
Temperature Range: ≤650℃



**Q71F高压对焊球阀**  
High pressure butt welding ball valve  
公称口径: DN10~100mm  
公称压力: PN16.0~32.0MPa  
适用介质: 水、蒸汽、油品  
适用温度: ≤150℃  
Nominal Diameter: DN10~100mm  
Nominal Pressure: PN16.0~32.0MPa  
Mediums: Water, steam, oil  
Temperature Range: ≤150℃



**Q41N/H/Y高压锻钢浮动球阀**  
High pressure forged steel floating ball valve  
公称口径: DN15~400mm  
公称压力: PN1.0~2.5MPa  
适用介质: 水、蒸汽、油品  
适用温度: ≤650℃  
Nominal Diameter: DN15~400mm  
Nominal Pressure: PN1.0~2.5MPa  
Mediums: Water, steam, oil  
Temperature Range: ≤650℃



**Q44F三通球阀**  
The 3-way ball valve  
公称口径: DN15~400mm  
公称压力: PN1.0~2.5MPa  
适用介质: 水、蒸汽、油品  
适用温度: ≤150℃  
Nominal Diameter: DN15~400mm  
Nominal Pressure: PN1.0~2.5MPa  
Mediums: Water, steam, oil  
Temperature Range: ≤150℃



**Q45F一体式三通球阀**  
Integrated three-way ball valve  
公称口径: DN50~300mm  
公称压力: PN1.6~4.0MPa  
适用介质: 水、蒸汽、油品、酸类  
适用温度: ≤150℃  
Nominal diameter: DN50~300mm  
Nominal Pressure: PN1.6~4.0MPa  
Mediums: Water, steam, oil  
Applicable temperature: ≤150℃



**Q46F四通球阀**  
Four way ball valve  
公称口径: DN50~300mm  
公称压力: PN1.6~4.0MPa  
适用介质: 水、蒸汽、油品、酸类  
适用温度: ≤150℃  
Nominal diameter: DN50~300mm  
Nominal Pressure: PN1.6~4.0MPa  
Mediums: Water, steam, oil  
Applicable temperature: ≤150℃



**PQ347F/H偏心半球阀**  
Eccentric hemispherical valve  
公称口径: DN40~2000mm  
公称压力: PN1.0~4.0MPa  
适用介质: 水、泥浆、油品  
适用温度: ≤650℃  
Nominal Diameter: DN40~2000mm  
Nominal Pressure: PN1.0~4.0MPa  
Mediums: Water, mud, oil  
Temperature Range: ≤650℃



**PQ340F/H偏心半球阀**  
Eccentric hemisphere valve  
公称口径: DN40~2000mm  
公称压力: PN1.0~4.0MPa  
适用介质: 水、泥浆、油品  
适用温度: ≤650℃  
Nominal Diameter: DN40~2000mm  
Nominal Pressure: PN1.0~4.0MPa  
Mediums: Water, mud, oil  
Temperature Range: ≤650℃



**SQ340H上装式球阀**  
Jacket type ball valve  
公称口径: DN40~2000mm  
公称压力: PN1.6~10.0MPa  
适用介质: 水、泥浆、油品  
适用温度: ≤650℃  
Nominal Diameter: DN40~2000mm  
Nominal Pressure: PN1.6~10.0MPa  
Mediums: Water, mud, oil  
Temperature Range: ≤650℃



**Q647F/H气动偏心半球阀**  
Pneumatic eccentric hemispherical valve  
公称口径: DN40~2000mm  
公称压力: PN0.6~6.4MPa  
适用介质: 水、泥浆、油品  
适用温度: ≤650℃  
Nominal Diameter: DN40~2000mm  
Nominal Pressure: PN0.6~6.4MPa  
Mediums: Water, mud, oil  
Temperature Range: ≤650℃



**Q947F/H电动偏心半球阀**  
Electric eccentric hemispherical valve  
公称口径: DN40~2000mm  
公称压力: PN1.6~10.0MPa  
适用介质: 水、蒸汽、油品  
适用温度: ≤650℃  
Nominal Diameter: DN40~2000mm  
Nominal Pressure: PN1.6~10.0MPa  
Mediums: Water, steam, oil  
Temperature Range: ≤650℃



**DBB双堵塞双排放球阀**  
Double plug double discharge ball valve  
公称口径: 10"~24"  
公称压力: 300~1500Lb  
适用介质: 水煤化合物、油品  
适用温度: ≤425℃  
Nominal Diameter: 10"~24"  
Nominal Pressure: 300~1500Lb  
Mediums: Water coal compound, oil  
Temperature Range: ≤425℃



**Q47F/H轨道球阀**  
Track ball valve  
公称口径: DN50~700mm  
公称压力: PN1.0~4.0MPa  
适用介质: 水、蒸汽、油品  
适用温度: ≤250℃  
Nominal Diameter: DN50~700mm  
Nominal Pressure: PN1.0~4.0MPa  
Mediums: Water, steam, oil  
Temperature Range: ≤250℃



**YJZQ液压力球阀**  
Hydraulic ball valve  
公称口径: DN6~50mm  
公称压力: PN16.0~42.0MPa  
适用介质: 液压、油、水、乙二醇  
适用温度: ≤80℃  
Nominal Diameter: DN6~50mm  
Nominal Pressure: PN16.0~42.0MPa  
Mediums: Hydraulic, oil, water, glycol  
Temperature Range: ≤80℃



**Q71F不锈钢薄型球阀**  
Thin stainless steel ball valve

公称口径: DN15 ~ 150mm  
公称压力: PN1.0~4.0MPa  
适用介质: 水、蒸气、油品  
适用温度: ≤250℃  
Nominal Diameter: DN15 ~ 150mm  
Nominal Pressure: PN1.0~4.0MPa  
Mediums: Water, steam, oil  
Temperature Range: ≤250℃



**Q41F三片式法兰球阀**  
Three piece flange ball valve

公称口径: DN15 ~ 100mm  
公称压力: PN0.6 ~ 6.4MPa  
适用介质: 水、蒸气、油品  
适用温度: ≤250℃  
Nominal Diameter: DN15 ~ 100mm  
Nominal Pressure: PN0.6 ~ 6.4MPa  
Mediums: Water, steam, oil  
Temperature Range: ≤250℃



**Q14F广式法兰球阀**  
Wide flange ball valve

公称口径: DN15 ~ 100mm  
公称压力: PN0.6 ~ 4.0MPa  
适用介质: 蒸汽、气体、液体、油品  
适用温度: ≤250℃  
Nominal Diameter: DN15 ~ 100mm  
Nominal Pressure: PN0.6 ~ 4.0MPa  
Mediums: Steam, gas, liquid, oil, etc.  
Temperature Range: ≤250℃



**Q347H煤化工专用耐磨球阀**  
Wear resistant ball valve for coal chemical industry

公称口径: 10"~24"  
公称压力: 300~1500Lb  
适用介质: 水煤化合物、油品  
适用温度: ≤425℃  
Nominal Diameter: 10"~24"  
Nominal Pressure: 300~1500Lb  
Mediums: Water coal compound, oil  
Temperature Range: ≤425℃



**QJ41M一体式球阀**  
One type ball

公称口径: DN15~100mm  
公称压力: PN1.0~4.0MPa  
适用介质: 水、蒸气、油品  
适用温度: ≤250℃  
Nominal Diameter: DN15~100mm  
Nominal Pressure: PN1.0~4.0MPa  
Mediums: Water, steam, oil  
Temperature Range: ≤250℃



**Q41F一体式球阀**  
Integrated ball valve

公称口径: DN15 ~ 300mm  
公称压力: PN 1.6 ~ 16.0MPa  
适用介质: 水、蒸气、油品  
适用温度: ≤250℃  
Nominal Diameter: DN15 ~ 300mm  
Nominal Pressure: PN 1.6 ~ 16.0MPa  
Mediums: Water, steam, oil  
Temperature Range: ≤250℃



**FQ41F放料球阀**  
Discharge Ball Valve

公称口径: DN15 ~ 100mm  
公称压力: PN1.0 ~ 4.0MPa  
适用介质: 水、蒸气、油品  
适用温度: ≤425℃  
Nominal Diameter: DN15~100mm  
Nominal Pressure: PN1.0 ~ 4.0MPa  
Mediums: Water, steam, oil  
Temperature Range: ≤425℃



**FQ41F不锈钢放料球阀**  
Stainless steel discharge ball valve

公称口径: DN50~250mm  
公称压力: PN1.0~6.4MPa  
适用介质: 水、蒸气、油品  
适用温度: ≤150℃  
Nominal Diameter: DN50~250mm  
Nominal Pressure: PN1.0~6.4MPa  
Mediums: Water, steam, oil  
Temperature Range: ≤150℃



**PVC347F清管阀**  
Pigging valve

公称口径: DN100 ~ 250mm  
公称压力: PN 1.6 ~ 10MPa  
适用介质: 石油、天然气  
适用温度: ≤425℃  
Nominal Diameter: DN100 ~ 250mm  
Nominal Pressure: PN 1.6 ~ 10MPa  
Mediums: Oil, gas  
Temperature Range: ≤425℃



**CQA槽车球阀**  
Explosion-proof Pneumatic Ball Valve

公称口径: DN25 ~ 80mm  
公称压力: PN1.0 ~ 2.5MPa  
适用介质: 石油、天然气、液氨  
适用温度: ≤80℃  
Nominal Diameter: DN25 ~ 80mm  
Nominal Pressure: PN1.0 ~ 2.5MPa  
Mediums: Oil, natural gas, liquid ammonia  
Temperature Range: ≤80℃



**Q347Y斜面球阀**  
Inclined ball valve

公称口径: DN50~300mm  
公称压力: PN1.0~6.4MPa  
适用介质: 水、蒸气、油品  
适用温度: ≤425℃  
Nominal diameter: DN50~300mm  
Nominal Pressure: PN1.6~6.4MPa  
Mediums: Water, steam, oil  
Applicable temperature ≤425℃



**HQ747F水电进水球阀**  
Water inlet valve

公称口径: DN50 ~ 300mm  
公称压力: PN1.0 ~ 4.0MPa  
适用介质: 水、蒸气、油品  
适用温度: ≤150℃  
Nominal Diameter: DN50 ~ 300mm  
Nominal Pressure: PN1.0 ~ 4.0MPa  
Mediums: Water, steam, oil  
Temperature Range: ≤150℃



**Q347Y高压球阀**  
High pressure ball valve

公称口径: 2"~16"  
公称压力: 50~3000Lb  
适用介质: 水、蒸气、油品  
适用温度: ≤425℃  
Nominal Diameter: 2"~16"  
Nominal Pressure: 50~3000Lb  
Mediums: Water, steam, oil  
Temperature Range: ≤350℃



**Q41F美标低温球阀**  
American standard low temperature ball valve

公称口径: 2"~16"  
公称压力: 50~600Lb  
适用介质: 水、蒸气、油品  
适用温度: ≥-196℃  
Nominal Diameter: 2"~16"  
Nominal Pressure: 50~600Lb  
Mediums: Water, steam, oil  
Temperature Range: ≥-196℃



**Q41F/H氧气球阀**  
Oxygen ball valve

公称口径: DN50 ~ 200mm  
公称压力: PN1.0 ~ 4.0MPa  
适用介质: 水、氧气  
适用温度: ≤150℃  
Nominal Diameter: DN50 ~ 200mm  
Nominal Pressure: PN1.0 ~ 4.0MPa  
Mediums: Water, oxygen  
Temperature Range: ≤150℃



**Q347F燃气球阀**  
Gas ball valve

公称口径: 2"~20"  
公称压力: 50~900Lb  
适用介质: 液化气、天然气等  
适用温度: ≤150℃  
Nominal Diameter: 2"~20"  
Nominal Pressure: 50~900Lb  
Mediums: Liquefied gas, natural gas, etc.  
Temperature Range: ≤150℃



**BQ641Y 沥青球阀**  
Asphalt Valve

公称口径: DN50~300mm  
公称压力: PN0.6~6.4MPa  
适用介质: 沥青、油品  
适用温度: ≤425℃  
Nominal Diameter: DN50~300mm  
Nominal Pressure: PN0.6~6.4MPa  
Mediums: Asphalt, oil  
Temperature Range: ≤425℃



**Q41F 全塑法兰球阀**  
Full plastic flange ball valve

公称口径: DN40~300mm  
公称压力: PN1.6~2.5MPa  
适用介质: 水、油品、酸、碱类  
适用温度: ≤100℃  
Nominal Diameter: DN40~300mm  
Nominal Pressure: PN1.6~2.5MPa  
Mediums: Steam, gas, liquid, oil, etc.  
Temperature Range: ≤100℃



**Q367F 蜗轮全焊接球阀**  
Worm gear all welded ball valve

公称口径: DN150~1400mm  
公称压力: PN1.0~2.5MPa  
适用介质: 水、气、油品、天然气  
适用温度: ≤150℃  
Nominal Diameter: DN150~1400mm  
Nominal Pressure: PN1.0~2.5MPa  
Mediums: Water, gas, oil, natural gas  
Temperature Range: ≤150℃



**MQ61F 缩径排气埋地式球阀(长体型)**  
Shrink diameter exhaust buried ball valve (long body)

公称口径: DN15~50mm  
公称压力: PN1.0~2.5MPa  
适用介质: 水、气、油品、天然气  
适用温度: ≤150℃  
Nominal Diameter: DN15~50mm  
Nominal Pressure: PN1.0~2.5MPa  
Mediums: Water, gas, oil, natural gas  
Temperature Range: ≤150℃



**Q41TF 耐磨陶瓷球阀**  
Wear resistant ceramic ball valve

公称口径: DN15~300mm  
公称压力: PN1.6~4.0MPa  
适用介质: 水、工业废料、油品  
适用温度: ≤425℃  
Nominal Diameter: DN15~300mm  
Nominal Pressure: PN1.6~4.0MPa  
Mediums: Water, industrial waste, oil  
Temperature Range: ≤425℃



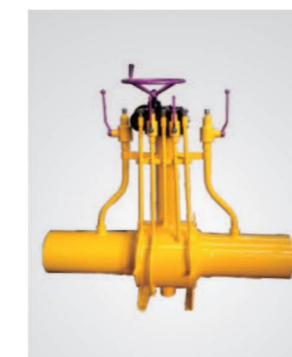
**NQ347TC 耐磨球阀**  
Wear resistant ball valve

公称口径: DN50~700mm  
公称压力: PN1.0~4.0MPa  
适用介质: 水、工业废料、油品  
适用温度: ≤425℃  
Nominal Diameter: DN50~700mm  
Nominal Pressure: PN1.0~4.0MPa  
Mediums: Water, industrial waste, oil  
Temperature Range: ≤425℃



**Q961F 全焊接球阀**  
Full welded ball valve

公称口径: DN15~1200mm  
公称压力: PN1.0~2.5MPa  
适用介质: 水、蒸汽、油品  
适用温度: ≤150℃  
Nominal Diameter: DN15~1200mm  
Nominal Pressure: PN1.0~2.5MPa  
Mediums: Water, steam, oil  
Temperature Range: ≤150℃



**FQ361F 埋地式全焊接球阀**  
Buried all welded ball valve

公称口径: DN50~1200mm  
公称压力: PN1.6~4.0MPa  
适用介质: 水、蒸汽、油品  
适用温度: ≤150℃  
Nominal Diameter: DN50~1200mm  
Nominal Pressure: PN1.6~4.0MPa  
Mediums: Water, steam, oil  
Temperature Range: ≤150℃



**Q61F 埋地式热力球阀(短体型)**  
Buried type heat ball valve (short form)

公称口径: DN15~300mm  
公称压力: PN1.0~2.5MPa  
适用介质: 水、气、油品、天然气  
适用温度: ≤150℃  
Nominal Diameter: DN15~300mm  
Nominal Pressure: PN1.0~2.5MPa  
Mediums: Water, gas, oil, natural gas  
Temperature Range: ≤150℃



**Q61F 供热专用焊接球阀**  
Heating special welding ball valve

公称口径: DN15~300mm  
公称压力: PN1.0~2.5MPa  
适用介质: 水、气、油品、天然气  
适用温度: ≤150℃  
Nominal Diameter: DN15~300mm  
Nominal Pressure: PN1.0~2.5MPa  
Mediums: Water, gas, oil, natural gas  
Temperature Range: ≤150℃



**全焊接球阀**  
Full welded ball valve

公称口径: DN40~500mm  
公称压力: PN1.6~32.0MPa  
适用介质: 水、蒸汽、油品  
适用温度: ≤425℃  
Nominal Diameter: DN40~500mm  
Nominal Pressure: PN1.0~4.0MPa  
Mediums: Water, steam, oil  
Temperature Range: ≤425℃



**Q961F 全焊接球阀**  
Full Welded Ball Valve

公称口径: DN50~1200mm  
公称压力: PN150~1500Lb  
适用介质: 水、蒸汽、油品  
适用温度: ≤150℃  
Nominal Diameter: DN50~1200mm  
Nominal Pressure: PN150~1500Lb  
Mediums: Water, steam, oil  
Temperature Range: ≤150℃



**Q61F 法兰焊接球阀**  
Flange welded ball valve

公称口径: DN15~300mm  
公称压力: PN1.6~2.5MPa  
适用介质: 水、气、油品、天然气  
适用温度: ≤150℃  
Nominal Diameter: DN15~300mm  
Nominal Pressure: PN1.6~2.5MPa  
Mediums: Water, gas, oil, natural gas  
Temperature Range: ≤150℃



**Q341F 法兰蜗轮传动式焊接球阀**  
Flange worm gear drive welding ball valve

公称口径: DN100~600mm  
公称压力: PN1.6~2.5MPa  
适用介质: 水、气、油品、天然气  
适用温度: ≤150℃  
Nominal Diameter: DN100~600mm  
Nominal Pressure: PN1.6~2.5MPa  
Mediums: Water, gas, oil, natural gas  
Temperature Range: ≤150℃



**Q61F 全焊接过滤球阀**  
All welded filter ball valve

公称口径: DN40~200mm  
公称压力: PN1.0~4.0MPa  
适用介质: 液化气、天然气等  
适用温度: ≤150℃  
Nominal Diameter: DN40~200mm  
Nominal Pressure: PN1.0~4.0MPa  
Mediums: Liquefied gas, natural gas, etc.  
Temperature Range: ≤150℃



**PQ94F/Y/H 放散发直埋式球阀**  
Direct buried ball valve

公称口径: DN40~800mm  
公称压力: PN1.0~4.0MPa  
适用介质: 液化气、天然气等  
适用温度: ≤425℃  
Nominal Diameter: DN40~800mm  
Nominal Pressure: PN1.0~4.0MPa  
Mediums: Liquefied gas, natural gas, etc.  
Temperature Range: ≤425℃



**MQ361F埋地式全焊接球阀**  
Buried all welded ball valve

公称口径: DN15~1200mm  
公称压力: PN1.6~6.4MPa  
适用介质: 液化气、天然气等  
适用温度: ≤150℃  
Nominal Diameter: DN15~1200mm  
Nominal Pressure: PN1.6~6.4MPa  
Mediums: Liquefied gas, natural gas, etc.  
Temperature Range: ≤150℃



**Q361F全焊接球阀**  
All welded ball valve

公称口径: DN50~400mm  
公称压力: PN1.6~10.0MPa  
适用介质: 液化气、天然气等  
适用温度: ≤150℃  
Nominal Diameter: DN50~400mm  
Nominal Pressure: PN1.6~10.0MPa  
Mediums: Liquefied gas, natural gas, etc.  
Temperature Range: ≤150℃



**V型球阀**  
V ball valve

公称口径: DN25~500mm  
公称压力: PN1.6~6.4MPa  
适用介质: 水、蒸汽、油品  
适用温度: ≤425℃  
Nominal Diameter: DN25~500mm  
Nominal Pressure: PN1.6~6.4MPa  
Mediums: Water, steam, oil  
Temperature Range: ≤425℃



**XQ(3)47Y偏心旋球阀**  
Eccentric rotary ball valve

公称口径: DN50~600mm  
公称压力: PN1.6~2.5MPa  
适用介质: 水、蒸汽、油品  
适用温度: ≤650℃  
Nominal Diameter: DN50~600mm  
Nominal Pressure: PN1.6~2.5MPa  
Mediums: Water, steam, oil  
Temperature Range: ≤650℃



**BQ71F夹套保温对夹式球阀**  
Jacketed insulation wafer type ball valve

公称口径: DN50~250mm  
公称压力: PN1.0~4.0MPa  
适用介质: 水、蒸汽、油品  
适用温度: ≤150℃  
Nominal Diameter: DN50~250mm  
Nominal Pressure: PN1.0~4.0MPa  
Mediums: Water, steam, oil  
Temperature Range: ≤150℃



**BQ41F夹套保温球阀**  
Jacketed insulation ball valve

公称口径: DN50~250mm  
公称压力: PN1.0~4.0MPa  
适用介质: 水、蒸汽、油品  
适用温度: ≤150℃  
Nominal Diameter: DN50~250mm  
Nominal Pressure: PN1.0~4.0MPa  
Mediums: Water, steam, oil  
Temperature Range: ≤150℃



**FDQ41F防盗球阀**  
Security Ball Valve

公称口径: DN80~300mm  
公称压力: PN1.6~10MPa  
适用介质: 水、蒸汽、油品  
适用温度: ≤150℃  
Nominal Diameter: DN80~300mm  
Nominal Pressure: PN1.6~10.0MPa  
Mediums: Water, steam, oil  
Temperature Range: ≤150℃



**Q641F气动浮动球阀**  
Pneumatic floating ball valve

公称口径: DN50~250mm  
公称压力: PN0.6~1.6MPa  
适用介质: 水、蒸汽、油品  
适用温度: ≤150℃  
Nominal Diameter: DN50~250mm  
Nominal Pressure: PN0.6~1.6MPa  
Mediums: Water, steam, oil  
Temperature Range: ≤150℃



**Q671F气动固定球阀**  
Pneumatic fixed ball valve

公称口径: DN15~300mm  
公称压力: PN0.6~6.4MPa  
适用介质: 蒸汽、气体、液体、油品  
适用温度: ≤150℃  
Nominal Diameter: DN15~300mm  
Nominal Pressure: PN0.6~6.4MPa  
Mediums: Steam, gas, liquid, oil  
Temperature Range: ≤150℃



**Q647MF卸灰球阀**  
Ash discharge ball valve

公称口径: DN50~800mm  
公称压力: PN0.6~2.5MPa  
适用介质: 水、蒸汽、油品  
适用温度: ≤425℃  
Nominal Diameter: DN50~800mm  
Nominal Pressure: PN0.6~2.5MPa  
Mediums: Water, steam, oil  
Temperature Range: ≤425℃



**UPVC气动塑料球阀**  
UPVC pneumatic plastic ball valve

公称口径: DN25~100mm  
公称压力: PN1.0MPa  
适用介质: PVC的兼容食品工业化学溶剂  
适用温度: ≤60℃  
Nominal Diameter: DN25~100mm  
Nominal Pressure: PN1.0MPa  
Mediums: PVC is compatible with chemical solvents for food industry  
Temperature Range: ≤60℃



**Q644F气动法兰三通球阀**  
Pneumatic flanged three-way ball valve

公称口径: DN15~100mm  
公称压力: PN0.6~6.4MPa  
适用介质: 蒸汽、气体、液体、油品  
适用温度: ≤650℃  
Nominal Diameter: DN15~100mm  
Nominal Pressure: PN0.6~6.4MPa  
Mediums: Steam, gas, liquid, oil, etc.  
Temperature Range: ≤650℃



**Q671F气动薄型球阀**  
Pneumatic thin ball valve

公称口径: DN15~100mm  
公称压力: PN0.6~6.4MPa  
适用介质: 水、蒸汽、油品  
适用温度: ≤150℃  
Nominal Diameter: DN15~100mm  
Nominal Pressure: PN0.6~6.4MPa  
Mediums: Water, steam, oil  
Temperature Range: ≤150℃



**VQ647H V型球阀**  
V-type ball valve

公称口径: DN25~300mm  
公称压力: PN1.0~4.0MPa  
适用介质: 水、溶剂、酸等  
适用温度: ≤250℃  
Nominal Diameter: DN25~300mm  
Nominal Pressure: PN1.0~4.0MPa  
Mediums: Water, solvent, acid, etc.  
Temperature Range: ≤250℃



**VQ641H气动V型球阀**  
Pneumatic V-shaped ball valve

公称口径: DN25~300mm  
公称压力: PN1.0~4.0MPa  
适用介质: 水、溶剂、酸等  
适用温度: ≤250℃  
Nominal Diameter: DN25~300mm  
Nominal Pressure: PN1.0~4.0MPa  
Mediums: Water, solvent, acid, etc.  
Temperature Range: ≤250℃



**QJ641M气动高温球阀**  
Pneumatic high temperature ball valve

公称口径: DN15~300mm  
公称压力: PN1.0~4.0MPa  
适用介质: 水、气、油品、天然气  
适用温度: ≤250℃  
Nominal Diameter: DN15~300mm  
Nominal Pressure: PN1.0~4.0MPa  
Mediums: Water, gas, oil, natural gas  
Temperature Range: ≤250℃



**BQ641F气动保温球阀**  
Pneumatic insulation ball valve

公称口径: DN25 ~ 500mm  
公称压力: PN1.6~4.0MPa  
适用介质: 水、蒸汽、油品  
适用温度: ≤150℃  
Nominal Diameter: DN25 ~ 500mm  
Nominal Pressure: PN1.6~4.0MPa  
Mediums: Water, steam, oil  
Temperature Range: ≤150℃



**FQ64P1FP气动罐底放料阀**  
Pneumatic tank bottom discharge valve

公称口径: DN 50~600mm  
公称压力: PN1.6~2.5MPa  
适用介质: 水、蒸汽、油品  
适用温度: ≤425℃  
Nominal Diameter: DN 50~600mm  
Nominal Pressure: PN1.6~2.5MPa  
Mediums: Water, steam, oil  
Temperature Range: ≤425℃



**FQ641F气动放料阀**  
Pneumatic discharge valve

公称口径: DN 50~600mm  
公称压力: PN1.6~2.5MPa  
适用介质: 水、蒸汽、油品  
适用温度: ≤150℃  
Nominal Diameter: DN 50~600mm  
Nominal Pressure: PN1.6~2.5MPa  
Mediums: Water, steam, oil  
Temperature Range: ≤150℃



**Q941F电动防爆球阀**  
Electric explosion ball valve

公称口径: DN15 ~ 250mm  
公称压力: PN1.0~6.4Mpa  
适用介质: 水、蒸汽、油品  
适用温度: ≤150℃  
Nominal Diameter: DN15 ~ 250mm  
Nominal Pressure: PN1.0~6.4Mpa  
Mediums: Water, steam, oil  
Temperature Range: ≤150℃



**Q971F电动固定球阀**  
Electric fixed ball valve

公称口径: DN15 ~ 250mm  
公称压力: PN1.0~6.4Mpa  
适用介质: 水、蒸汽、油品  
适用温度: ≤150℃  
Nominal Diameter: DN15 ~ 250mm  
Nominal Pressure: PN1.0~6.4Mpa  
Mediums: Water, steam, oil  
Temperature Range: ≤150℃



**Q945F电动三通球阀**  
Electric three-way ball valve

公称口径: DN15 ~ 100mm  
公称压力: PN0.6 ~ 6.4MPa  
适用介质: 蒸汽、气体、液体、油品  
适用温度: ≤150℃  
Nominal Diameter: DN15 ~ 100mm  
Nominal Pressure: PN0.6 ~ 6.4MPa  
Mediums: Steam, gas, liquid, oil, etc.  
Temperature Range: ≤150℃



**Q946F电动四通球阀**  
Electric four-way ball valve

公称口径: DN15 ~ 1200mm  
公称压力: PN1.6~4.0MPa  
适用介质: 水、气、油品等  
适用温度: ≤150℃  
Nominal Diameter: DN15 ~ 1200mm  
Nominal Pressure: PN1.6~4.0MPa  
Mediums: Water, gas and oil etc.  
Temperature Range: ≤150℃



**Q947H V型球阀**  
V-Ball Valve

公称口径: DN50 ~ 500mm  
公称压力: PN1.0~2.5MPa  
适用介质: 水、蒸汽、油品  
适用温度: ≤425℃  
Nominal Diameter: DN50 ~ 500mm  
Nominal Pressure: PN1.0~2.5MPa  
Mediums: Water, steam, oil  
Temperature Range: ≤425℃

# Butterfly valve

## series 蝶阀系列

全方位管道系统阀门集成解决方案  
Comprehensive pipeline system valve integration solution

www.jqfm-valve.com





**D373H硬密封对夹蝶阀**  
Hard seal on the clip valve

公称口径: DN50~2000mm  
公称压力: PN1.0~2.5MPa  
适用介质: 水、蒸汽、油品  
适用温度: ≤650℃  
Nominal Diameter: DN50~2000mm  
Nominal Pressure: PN1.0~2.5MPa  
Mediums: Water, steam and oil  
Temperature Range: ≤650℃



**D343H硬密封法兰蝶阀**  
Hard sealing flange butterfly valve

公称口径: DN50~2000mm  
公称压力: PN1.0~2.5MPa  
适用介质: 水、蒸汽、油品  
适用温度: ≤650℃  
Nominal Diameter: DN50~2000mm  
Nominal Pressure: PN1.0~2.5MPa  
Mediums: Water, steam and oil  
Temperature Range: ≤650℃



**D71H手柄蝶阀**  
Handle butterfly valve

公称口径: DN50~500mm  
公称压力: PN0.6~2.5MPa  
适用介质: 水、蒸汽、油品  
适用温度: ≤650℃  
Nominal diameter: DN50~500mm  
Nominal Pressure: PN0.6~2.5MPa  
Medium: Water, steam, oil  
Applicable temperature: ≤650℃



**LTD373H 不锈钢多层次蝶阀**  
Multi-level stainless steel butterfly valve

公称口径: DN50~2000mm  
公称压力: PN1.0~2.5MPa  
适用介质: 水、蒸汽、油品  
适用温度: ≤650℃  
Nominal Diameter: DN50~2000mm  
Nominal Pressure: PN1.0~2.5MPa  
Mediums: Water, steam, oil  
Temperature Range: ≤650℃



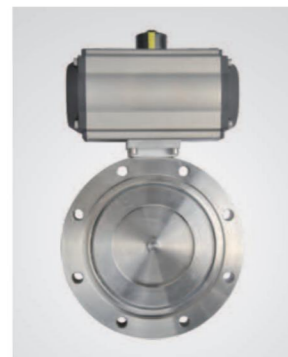
**D363H偏心对焊蝶阀**  
Three eccentric butt butterfly valve

公称口径: DN50~2000mm  
公称压力: PN1.0~2.5MPa  
适用介质: 水、蒸汽、油品  
适用温度: ≤650℃  
Nominal Diameter: DN50~2000mm  
Nominal Pressure: PN1.0~2.5MPa  
Mediums: Water, oil, steam  
Temperature Range: ≤650℃



**D341W通风蝶阀**  
Ventilation butterfly valve

公称口径: DN50~5000mm  
公称压力: PN0.05~0.6MPa  
适用介质: 含尘气体、烟道气  
适用温度: ≤350℃  
Nominal Diameter: DN50~5000mm  
Nominal Pressure: PN0.05~0.6MPa  
Mediums: Dust containing gas, flue gas  
Temperature Range: ≤350℃



**GIQ气动真空蝶阀**  
Pneumatic vacuum butterfly valve

公称口径: DN40~250mm  
公称压力: PN0.6~1.6MPa  
适用介质: 纯净空气和非腐蚀性气体  
适用温度: ≤120℃  
Nominal Diameter: DN40~250mm  
Nominal Pressure: PN0.6~1.6MPa  
Mediums: Clean air and non corrosive gases  
Temperature Range: ≤120℃



**TD941W电动法兰通风蝶阀**  
Electric butterfly valve

公称口径: DN50~5000mm  
公称压力: PN0.05~0.6MPa  
适用介质: 煤气、烟等  
适用温度: ≤350℃  
Nominal Diameter: DN50~5000mm  
Nominal Pressure: PN0.05~0.6MPa  
Mediums: Gas, smoke, etc.  
Temperature Range: ≤350℃



**SDt/d343H伸缩蝶阀**  
Telescopic butterfly valve

公称口径: DN50~600mm  
公称压力: PN1.0~4.0MPa  
适用介质: 水、蒸汽、油品  
适用温度: ≤650℃  
Nominal Diameter: DN50~600mm  
Nominal Pressure: PN1.0~4.0MPa  
Mediums: Water, steam, oil  
Temperature Range: ≤650℃



**D343H全金属法兰蝶阀**  
All metal flange butterfly valve

公称口径: DN50~1200mm  
公称压力: PN0.6~2.5MPa  
适用介质: 水、油品  
适用温度: ≤650℃  
Nominal diameter: DN50~1200mm  
Nominal Pressure: PN0.6~2.5MPa  
Medium: Water, oil  
Applicable temperature: ≤650℃



**D373高性能硬碰硬对夹蝶阀**  
High performance hard to hard wafer butterfly valve

公称口径: DN50~300mm  
公称压力: PN1.0~2.5MPa  
适用介质: 水、油品  
适用温度: ≤650℃  
Nominal diameter: DN50~300mm  
Nominal Pressure: PN1.0~2.5MPa  
Mediums: Water, oil  
Applicable temperature: ≤650℃



**D341H双向压蝶阀**  
Bidirectional pressure butterfly valve

公称口径: DN50~1200mm  
公称压力: PN1.0~25.0MPa  
适用介质: 蒸汽、气体、液体、油品  
适用温度: ≤650℃  
Nominal Diameter: DN50~1200mm  
Nominal Pressure: PN1.0~25.0MPa  
Mediums: Steam, gas, liquid, oil, etc.  
Temperature Range: ≤650℃



**D343H耐高温蝶阀**  
High-temperature butterfly valve

公称口径: DN50~2000mm  
公称压力: PN1.0~4.0MPa  
适用介质: 水、蒸汽、油品  
适用温度: ≤650℃  
Nominal Diameter: DN50~2000mm  
Nominal Pressure: PN1.0~4.0MPa  
Mediums: Water, steam, oil  
Temperature Range: ≤650℃



**D71信号蝶阀**  
Signal Butterfly Valve

公称口径: DN50~300mm  
公称压力: PN1.0~2.5MPa  
适用介质: 水、油品  
适用温度: ≤650℃  
Nominal diameter: DN50~300mm  
Nominal Pressure: PN1.0~2.5MPa  
Mediums: Water, oil  
Applicable temperature: ≤650℃



**D373H加长杆蝶阀**  
Extension rod butterfly valve

公称口径: DN50~2000mm  
公称压力: PN1.6~2.5MPa  
适用介质: 水、蒸汽、油品  
适用温度: ≤650℃  
Nominal diameter: DN50~2000mm  
Nominal Pressure: PN1.6~2.5MPa  
Mediums: Water, steam, oil  
Applicable temperature: ≤650℃



**HD741X蝶阀液压控制阀**  
Butterfly valve hydraulic control valve

公称口径: DN500~6000mm  
公称压力: PN0.6~1.0MPa  
适用介质: 水、海水、黄河水  
适用温度: ≤80℃  
Nominal diameter: DN500~6000mm  
Nominal Pressure: PN0.6~1.0MPa  
Mediums: Water, sea water, Yellow River  
Applicable temperature: ≤80℃



**D341TC手动陶瓷蝶阀**  
Manual ceramic butterfly valve

公称口径: DN50~300mm  
公称压力: PN0.6~1.6MPa  
适用介质: 酸碱盐气体、液体  
适用温度: ≤120°C  
Nominal Diameter: DN50~300mm  
Nominal Pressure: PN0.6~1.6MPa  
Mediums: Acid base salt gas and liquid  
Temperature Range: ≤120°C



**D371TC陶瓷蝶阀**  
Ceramic butterfly valve

公称口径: DN50~300mm  
公称压力: PN0.6~1.6MPa  
适用介质: 酸碱盐气体、液体  
适用温度: ≤120°C  
Nominal Diameter: DN50~300mm  
Nominal Pressure: PN0.6~1.6MPa  
Mediums: Acid base salt gas and liquid  
Temperature Range: ≤120°C



**D673H气动对夹硬密封蝶阀**  
Pneumatic butterfly valve with hard seal

公称口径: DN15~800mm  
公称压力: PN0.6~1.6MPa  
适用介质: 蒸汽、气体、液体、油品  
适用温度: ≤650°C  
Nominal Diameter: DN15~800mm  
Nominal Pressure: PN0.6~1.6MPa  
Mediums: Steam, gas, liquid, oil  
Temperature Range: ≤650°C



**D641F气动法兰硬密封蝶阀**  
Pneumatic flanged hard sealed butterfly valve

公称口径: DN15~800mm  
公称压力: PN0.6~1.6MPa  
适用介质: 蒸汽、气体、液体、油品  
适用温度: -15°C~150°C  
Nominal Diameter: DN15~800mm  
Nominal Pressure: PN0.6~1.6MPa  
Mediums: Steam, gas, liquid, oil  
Temperature Range: -15°C~150°C



**D643H气动蝶阀**  
Pneumatic Butterfly Valve

公称口径: DN50~1200mm  
公称压力: PN0.6~2.5MPa  
适用介质: 水、油品  
适用温度: ≤650°C  
Nominal diameter: DN50~1200mm  
Nominal Pressure: PN0.6~2.5MPa  
Medium: Water, oil  
Applicable temperature: ≤650°C



**LTD673H气动凸耳蝶阀**  
Pneumatic lug butterfly valve

公称口径: DN50~1200mm  
公称压力: PN0.6~2.5MPa  
适用介质: 水、油品  
适用温度: -30°C~425°C  
Nominal diameter: DN50~1200mm  
Nominal Pressure: PN0.6~2.5MPa  
Medium: Water, oil  
Applicable temperature: -30°C~425°C



**GD673H气动高性能蝶阀**  
Pneumatic high performance butterfly valve

公称口径: DN50~800mm  
公称压力: PN0.25~10.0MPa  
适用介质: 水、油品、蒸汽  
适用温度: ≤425°C  
Nominal Diameter: DN50~800mm  
Nominal Pressure: PN0.25~10.0MPa  
Mediums: Water, oil, steam  
Temperature Range: ≤425°C



**黄铜氧气蝶阀**  
Brass Oxygen Butterfly Valve

公称口径: DN50~500mm  
公称压力: PN1.0~2.5MPa  
适用介质: 氧气、氮气  
适用温度: ≤150°C  
Nominal diameter: DN50~500mm  
Nominal Pressure: PN1.0~2.5MPa  
Mediums: Oxygen, nitrogen  
Applicable temperature: ≤150°C



**UPVC气动塑料蝶阀**  
UPVC pneumatic plastic butterfly valve

公称口径: DN50~200mm  
公称压力: PN1.0MPa  
适用介质: PVC的兼容食品工业化学溶剂  
适用温度: ≤60°C  
Nominal Diameter: DN50~200mm  
Nominal Pressure: PN1.0MPa  
Mediums: PVC compatible chemical solvent for food industry  
Temperature Range: ≤60°C



**DWD673H气动低温蝶阀**  
Pneumatic low temperature butterfly valve

公称口径: DN15~400mm  
公称压力: PN1.0~4.0MPa  
适用介质: 甲烷、液态天然气等  
适用温度: ≥-196°C  
Nominal Diameter: DN15~400mm  
Nominal Pressure: PN1.0~4.0MPa  
Mediums: Methane, liquid natural gas, etc  
Temperature Range: ≥-196°C



**气动粉尘蝶阀**  
Pneumatic dust butterfly valve

公称口径: DN50~1200mm  
公称压力: PN1.0~25.0MPa  
适用介质: 蒸汽、气体、液体、油品  
适用温度: ≤650°C  
Nominal Diameter: DN50~1200mm  
Nominal Pressure: PN1.0~25.0MPa  
Mediums: Steam, gas, liquid, oil, etc.  
Temperature Range: ≤650°C



**D973H电动对夹蝶阀**  
Electric butterfly butterfly valve

公称口径: DN50~500mm  
公称压力: PN1.6~10Mpa  
适用介质: 水、蒸汽、油品  
适用温度: ≤650°C  
Nominal Diameter: DN50~500mm  
Nominal Pressure: PN1.6~10Mpa  
Mediums: Water, steam, oil  
Temperature Range: ≤650°C



**D941H电动法兰蝶阀**  
Electric Flange Butterfly Valve

公称口径: DN50~500mm  
公称压力: PN1.6~10Mpa  
适用介质: 水、蒸汽、油品  
适用温度: ≤650°C  
Nominal Diameter: DN50~500mm  
Nominal Pressure: PN1.6~10Mpa  
Mediums: Water, steam, oil  
Temperature Range: ≤650°C



**D943H电动三偏心法兰连接蝶阀**  
Electric three eccentric flange butterfly valve

公称口径: DN50~2000mm  
公称压力: PN0.6~2.5MPa  
适用介质: 烟气、空气可燃性气体  
适用温度: ≤650°C  
Nominal diameter: DN50~2000mm  
Nominal Pressure: PN0.6~2.5MPa  
Mediums: Flue gas, air and combustible gas  
Applicable temperature: ≤650°C



**D940H杠杆式密封蝶阀**  
Lever seal butterfly valve

公称口径: DN50~2000mm  
公称压力: PN0.6~2.5MPa  
适用介质: 烟气、空气可燃性气体  
适用温度: ≤500°C  
Nominal diameter: DN50~2000mm  
Nominal Pressure: PN0.6~2.5MPa  
Mediums: Flue gas, air and combustible gas  
Applicable temperature: ≤500°C



**GD973H电动高性能蝶阀**  
Electric high performance butterfly valve

公称口径: DN50~800mm  
公称压力: PN0.25~10.0MPa  
适用介质: 水、油品、蒸汽  
适用温度: ≤650°C  
Nominal Diameter: DN50~800mm  
Nominal Pressure: PN0.25~10.0MPa  
Mediums: Water, oil, steam  
Temperature Range: ≤650°C

# Forged steel valve

## series 锻钢阀门系列

全方位管道系统阀门集成解决方案  
Comprehensive pipeline system valve integration solution

www.jqfm-valve.com



## 锻钢阀门系列 Forged steel valve series

全方位管道系统阀门集成解决方案  
Comprehensive pipeline system valve integration solution



**Z41Y全径系列闸阀**  
Full diameter series gate valve

公称通径: DN10 ~ 200mm  
公称压力: PN1.6~32.0MPa  
适用介质: 水、蒸汽、油品  
适用温度: ≤650°C  
Nominal diameter: DN10 ~ 200mm  
Nominal Pressure: PN1.6~32.0MPa  
Medium: Water, steam, oil  
Applicable temperature: ≤650°C



**NKZ41H系列真空阀**  
Vacuum valve

公称通径: DN10 ~ 200mm  
公称压力: PN1.6~32.0MPa  
适用介质: 水、蒸汽、油品  
适用温度: ≤650°C  
Nominal diameter: DN10 ~ 200mm  
Nominal Pressure: PN1.6~32.0MPa  
Medium: Water, steam, oil  
Applicable temperature: ≤650°C



**Z61H导淋闸阀**  
Shower guide gate valve

公称通径: DN10 ~ 200mm  
公称压力: PN1.6~32.0MPa  
适用介质: 水、蒸汽、油品  
适用温度: ≤650°C  
Nominal diameter: DN10 ~ 200mm  
Nominal Pressure: PN1.6~32.0MPa  
Medium: Water, steam, oil  
Applicable temperature: ≤650°C



**Z61Y自密封闸阀**  
Self sealing gate valve

公称通径: DN10 ~ 200mm  
公称压力: PN1.6~32.0MPa  
适用介质: 水、蒸汽、油品  
适用温度: ≤650°C  
Nominal diameter: DN10 ~ 200mm  
Nominal Pressure: PN1.6~32.0MPa  
Medium: Water, steam, oil  
Applicable temperature: ≤650°C



**Z941H电动闸阀**  
Electric gate valve

公称通径: DN10 ~ 200mm  
公称压力: PN1.6~32.0MPa  
适用介质: 水、蒸汽、油品  
适用温度: ≤650°C  
Nominal diameter: DN10 ~ 200mm  
Nominal Pressure: PN1.6~32.0MPa  
Medium: Water, steam, oil  
Applicable temperature: ≤650°C



**DZ41W低温闸阀**  
Low temperature gate valve

公称通径: DN10 ~ 200mm  
公称压力: PN1.6~32.0MPa  
适用介质: 水、蒸汽、油品  
适用温度: ≥-196°C  
Nominal diameter: DN10 ~ 200mm  
Nominal Pressure: PN1.6~32.0MPa  
Medium: Water, steam, oil  
Applicable temperature: ≥-196°C



**J41H法兰锻钢截止阀**  
Forged steel globe valve

公称通径: DN10 ~ 200mm  
公称压力: PN1.6~32.0MPa  
适用介质: 水、蒸汽、油品  
适用温度: ≤650°C  
Nominal diameter: DN10 ~ 200mm  
Nominal Pressure: PN1.6~32.0MPa  
Medium: Water, steam, oil  
Applicable temperature: ≤650°C



**J61H锻钢截止阀**  
Forged steel globe valve

公称通径: DN10 ~ 200mm  
公称压力: PN1.6~32.0MPa  
适用介质: 水、蒸汽、油品  
适用温度: ≤650°C  
Nominal diameter: DN10 ~ 200mm  
Nominal Pressure: PN1.6~32.0MPa  
Medium: Water, steam, oil  
Applicable temperature: ≤650°C



**J61H锻钢截止阀**  
Forged steel globe valve

公称通径: DN10 ~ 200mm  
公称压力: PN1.6~32.0MPa  
适用介质: 水、蒸汽、油品  
适用温度: ≤650℃  
Nominal diameter: DN10 ~ 200mm  
Nominal Pressure: PN1.6~32.0MPa  
Medium: Water, steam, oil  
Applicable temperature: ≤650℃



**J41W低温截止阀**  
Low temperature stop valve

公称通径: DN10 ~ 200mm  
公称压力: PN1.6~32.0MPa  
适用介质: 水、蒸汽、油品  
适用温度: ≥-196℃  
Nominal diameter: DN10 ~ 200mm  
Nominal Pressure: PN1.6~32.0MPa  
Medium: Water, steam, oil  
Applicable temperature: ≥-196℃



**H42立式止回阀**  
Vertical check valve

公称通径: DN15 ~ 200mm  
公称压力: PN2.5~10.0MPa  
适用介质: 水、蒸汽、油品  
适用温度: ≤650℃  
Nominal diameter: DN15 ~ 200mm  
Nominal Pressure: PN2.5~10.0MPa  
Medium: Water, steam, oil  
Applicable temperature: ≤650℃



**H44H旋启式止回阀**  
Swing check valve

公称通径: DN15 ~ 200mm  
公称压力: PN2.5~10.0MPa  
适用介质: 水、蒸汽、油品  
适用温度: ≤650℃  
Nominal diameter: DN15 ~ 200mm  
Nominal Pressure: PN2.5~10.0MPa  
Medium: Water, steam, oil  
Applicable temperature: ≤650℃



**H41H升降式止回阀**  
Lift check valve

公称通径: DN15 ~ 200mm  
公称压力: PN2.5~10.0MPa  
适用介质: 水、蒸汽、油品  
适用温度: ≤650℃  
Nominal diameter: DN15 ~ 200mm  
Nominal Pressure: PN2.5~10.0MPa  
Medium: Water, steam, oil  
Applicable temperature: ≤650℃



**Q11H丝扣球阀**  
Threaded ball valve

公称通径: DN15 ~ 200mm  
公称压力: PN2.5~10.0MPa  
适用介质: 水、蒸汽、油品  
适用温度: ≤650℃  
Nominal diameter: DN15 ~ 200mm  
Nominal Pressure: PN2.5~10.0MPa  
Medium: Water, steam, oil  
Applicable temperature: ≤650℃



**GL41H过滤器**  
Filter

公称通径: DN10 ~ 50mm  
公称压力: PN1.6~32.0MPa  
适用介质: 水、蒸汽、油品  
适用温度: ≤650℃  
Nominal diameter: DN10 ~ 50mm  
Nominal Pressure: PN1.6~32.0MPa  
Medium: Water, steam, oil  
Applicable temperature: ≤650℃



**GL61W过滤器**  
Filter

公称通径: DN10 ~ 50mm  
公称压力: PN1.6~32.0MPa  
适用介质: 水、蒸汽、油品  
适用温度: ≤650℃  
Nominal diameter: DN10 ~ 50mm  
Nominal Pressure: PN1.6~32.0MPa  
Medium: Water, steam, oil  
Applicable temperature: ≤650℃

# Gas valve

## series 燃气阀系列

全方位管道系统阀门集成解决方案  
Comprehensive pipeline system valve integration solution  
www.jqfm-valve.com





**Q41F型燃气浮动式球阀**  
Gas floating ball valve

公称口径: DN15~250mm  
公称压力: PN1.0~4.0MPa  
适用介质: 液化气、天然气、石油等  
适用温度: ≤80℃  
Nominal Diameter: DN15~250mm  
Nominal Pressure: PN1.0~4.0MPa  
Mediums: Liquefied gas, natural gas, petroleum, etc  
Temperature Range: ≤80℃



**Q341F型燃气浮动式球阀**  
Gas floating ball valve

公称口径: DN15~200mm  
公称压力: PN1.0~4.0MPa  
适用介质: 液化气、天然气、石油等  
适用温度: ≤80℃  
Nominal Diameter: DN15~200mm  
Nominal Pressure: PN1.0~4.0MPa  
Mediums: Liquefied gas, natural gas, petroleum, etc  
Temperature Range: ≤80℃



**Q641F燃气浮动式球阀**  
Gas floating ball valve

公称口径: DN15~250mm  
公称压力: PN1.0~4.0MPa  
适用介质: 液化气、天然气、石油等  
适用温度: ≤80℃  
Nominal Diameter: DN15~250mm  
Nominal Pressure: PN1.0~4.0MPa  
Mediums: Liquefied gas, natural gas, petroleum, etc  
Temperature Range: ≤80℃



**Q941F燃气浮动式球阀**  
Gas floating ball valve

公称口径: DN15~250mm  
公称压力: PN1.0~4.0MPa  
适用介质: 液化气、天然气、石油等  
适用温度: ≤80℃  
Nominal Diameter: DN15~250mm  
Nominal Pressure: PN1.0~4.0MPa  
Mediums: Liquefied gas, natural gas, petroleum, etc  
Temperature Range: ≤80℃



**Q41F 低扭矩球阀**  
Low torque ball valve

公称口径: DN15~250mm  
公称压力: PN1.0~4.0MPa  
适用介质: 液化气、天然气、石油等  
适用温度: ≤80℃  
Nominal Diameter: DN15~250mm  
Nominal Pressure: PN1.0~4.0MPa  
Mediums: Liquefied gas, natural gas, petroleum, etc  
Temperature Range: ≤80℃



**Q347F燃气固定式球阀**  
Gas fixed ball valve

公称口径: DN50~700mm  
公称压力: PN1.6~10.0MPa  
适用介质: 液化气、天然气、石油等  
适用温度: ≤350℃  
Nominal Diameter: DN50~700mm  
Nominal Pressure: PN1.0~10.0MPa  
Mediums: Liquefied gas, natural gas, petroleum, etc  
Temperature Range: ≤350℃



**美标锻钢固定式球阀**  
American Standard forged steel fixed ball valve

公称口径: 10"~24"  
公称压力: 300~2500Lb  
适用介质: 液化气、天然气、石油等  
适用温度: ≤350℃  
Nominal Diameter: 10"~24"  
Nominal Pressure: 300~2500Lb  
Mediums: Liquefied gas, natural gas, petroleum, etc  
Temperature Range: ≤350℃



**H41N卧式止回阀**  
Horizontal check valve

公称口径: DN15~200mm  
公称压力: PN1.6~4.0MPa  
适用介质: 液化气、天然气、石油等  
适用温度: ≤80℃  
Nominal Diameter: DN15~200mm  
Nominal Pressure: PN1.6~4.0MPa  
Mediums: Liquefied gas, natural gas, petroleum, etc  
Temperature Range: ≤80℃



**H42N立式止回阀**  
Vertical check valve

公称口径: DN15~200mm  
公称压力: PN1.6~4.0MPa  
适用介质: 液化气、天然气、石油等  
适用温度: ≤80℃  
Nominal Diameter: DN15~200mm  
Nominal Pressure: PN1.6~4.0MPa  
Mediums: Liquefied gas, natural gas, petroleum, etc  
Temperature Range: ≤80℃



**HGS07 Y型过滤器**  
Y-type filter

公称口径: DN15~400mm  
公称压力: PN1.6~4.0MPa  
适用介质: 液化气、天然气、石油等  
适用温度: ≤80℃  
Nominal Diameter: DN15~400mm  
Nominal Pressure: PN1.6~4.0MPa  
Mediums: Liquefied gas, natural gas, petroleum, etc  
Temperature Range: ≤80℃



**A42F燃气专用安全阀**  
Special safety valve for gas

公称口径: DN25~200mm  
公称压力: PN1.6~4.0MPa  
适用介质: 液化气、天然气、石油等  
适用温度: ≤120℃  
Nominal Diameter: DN25~200mm  
Nominal Pressure: PN1.6~4.0MPa  
Mediums: Liquefied gas, natural gas, petroleum, etc  
Temperature Range: ≤120℃



**RAQ系列燃气安全切断阀**  
Gas safety shut-off valve

公称口径: DN50~300mm  
公称压力: ≤0.6MPa  
适用介质: 液化气、天然气、石油等  
适用温度: ≤80℃  
Nominal Diameter: DN50~300mm  
Nominal Pressure: ≤0.6MPa  
Mediums: Liquefied gas, natural gas, petroleum, etc  
Temperature Range: ≤80℃



**H44N旋启式止回阀**  
Swing check valve

公称口径: DN25~200mm  
公称压力: PN1.0~4.0MPa  
适用介质: 液化气、天然气、石油等  
适用温度: ≤80℃  
Nominal Diameter: DN25~200mm  
Nominal Pressure: PN1.0~4.0MPa  
Mediums: Liquefied gas, natural gas, petroleum, etc  
Temperature Range: ≤80℃



**DMF-0.1型电磁煤气安全切断阀**  
Electromagnetic gas safety shut-off valve

公称口径: DN100~250mm  
公称压力: PN0.1MPa  
适用介质: 液化气、天然气、石油等  
适用温度: ≤80℃  
Nominal Diameter: DN100~250mm  
Nominal Pressure: PN0.1MPa  
Mediums: Liquefied gas, natural gas, petroleum, etc  
Temperature Range: ≤80℃



**GZW-1管道阻火器**  
Flame arresters

公称口径: DN15~200mm  
公称压力: PN1.6~4.0MPa  
适用介质: 液化气、天然气、石油等  
适用温度: ≤120℃  
Nominal Diameter: DN15~200mm  
Nominal Pressure: PN1.6~4.0MPa  
Mediums: Liquefied gas, natural gas, petroleum, etc  
Temperature Range: ≤120℃



**RGQ系列燃气安全切断阀**  
Gas safety shut-off valve

公称口径: DN50~150mm  
公称压力: ≤0.01~6.4MPa  
适用介质: 液化气、天然气、石油等  
适用温度: ≤80℃  
Nominal Diameter: DN15~150mm  
Nominal Pressure: ≤0.01~6.4MPa  
Mediums: Liquefied gas, natural gas, petroleum, etc  
Temperature Range: ≤80℃



**JIS天然气截止阀(仿日式)**  
Natural gas stop valve (Japanese style)

公称通径: DN15~200mm  
公称压力: PN1.6~6.4MPa  
适用介质: 液化气、天然气、石油等  
适用温度: ≤80°C  
Nominal Diameter: DN50~200mm  
Nominal Pressure: PN1.6~6.4MPa  
Mediums: Liquefied gas, natural gas, petroleum, etc  
Temperature Range: ≤80°C



**J41H液化气截止阀**  
Lpg globe valve

公称通径: DN15~200mm  
公称压力: PN1.6~6.4MPa  
适用介质: 液化气、天然气、石油等  
适用温度: ≤80°C  
Nominal Diameter: DN50~200mm  
Nominal Pressure: PN1.6~6.4MPa  
Mediums: Liquefied gas, natural gas, petroleum, etc  
Temperature Range: ≤80°C



**J41N燃气截止阀**  
Gas globe valve

公称通径: DN15~300mm  
公称压力: PN1.6~6.4MPa  
适用介质: 液化气、天然气、石油等  
适用温度: ≤80°C  
Nominal Diameter: DN15~300mm  
Nominal Pressure: PN1.6~6.4MPa  
Mediums: Liquefied gas, natural gas, petroleum, etc  
Temperature Range: ≤80°C



**JY41N暗杆截止阀**  
Non rising stem stop valve

公称通径: DN15~300mm  
公称压力: PN1.6~4.0MPa  
适用介质: 液化气、天然气、石油等  
适用温度: ≤80°C  
Nominal Diameter: DN15~300mm  
Nominal Pressure: PN1.6~4.0MPa  
Mediums: Liquefied gas, natural gas, petroleum, etc  
Temperature Range: ≤80°C



**QDQ421F气动紧急切断阀**  
Pneumatic emergency shut-off valve

公称通径: DN50~350mm  
公称压力: PN2.5~4.0MPa  
适用介质: 液化气、天然气、石油等  
适用温度: ≤80°C  
Nominal Diameter: DN50~350mm  
Nominal Pressure: PN2.5~4.0MPa  
Mediums: Liquefied gas, natural gas, petroleum, etc  
Temperature Range: ≤80°C



**QDY42F液动紧急切断阀**  
Hydraulic emergency shut-off valve

公称通径: DN15~300mm  
公称压力: PN2.5~4.0MPa  
适用介质: 液化气、天然气、石油等  
适用温度: ≤80°C  
Nominal Diameter: DN15~300mm  
Nominal Pressure: PN2.5~4.0MPa  
Mediums: Liquefied gas, natural gas, petroleum, etc  
Temperature Range: ≤80°C



**ZCRB燃气紧急切断阀**  
Gas emergency shut-off valve

公称通径: DN15~350mm  
公称压力: PN1.6~4.0MPa  
适用介质: 液化气、天然气、石油等  
适用温度: ≤80°C  
Nominal Diameter: DN15~350mm  
Nominal Pressure: PN1.6~4.0MPa  
Mediums: Liquefied gas, natural gas, petroleum, etc  
Temperature Range: ≤80°C



**DJ661F低温气动紧急切断阀**  
Low temperature pneumatic emergency shut-off valve

公称通径: DN15~350mm  
公称压力: PN1.6~4.0MPa  
适用介质: 液化气、天然气、石油等  
适用温度: ≤80°C  
Nominal Diameter: DN15~350mm  
Nominal Pressure: PN1.6~4.0MPa  
Mediums: Liquefied gas, natural gas, petroleum, etc  
Temperature Range: ≤80°C

# Metallurgical valve

## series 冶金阀系列

全方位管道系统阀门集成解决方案  
Comprehensive pipeline system valve integration solution  
www.jqfm-valve.com





**F43X手动扇形盲板阀**  
Manual sector blind valve

公称口径: DN50 ~ 2000mm  
公称压力: PN0.05~0.25MPa  
适用介质: 煤气及有毒、有害气体  
适用温度: ≤300℃  
Nominal diameter: DN50 ~ 2000mm  
Nominal Pressure: PN0.05~0.25MPa  
Medium: Coal gas and toxic and harmful gases  
Applicable temperature: ≤300℃



**F43AX手动蜗轮传动盲板阀**  
Manual worm gear drive blind valve

公称口径: DN50 ~ 2000mm  
公称压力: PN0.05~0.25MPa  
适用介质: 煤气及有毒、有害气体  
适用温度: ≤300℃  
Nominal diameter: DN50 ~ 2000mm  
Nominal Pressure: PN0.05~0.25MPa  
Medium: Coal gas and toxic and harmful gases  
Applicable temperature: ≤300℃



**F643X气动扇形盲板阀**  
Pneumatic sector blind valve

公称口径: DN300 ~ 2000mm  
公称压力: PN0.05~0.25MPa  
适用介质: 煤气及有毒、有害气体  
适用温度: ≤300℃  
Nominal diameter: DN300 ~ 2000mm  
Nominal Pressure: PN0.05~0.25MPa  
Medium: Coal gas and toxic and harmful gases  
Applicable temperature: ≤300℃



**F943X电动推杆扇形盲板阀**  
Electric push rod sector blind valve

公称口径: DN300 ~ 2000mm  
公称压力: PN0.05~0.25MPa  
适用介质: 煤气及有毒、有害气体  
适用温度: ≤300℃  
Nominal diameter: DN300 ~ 2000mm  
Nominal Pressure: PN0.05~0.25MPa  
Medium: Coal gas and toxic and harmful gases  
Applicable temperature: ≤300℃



**HF943X电液动盲板阀**  
Electro hydraulic blind valve

公称口径: DN400 ~ 2800mm  
公称压力: PN0.05~0.25MPa  
适用介质: 煤气及有毒、有害气体  
适用温度: ≤300℃  
Nominal diameter: DN400 ~ 2800mm  
Nominal Pressure: PN0.05~0.25MPa  
Medium: Coal gas and toxic and harmful gases  
Applicable temperature: ≤300℃



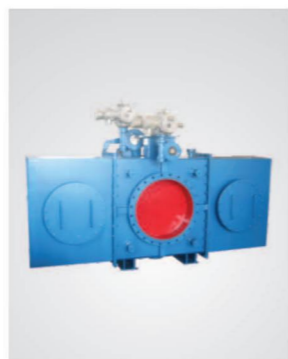
**F943X电动盲板阀**  
Electric blind valve

公称口径: DN400 ~ 2800mm  
公称压力: PN0.05~0.25MPa  
适用介质: 煤气及有毒、有害气体  
适用温度: ≤300℃  
Nominal diameter: DN400 ~ 2800mm  
Nominal Pressure: PN0.05~0.25MPa  
Medium: Coal gas and toxic and harmful gases  
Applicable temperature: ≤300℃



**KF941X敞开式插板阀**  
Open gate valve

公称口径: DN400 ~ 2800mm  
公称压力: PN0.05~0.25MPa  
适用介质: 煤气及有毒、有害气体  
适用温度: ≤300℃  
Nominal diameter: DN400 ~ 2800mm  
Nominal Pressure: PN0.05~0.25MPa  
Medium: Coal gas and toxic and harmful gases  
Applicable temperature: ≤300℃



**FF941H封闭式插板阀**  
Closed gate valve

公称口径: DN400 ~ 2800mm  
公称压力: PN0.05~0.25MPa  
适用介质: 煤气及有毒、有害气体  
适用温度: ≤300℃  
Nominal diameter: DN400 ~ 2800mm  
Nominal Pressure: PN0.05~0.25MPa  
Medium: Coal gas and toxic and harmful gases  
Applicable temperature: ≤300℃



**电动双层卸灰阀**  
Electric double-layer ash discharge valve

公称口径: DN150~800mm  
结构形式: 圆形、方形  
适用介质: 小颗粒物质  
适用温度: ≤300℃  
Nominal diameter: DN150 ~ 800mm  
Structure form: round, square  
Mediums: small particulate matter  
Applicable temperature: ≤300℃



**智能式双层卸灰阀**  
Intelligent double-layer ash discharge valve

公称口径: DN200~800mm  
结构形式: 方形(正、侧)  
适用介质: 粉状物质  
适用温度: ≤300℃  
Nominal diameter: DN200 ~ 800mm  
Structure: square (front and side)  
Mediums: powdery substance  
Applicable temperature: ≤300℃



**气动卸灰球阀**  
Pneumatic ash unloading ball valve

公称口径: DN200~800mm  
适用介质: 煤气尘灰  
适用温度: 300℃  
Nominal diameter: DN200 ~ 800mm  
Mediums: gas dust  
Applicable temperature: 300℃



**煤气放散阀**  
Gas release valve

公称口径: DN100 ~ 1400mm  
公称压力: PN0.05~0.25MPa  
适用介质: 煤气及有毒、有害气体  
适用温度: ≤300℃  
Nominal diameter: DN100 ~ 1400mm  
Nominal Pressure: PN0.05~0.25MPa  
Medium: Coal gas and toxic and harmful gases  
Applicable temperature: ≤300℃



**弹压式自闭防爆阀**  
Elastic pressure self closing explosion-proof valve

公称口径: DN100 ~ 1400mm  
公称压力: PN0.05~0.25MPa  
适用介质: 煤气及有毒、有害气体  
适用温度: ≤300℃  
Nominal diameter: DN100 ~ 1400mm  
Nominal Pressure: PN0.05~0.25MPa  
Medium: Coal gas and toxic and harmful gases  
Applicable temperature: ≤300℃



**活动角型废气阀**  
Movable angle exhaust valve

公称口径: DN100 ~ 1400mm  
公称压力: PN0.05~0.25MPa  
适用介质: 煤气及有毒、有害气体  
适用温度: ≤300℃  
Nominal diameter: DN100 ~ 1400mm  
Nominal Pressure: PN0.05~0.25MPa  
Medium: Coal gas and toxic and harmful gases  
Applicable temperature: ≤300℃



**拍门**  
Clap door

公称口径: DN100 ~ 1400mm  
公称压力: PN0.05~0.25MPa  
适用介质: 煤气及有毒、有害气体  
适用温度: ≤300℃  
Nominal diameter: DN100 ~ 1400mm  
Nominal Pressure: PN0.05~0.25MPa  
Medium: Coal gas and toxic and harmful gases  
Applicable temperature: ≤300℃



**电液动平板闸门**  
Electro hydraulic flat gate

公称口径: DN100 ~ 1400mm  
公称压力: PN0.05~0.25MPa  
适用介质: 煤气及有毒、有害气体  
适用温度: ≤300℃  
Nominal diameter: DN100 ~ 1400mm  
Nominal Pressure: PN0.05~0.25MPa  
Medium: Coal gas and toxic and harmful gases  
Applicable temperature: ≤300℃



**ZK9RW耐磨尘气蝶阀**  
Wear-resistant dust gas butterfly valve

公称口径: DN80~6000mm  
公称压力: PN0.01MPa  
主要材质: SS41、SUS304、SUS316  
适用温度: ≤600℃  
  
Nominal diameter: DN80 ~ 6000mm  
Nominal pressure: PN0.01MPa  
Main materials: SS41, SUS304, SUS316  
Applicable temperature: ≤600℃



**DS9D413水冷式超高温蝶阀**  
Water-cooled ultra-high temperature butterfly valve

公称口径: DN150~3000mm  
公称压力: PN0.01MPa  
适用介质: 超高温气体  
适用温度: ≤1300℃  
  
Nominal diameter: DN150 ~ 3000mm  
Nominal pressure: PN0.01MPa  
Mediums: ultra-high temperature gas  
Applicable temperature: ≤1300℃



**D944X翻板式密封蝶阀**  
Flap type sealed butterfly valve

公称口径: DN400~2800mm  
公称压力: PN0.005MPa  
主要材质: 碳钢、不锈钢等  
适用温度: ≤350℃  
  
Nominal diameter: DN400 ~ 2800mm  
Nominal pressure: PN0.005MPa  
Main material: carbon steel, stainless steel, etc.  
Applicable temperature: ≤350℃



**ZR7/943Y水冷高温热风阀**  
Water-cooled high-air temperature hot air valve

公称口径: DN300~1700mm  
公称压力: PN0.25~0.6MPa  
主要材质: 碳钢、不锈钢  
适用温度: ≤350℃  
  
Nominal diameter: DN300 ~ 1700mm  
Nominal pressure: PN0.25 ~ 0.6MPa  
Main material: carbon steel, stainless steel  
Applicable temperature: ≤350℃



**LPD/LPS启闭排灰阀**  
Opening and closing ash discharge valve

公称口径: DN80~600mm  
结构形式: 圆形、方形  
适用介质: 固体粉质  
适用温度: ≤350℃  
  
Nominal diameter: DN80 ~ 600mm  
Structure form: round, square  
Mediums: solid powder  
Applicable temperature: ≤350℃



**真空隔离阀**  
Vacuum isolation valve

公称口径: DN100~350mm  
公称压力: PN0.1MPa  
适用介质: 干燥物质  
适用温度: ≤300℃  
  
Nominal diameter: DN100 ~ 350mm  
Nominal pressure: PN0.1MPa  
Mediums: dry substance  
Applicable temperature: ≤300℃



**GY叶轮给料机**  
Impeller feeder

公称口径: DN150~800mm  
结构形式: 圆形、方形  
适用介质: 小颗粒状物质  
适用温度: ≤250℃  
  
Nominal diameter: DN150~800mm  
Structure: round, square  
Mediums: small particulate matter  
Applicable temperature: ≤250℃



**J744/J644X排泥阀**  
Sludge valve

公称口径: DN150~500mm  
安装形式: 法兰式  
适用介质: 污水  
工作水深: 小于10米  
  
Nominal diameter: DN150 ~ 500mm  
Installation form: flange type  
Mediums: sewage  
Working water depth: less than 10 meters



**SFH648W水封逆止阀**  
Water seal check valve

公称口径: DN800~2700mm  
公称压力: PN0.01MPa  
主要材质: 碳钢等  
适用温度: ≤100℃  
  
Nominal diameter: DN800 ~ 2700mm  
Nominal pressure: PN0.01MPa  
Main material: carbon steel, etc.  
Applicable temperature: ≤100℃



**STD341X三通煤气切换蝶阀**  
Three-way gas switching butterfly valve

公称口径: DN500~2400mm  
公称压力: PN0.05MPa  
主要材质: 碳钢等  
适用温度: ≤120℃  
  
Nominal diameter: DN500 ~ 2400mm  
Nominal pressure: PN0.05MPa  
Main material: carbon steel, etc.  
Applicable temperature: ≤120℃



**四通溜子**  
Stones

公称口径: DN200~400mm  
结构形式: 方形(正、侧)  
适用介质: 粉状物质  
适用温度: ≤300℃  
  
Nominal diameter: DN200 ~ 400mm  
Structure: square (front and side)  
Mediums: powdery substance  
Applicable temperature: ≤300℃



**三通溜子**  
Tee liu zi

公称口径: DN200~800mm  
结构形式: 方形(正、侧)  
适用介质: 粉状物质  
适用温度: ≤300℃  
  
Nominal diameter: DN200 ~ 800mm  
Structure: square (front and side)  
Mediums: powdery substance  
Applicable temperature: ≤300℃



**均压放散阀**  
Equalizing relief valve

公称口径: DN100~1400mm  
公称压力: PN0.05~0.25MPa  
适用介质: 煤气及有毒、有害气体  
适用温度: ≤300℃  
  
Nominal diameter: DN100 ~ 1400mm  
Nominal Pressure: PN0.05~0.25MPa  
Medium: Coal gas and toxic and harmful gases  
Applicable temperature: ≤300℃



**DB941WB电动圆形百叶调节蝶阀**  
Electric circular shutter regulating butterfly valve

公称口径: DN500~3600mm  
公称压力: PN0.005MPa  
适用介质: 煤气及有毒、有害气体  
适用温度: ≤350℃  
  
Nominal diameter: DN500 ~ 3600mm  
Nominal Pressure: PN0.005MPa  
Medium: Coal gas and toxic and harmful gases  
Applicable temperature: ≤350℃



**气动钟形卸灰阀**  
Pneumatic bell ash unloading valve

公称口径: DN100~1400mm  
公称压力: PN0.05~0.25MPa  
适用介质: 煤气及有毒、有害气体  
适用温度: ≤300℃  
  
Nominal diameter: DN100 ~ 1400mm  
Nominal Pressure: PN0.05~0.25MPa  
Medium: Coal gas and toxic and harmful gases  
Applicable temperature: ≤300℃



**D41W通风调节蝶阀**  
Ventilation regulating butterfly valve

公称口径: DN100~1400mm  
公称压力: PN0.05~0.25MPa  
适用介质: 煤气及有毒、有害气体  
适用温度: ≤300℃  
  
Nominal diameter: DN100 ~ 1400mm  
Nominal Pressure: PN0.05~0.25MPa  
Medium: Coal gas and toxic and harmful gases  
Applicable temperature: ≤300℃



**电动通风蝶阀**  
Electric ventilation butterfly valve  
公称口径: DN100 ~ 1400mm  
公称压力: PN0.05~0.25MPa  
适用介质: 煤气及有毒、有害气体  
适用温度: ≤300℃  
Nominal diameter: DN100 ~ 1400mm  
Nominal Pressure: PN0.05~0.25MPa  
Medium: Coal gas and toxic and harmful gases  
Applicable temperature: ≤300℃



**电液动空气蝶阀**  
Electro hydraulic pneumatic butterfly valve  
公称口径: DN100 ~ 1400mm  
公称压力: PN0.05~0.25MPa  
适用介质: 煤气及有毒、有害气体  
适用温度: ≤300℃  
Nominal diameter: DN100 ~ 1400mm  
Nominal Pressure: PN0.05~0.25MPa  
Medium: Coal gas and toxic and harmful gases  
Applicable temperature: ≤300℃



**密闭斜插板阀**  
Closed inclined gate valve  
公称口径: DN100 ~ 1400mm  
公称压力: PN0.05~0.25MPa  
适用介质: 煤气及有毒、有害气体  
适用温度: ≤300℃  
Nominal diameter: DN100 ~ 1400mm  
Nominal Pressure: PN0.05~0.25MPa  
Medium: Coal gas and toxic and harmful gases  
Applicable temperature: ≤300℃



**手轮式启闭机**  
Hand wheel hoist  
公称口径: DN100 ~ 1400mm  
公称压力: PN0.05~0.25MPa  
适用介质: 煤气及有毒、有害气体  
适用温度: ≤300℃  
Nominal diameter: DN100 ~ 1400mm  
Nominal Pressure: PN0.05~0.25MPa  
Medium: Coal gas and toxic and harmful gases  
Applicable temperature: ≤300℃



**手摇式启闭机**  
Hand hoist  
公称口径: DN100 ~ 1400mm  
公称压力: PN0.05~0.25MPa  
适用介质: 煤气及有毒、有害气体  
适用温度: ≤300℃  
Nominal diameter: DN100 ~ 1400mm  
Nominal Pressure: PN0.05~0.25MPa  
Medium: Coal gas and toxic and harmful gases  
Applicable temperature: ≤300℃



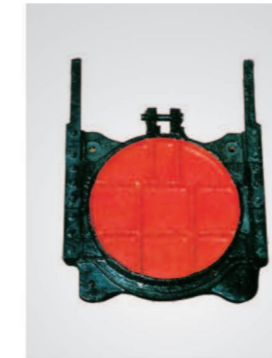
**手电两用启闭机**  
Hand electric hoist  
公称口径: DN300 ~ 2000mm  
公称压力: PN0.01MPa  
适用介质: 煤气及有毒、有害气体  
适用温度: ≤300℃  
Nominal diameter: DN300 ~ 2000mm  
Nominal Pressure: PN0.01MPa  
Medium: Coal gas and toxic and harmful gases  
Applicable temperature: ≤300℃



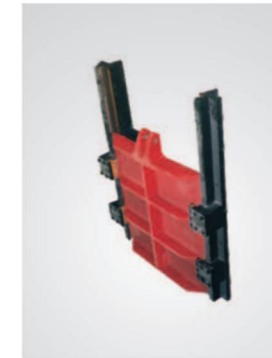
**QS-D手电两用吊点启闭机**  
Flashlight dual-purpose lifting point hoist  
公称口径: DN2200~3000mm  
启闭力: 6~50T  
电机功率: 1.1~7.5KW  
Nominal diameter: DN2200~3000mm  
Hoisting force: 6~50T  
Motor power: 1.1~7.5KW



**XB-42/XB-61泄爆阀**  
Explosion relief valve  
公称口径: DN300~1000mm  
公称压力: PN0.1MPa  
主要材质: 碳钢等  
适用温度: ≤350℃  
Nominal diameter: DN300 ~ 1000mm  
Nominal pressure: PN0.1MPa  
Main material: carbon steel, etc.  
Applicable temperature: ≤350℃



**铸铁镶铜圆闸阀**  
Cast iron copper inlaid round gate valve  
公称口径: DN300 ~ 2500mm  
结构形式: 明杆、暗杆  
适用介质: 污水、清水、海水  
安装形式: 法兰式、靠墙式  
Nominal diameter: DN300 ~ 2500mm  
Structural form: exposed pole and concealed pole  
Mediums: sewage, clean water, sea water  
Installation form: flange type, wall type



**ZMF法兰式铸铁圆闸门**  
Flanged cast iron round gate  
公称口径: 300~2500mm  
结构形式: 法兰式、靠墙式  
适用介质: 清水、污水、海水  
适用温度: ≤60℃  
Nominal diameter: 300~2500mm  
Structure: flange type, wall type  
Mediums: clean water, sewage, sea water  
Applicable temperature: ≤60℃



**TY型铸铁堰门**  
TY cast iron weir gate  
公称口径: 300~2500mm  
结构形式: 法兰式、靠墙式  
适用介质: 清水、污水、海水  
适用温度: ≤60℃  
Nominal diameter: 300~2500mm  
Structure: flange type, wall type  
Mediums: clean water, sewage, sea water  
Applicable temperature: ≤60℃



**冷风阀**  
Cold air valve  
公称口径: DN100 ~ 1400mm  
公称压力: PN0.05~0.25MPa  
适用介质: 煤气及有毒、有害气体  
适用温度: ≤300℃  
Nominal diameter: DN100 ~ 1400mm  
Nominal Pressure: PN0.05~0.25MPa  
Mediums: Coal gas and toxic and harmful gases  
Applicable temperature: ≤300℃



**水冷热风阀**  
Water cooled hot air valve  
公称口径: DN100 ~ 1400mm  
公称压力: PN0.05~0.25MPa  
适用介质: 煤气及有毒、有害气体  
适用温度: ≤300℃  
Nominal diameter: DN100 ~ 1400mm  
Nominal Pressure: PN0.05~0.25MPa  
Mediums: Coal gas and toxic and harmful gases  
Applicable temperature: ≤300℃



**电液动扇形闸阀**  
Electro hydraulic sector gate valve  
公称口径: DN100 ~ 1400mm  
公称压力: PN0.05~0.25MPa  
适用介质: 煤气及有毒、有害气体  
适用温度: ≤300℃  
Nominal diameter: DN100 ~ 1400mm  
Nominal Pressure: PN0.05~0.25MPa  
Mediums: Coal gas and toxic and harmful gases  
Applicable temperature: ≤300℃



**电动扇型闸门**  
Electric sector gate  
公称口径: DN100 ~ 1400mm  
公称压力: PN0.05~0.25MPa  
适用介质: 煤气及有毒、有害气体  
适用温度: ≤300℃  
Nominal diameter: DN100 ~ 1400mm  
Nominal Pressure: PN0.05~0.25MPa  
Mediums: Coal gas and toxic and harmful gases  
Applicable temperature: ≤300℃



**防爆阀**  
Explosion proof valve  
公称口径: DN200 ~ 900mm  
公称压力: PN0.1MPa  
适用介质: 压缩易爆气体  
适用温度: ≤200℃  
Nominal diameter: DN200 ~ 900mm  
Nominal pressure: PN0.1MPa  
Mediums: compressed explosive gas  
Applicable temperature: ≤200℃



**锥形阀**  
Conical valve

公称口径: DN800 ~ 1600mm  
结构形式: 法兰式  
适用介质: 污水、清水、海水  
材质形式: 不锈钢、碳钢  
Nominal diameter: DN800 ~ 1600mm  
Structural form: flange type  
Mediums: sewage, clean water, sea water  
Material type: stainless steel, carbon steel



**ZS3CVB棒条闸门**  
Bar gate

公称口径: DN100 ~ 1400mm  
公称压力: PN0.05~0.25MPa  
适用介质: 煤气及有毒、有害气体  
适用温度: ≤300°C  
Nominal diameter: DN100 ~ 1400mm  
Nominal Pressure: PN0.05~0.25MPa  
Mediums: Coal gas and toxic and harmful gases  
Applicable temperature: ≤300°C



**LZD手动螺旋闸门**  
Manual screw gate

公称口径: DN200~700mm  
主要材质: Q235A、304、316等  
适用温度: ≤200°C  
Nominal diameter: DN200~700mm  
Main material: Q235A, 304, 316, etc.  
Applicable temperature: ≤200°C



**LMD电动螺旋闸门**  
Electric spiral gate

公称口径: DN200~700mm  
主要材质: Q235A、304、316等  
适用温度: ≤200°C  
Nominal diameter: DN200~700mm  
Main material: Q235A, 304, 316, etc.  
Applicable temperature: ≤200°C



**百叶阀**  
Shutter valve

公称口径: DN128x29~2520x1805mm  
公称压力: PN0.05MPa  
主要材质: SS41、SUS304、SUS316  
适用温度: ≤600°C  
Nominal diameter: DN128x29 ~ 2520x1805mm  
Nominal pressure: PN0.05MPa  
Main materials: SS41, SUS304, SUS316  
Applicable temperature: ≤600 °C



**窗式百叶阀**  
Window shutter valve

公称口径: DN128x29~2520x1805mm  
公称压力: PN0.05MPa  
主要材质: SS41、SUS304、SUS316  
适用温度: ≤600°C  
Nominal diameter: DN128x29 ~ 2520x1805mm  
Nominal pressure: PN0.05MPa  
Main materials: SS41, SUS304, SUS316  
Applicable temperature: ≤600 °C



**关闭挡板阀**  
Close the flapper valve

公称口径: DN300~2000mm  
公称压力: 0.1MPa  
适用介质: 空气、烟气  
适用温度: ≤60°C  
Nominal diameter: DN300 ~ 2000mm  
Nominal pressure: 0.1MPa  
Mediums: air, smoke  
Applicable temperature: ≤60 °C



**GDZ固定锥形阀**  
Close the flapper valve

公称口径: DN50~400mm  
公称压力: 1.0~2.5MPa  
适用介质: 水  
适用温度: ≤120°C  
Nominal diameter: DN50~400mm  
Nominal pressure: 1.0~2.5MPa  
Mediums: Water  
Applicable temperature: ≤120°C

# Regulating valve

## series 调节阀系列

全方位管道系统阀门集成解决方案  
Comprehensive pipeline system valve integration solution  
www.jqfm-valve.com





**JZSAQ气动单座调节阀**  
Single-seat pneumatic control valve

公称口径: DN20~400mm  
公称压力: PN1.0~10.0MPa  
适用介质: 水、蒸汽、油品  
适用温度: ≤650℃  
Nominal Diameter: DN20~400mm  
Nominal Pressure: PN1.0~10.0MPa  
Mediums: Water, steam, oil  
Temperature Range: ≤650℃



**JZSHQ气动套筒调节阀**  
Pneumatic sleeve regulating valve

公称口径: DN50~800mm  
公称压力: PN2.5~25.0MPa  
适用介质: 水、蒸汽、油品  
适用温度: ≤650℃  
Nominal Diameter: DN50~800mm  
Nominal Pressure: PN2.5~25.0MPa  
Mediums: Water, steam, oil  
Temperature Range: ≤650℃



**JZSAQ气动薄膜调节阀**  
Pneumatic diaphragm regulating valve

公称口径: DN25~300mm  
公称压力: PN1.0~6.4MPa  
适用介质: 气体、液体  
适用温度: ≤650℃  
Nominal diameter: DN25~300mm  
Nominal Pressure: PN1.0~6.4MPa  
Mediums: Gas, liquid  
Applicable temperature: ≤650℃



**JZQP气动薄膜调节阀**  
Pneumatic diaphragm regulating valve

公称口径: DN25~300mm  
公称压力: PN1.6~6.4MPa  
适用介质: 水、蒸汽、油品  
适用温度: ≤650℃  
Nominal diameter: DN25~300mm  
Nominal Pressure: PN1.6~6.4MPa  
Mediums: Water, steam, oil  
Applicable temperature: ≤650℃



**JZHQ锻造气动调节阀**  
Forged pneumatic control valve

公称口径: DN25~200mm  
公称压力: PN1.0~6.4MPa  
适用介质: 水、蒸汽、油品  
适用温度: ≤650℃  
Nominal diameter: DN25~200mm  
Nominal Pressure: PN1.0~6.4MPa  
Mediums: Water, steam, oil  
Applicable temperature: ≤650℃



**JZSAQ气动薄膜调节阀**  
Pneumatic diaphragm regulating valve

公称口径: DN15~200mm  
公称压力: PN6.4~32MPa  
适用介质: 水、蒸汽、油品  
适用温度: ≤650℃  
Nominal Diameter: DN15~200mm  
Nominal Pressure: PN6.4~32MPa  
Mediums: Water, steam, oil  
Temperature Range: ≤650℃



**JZSAQ气动调节阀**  
Pneumatic control valve

公称口径: DN20~100mm  
公称压力: PN1.6~25MPa  
适用介质: 水、蒸汽、油品  
适用温度: ≤650℃  
Nominal Diameter: DN20~100mm  
Nominal Pressure: PN1.6~25MPa  
Mediums: Water, steam, oil  
Temperature Range: ≤650℃



**JZSHQ气动智能型调节阀**  
Pneumatic intelligent regulating valve

公称口径: DN20~300mm  
公称压力: PN1.6~10.0MPa  
适用介质: 水、蒸汽、油品  
适用温度: ≤650℃  
Nominal Diameter: DN20~300mm  
Nominal Pressure: PN1.6~10.0MPa  
Mediums: Water, steam, oil  
Temperature Range: ≤650℃



**ZMAS型高压角式调节阀**  
High pressure angle regulating valve

公称口径: DN20~300mm  
公称压力: PN1.6~6.4MPa  
适用介质: 水、蒸汽、油品  
适用温度: ≤650℃  
Nominal Diameter: DN20~300mm  
Nominal Pressure: PN1.6~6.4MPa  
Mediums: Water, steam, oil  
Temperature Range: ≤650℃



**ZMQSY气动薄膜Y型疏水阀**  
Pneumatic membrane Y type steam trap

公称口径: DN15~200mm  
公称压力: PN6.4~32MPa  
适用介质: 水、蒸汽、油品  
适用温度: ≤650℃  
Nominal Diameter: DN15~200mm  
Nominal Pressure: PN6.4~32MPa  
Mediums: Water, steam, oil  
Temperature Range: ≤650℃



**ZMBQ/AX气动三通倒流、分流调节阀**  
Pneumatic three way flow back, shunt control valve

公称口径: DN20~300mm  
公称压力: PN1.0~10.0MPa  
适用介质: 水、蒸汽、油品  
适用温度: ≤650℃  
Nominal Diameter: DN20~300mm  
Nominal Pressure: PN1.0~10.0MPa  
Mediums: Water, steam, oil  
Temperature Range: ≤650℃



**T961H/Y给水调节阀**  
Feed water control valve

公称口径: DN15~200mm  
公称压力: PN6.4~32MPa  
适用介质: 水、蒸汽、油品  
适用温度: ≤650℃  
Nominal Diameter: DN15~200mm  
Nominal Pressure: PN6.4~32MPa  
Mediums: Water, steam, oil  
Temperature Range: ≤650℃



**ZJHQ气动薄膜三通调节阀**  
Pneumatic diaphragm three-way regulating valve

公称口径: DN25~300mm  
公称压力: PN1.6~4.0MPa  
适用介质: 水、蒸汽、油品  
适用温度: ≤650℃  
Nominal Diameter: DN25~300mm  
Nominal Pressure: PN1.6~4.0MPa  
Mediums: Water, steam, oil  
Temperature Range: ≤650℃



**ZMQP气动薄膜/活塞切断阀**  
Pneumatic diaphragm / piston shut-off valve

公称口径: DN15~200mm  
公称压力: PN1.0~6.4MPa  
适用介质: 水、蒸汽、油品  
适用温度: ≤650℃  
Nominal Diameter: DN15~200mm  
Nominal Pressure: PN1.0~6.4MPa  
Mediums: Water, steam, oil  
Temperature Range: ≤650℃



**ZJHPF46气动衬氟调节阀**  
Pneumatic fluorine lined regulating valve

公称口径: DN15~300mm  
公称压力: PN1.0~1.6MPa  
适用介质: 水、蒸汽、油品  
适用温度: ≤150℃  
Nominal Diameter: DN15~300mm  
Nominal Pressure: PN1.0~1.6MPa  
Mediums: Water, steam, oil  
Temperature Range: ≤150℃



**DZJHP(M)低温气动调节阀**  
Low temperature pneumatic control valve

公称口径: DN15~100mm  
公称压力: PN1.0~6.4MPa  
适用介质: 水、蒸汽、油品  
适用温度: ≥-196℃  
Nominal Diameter: DN15~100mm  
Nominal Pressure: PN1.0~6.4MPa  
Mediums: Water, steam, oil  
Temperature Range: ≥-196℃



**CV3000单座调节阀**  
Single seat regulating valve

公称口径: DN40~200mm  
公称压力: PN1.6~6.4MPa  
适用介质: 水、蒸汽、油品  
适用温度: ≤650℃  
Nominal Diameter: DN40~200mm  
Nominal Pressure: PN1.6~6.4MPa  
Mediums: Water, steam, oil  
Temperature Range: ≤650℃



**CV3000笼式调节阀**  
Cage regulating valve

公称口径: DN40~200mm  
公称压力: PN1.6~6.4MPa  
适用介质: 水、蒸汽、油品  
适用温度: ≤650℃  
Nominal Diameter: DN40~200mm  
Nominal Pressure: PN1.6~6.4MPa  
Mediums: Water, steam, oil  
Temperature Range: ≤650℃



**Q641 F46气动衬氟调节蝶阀**  
Pneumatic fluorine lined regulating butterfly valve

公称口径: DN50~600mm  
公称压力: PN0.6~1.6MPa  
适用介质: 水、蒸汽、油品  
适用温度: ≤150℃  
Nominal Diameter: DN50~600mm  
Nominal Pressure: PN0.6~1.6MPa  
Mediums: Water, steam, oil  
Temperature Range: ≤150℃



**ZSHV气动活塞式V型球阀**  
Pneumatic piston V-type ball valve

公称口径: DN15~200mm  
公称压力: PN1.6~6.4MPa  
适用介质: 水、蒸汽、油品  
适用温度: ≤650℃  
Nominal Diameter: DN15~200mm  
Nominal Pressure: PN1.6~6.4MPa  
Mediums: Water, steam, oil  
Temperature Range: ≤650℃



**JZSAQ电动调节阀**  
Electric control valve

公称口径: DN25~200mm  
公称压力: PN1.0~6.4MPa  
适用介质: 水、蒸汽、油品  
适用温度: ≤650℃  
Nominal Diameter: DN25~200mm  
Nominal Pressure: PN1.0~6.4MPa  
Mediums: Water, steam, oil  
Temperature Range: ≤650℃



**ZDLP电动调节阀**  
Electric control valve

公称口径: DN20~200mm  
公称压力: PN1.0~6.4MPa  
适用介质: 水、蒸汽、油品  
适用温度: ≤650℃  
Nominal diameter: DN20~200mm  
Nominal Pressure: PN1.0~6.4MPa  
Mediums: Water, steam, oil  
Applicable temperature: ≤650℃



**ZDLM电动套筒调节阀**  
Electric sleeve regulating valve

公称口径: DN25~350mm  
公称压力: PN1.6~10.0MPa  
适用介质: 水、蒸汽、油品  
适用温度: ≤650℃  
Nominal Diameter: DN25~350mm  
Nominal Pressure: PN1.6~10.0MPa  
Mediums: Water, steam, oil  
Temperature Range: ≤650℃



**ZAZM电动套筒调节阀**  
Electric sleeve regulating valve

公称口径: DN25~300mm  
公称压力: PN1.6~6.4MPa  
适用介质: 水、蒸汽、油品  
适用温度: ≤650℃  
Nominal diameter: DN25~300mm  
Nominal Pressure: PN1.6~6.4MPa  
Mediums: Water, steam, oil  
Applicable temperature: ≤650℃



**T967智能调节阀**  
Intelligent control valve

公称口径: DN20~300mm  
公称压力: PN6.4~32MPa  
适用介质: 水、蒸汽、油品  
适用温度: ≤650℃  
Nominal Diameter: DN20~300mm  
Nominal Pressure: PN6.4~32MPa  
Mediums: Water, steam, oil  
Temperature Range: ≤650℃



**WY945H/Y电动双阀座减温减压阀**  
Electric double valve seat temperature reducing and pressure control valve

公称口径: DN40~300mm  
公称压力: PN1.0~16.0MPa  
适用介质: 水、蒸汽、油品  
适用温度: ≤650℃  
Nominal Diameter: DN40~300mm  
Nominal Pressure: PN1.0~16.0MPa  
Mediums: Water, steam, oil  
Temperature Range: ≤650℃



**ZDLQ/X 电动/电子式三通调节阀**  
Electric/electronic three-way regulating valve

公称口径: DN20~250mm  
公称压力: PN1.6~25MPa  
适用介质: 水、蒸汽、油品  
适用温度: ≤650℃  
Nominal Diameter: DN20~250mm  
Nominal Pressure: PN1.6~25MPa  
Mediums: Water, steam, oil  
Temperature Range: ≤650℃



**ZDLP F46 电动衬氟调节阀**  
Electric fluorine lined regulating valve

公称口径: DN20~300mm  
公称压力: PN1.0~1.6MPa  
适用介质: 水、蒸汽、油品  
适用温度: ≤150℃  
Nominal Diameter: DN20~300mm  
Nominal Pressure: PN1.0~1.6MPa  
Mediums: Water, steam, oil  
Temperature Range: ≤150℃



**ZTF-WK自力式温度调节阀**  
Self operated temperature control valve

公称口径: DN20~200mm  
公称压力: PN1.0~10.0MPa  
适用介质: 水、蒸汽、油品  
适用温度: ≤200℃  
Nominal Diameter: DN20~200mm  
Nominal Pressure: PN1.0~10.0MPa  
Mediums: Water, steam, oil  
Temperature Range: ≤200℃



**V231D01自力式压力调节阀**  
Self operated pressure regulating valve

公称口径: DN15~250mm  
公称压力: PN1.0~6.4MPa  
适用介质: 水、蒸汽、油品  
适用温度: ≤650℃  
Nominal diameter: DN15~250mm  
Nominal Pressure: P1.0~6.4MPa  
Mediums: Water, steam, oil  
Applicable temperature: ≤650℃



**ZSPQ型气动活塞快速切断阀**  
ZSPQ pneumatic piston quick cut-off valve

公称口径: DN25~200mm  
公称压力: PN1.0~6.4MPa  
适用介质: 水、蒸汽、油品  
适用温度: ≤650℃  
Nominal Diameter: DN25~200mm  
Nominal Pressure: PN1.0~6.4MPa  
Mediums: Water, steam, oil  
Temperature Range: ≤650℃



**ZZYGZ自力式高压铸造调节阀**  
ZZYGZ self-operated high pressure casting control valve

公称口径: DN20~250mm  
公称压力: PN1.6~25MPa  
适用介质: 水、蒸汽、油品  
适用温度: ≤650℃  
Nominal Diameter: DN20~250mm  
Nominal Pressure: PN1.6~25MPa  
Mediums: Water, steam, oil  
Temperature Range: ≤650℃

# Solenoid valve

## series 电磁阀系列

全方位管道系统阀门集成解决方案  
Comprehensive pipeline system valve integration solution

www.jqfm-valve.com



## 电磁阀系列 Solenoid valve series

全方位管道系统阀门集成解决方案  
Comprehensive pipeline system valve integration solution



**2W水(热水)气常闭电磁阀**  
Water (hot water) gas normally closed solenoid valve

公称口径: DN15~25mm  
公称压力: PN1.0~3.2MPa  
适用介质: 冷水、热水  
适用温度: ≤120℃  
Nominal Diameter: DN15~25mm  
Nominal Pressure: PN1.0~3.2MPa  
Mediums: Cold water, hot water  
Temperature Range: ≤120℃



**2W焊接常温电磁阀**  
Welding normal temperature solenoid valve

公称口径: DN15~50mm  
公称压力: PN1.0~3.2MPa  
适用介质: 水、蒸汽、油品  
适用温度: ≤120℃  
Nominal Diameter: DN15~50mm  
Nominal Pressure: PN1.0~3.2MPa  
Mediums: Water, steam, oil  
Temperature Range: ≤120℃



**ZQDF不锈钢系列电磁阀**  
Stainless steel series solenoid valve

公称口径: DN15~50mm  
公称压力: PN1.0~3.2MPa  
适用介质: 水、蒸汽、油品  
适用温度: ≤120℃  
Nominal Diameter: DN15~50mm  
Nominal Pressure: PN1.0~3.2MPa  
Mediums: Water, steam, oil  
Temperature Range: ≤120℃



**ZBSF全不锈钢电磁阀**  
All stainless steel solenoid valve

公称口径: DN15~50mm  
公称压力: PN1.0~3.2MPa  
适用介质: 水、蒸汽、油品  
适用温度: ≤120℃  
Nominal Diameter: DN15~50mm  
Nominal Pressure: PN1.0~3.2MPa  
Mediums: Water, steam, oil  
Temperature Range: ≤120℃



**2L法兰高温电磁阀**  
Flange high temperature solenoid valve

公称口径: DN15~50mm  
公称压力: PN1.0~3.2MPa  
适用介质: 水、蒸汽、油品  
适用温度: ≤120℃  
Nominal Diameter: DN15~50mm  
Nominal Pressure: PN1.0~3.2MPa  
Mediums: Water, steam, oil  
Temperature Range: ≤120℃



**2W快装式常温电磁阀**  
Quick mounted normal temperature solenoid valve

公称口径: DN15~50mm  
公称压力: PN1.0~3.2MPa  
适用介质: 水、蒸汽、油品  
适用温度: ≤120℃  
Nominal Diameter: DN15~50mm  
Nominal Pressure: PN1.0~3.2MPa  
Mediums: Water, steam, oil  
Temperature Range: ≤120℃



**ZCZP水、气、蒸汽用电磁阀**  
Solenoid valves for water, gas and steam

公称口径: DN20~500mm  
公称压力: PN1.0~3.2MPa  
适用介质: 水、蒸汽、油品  
适用温度: ≤120℃  
Nominal Diameter: DN20~500mm  
Nominal Pressure: PN1.0~3.2MPa  
Mediums: Water, steam, oil  
Temperature Range: ≤120℃



**ZCX消防专用电磁阀**  
Special solenoid valve for fire fighting

公称口径: DN15~500mm  
公称压力: PN1.0~3.2MPa  
适用介质: 水、蒸汽、油品  
适用温度: ≤120℃  
Nominal Diameter: DN15~500mm  
Nominal Pressure: PN1.0~3.2MPa  
Mediums: Water, steam, oil  
Temperature Range: ≤120℃

# Needle valve

## series 针型阀系列

全方位管道系统阀门集成解决方案  
Comprehensive pipeline system valve integration solution

www.jqfm-valve.com



## 针型阀系列 Needle valve series

全方位管道系统阀门集成解决方案  
Comprehensive pipeline system valve integration solution



**JJM1压力表截止阀**  
Pressure gauge shut-off valve

公称口径: DN3~15mm  
公称压力: PN6.4~16MPa  
主要材质: 碳钢、不锈钢等  
适用温度: ≤650℃

Nominal diameter: DN3 ~ 15mm  
Nominal pressure: PN6.4 ~ 16MPa  
Main material: carbon steel,  
stainless steel, etc.  
Applicable temperature: ≤650 °C



**J29W压力表截止阀**  
Pressure gauge shut-off valve

公称口径: DN3~6mm  
公称压力: PN16~32MPa  
主要材质: 碳钢、不锈钢等  
适用温度: ≤650℃

Nominal diameter: DN3 ~ 6mm  
Nominal pressure: PN16 ~ 32MPa  
Main material: carbon steel,  
stainless steel, etc.  
Applicable temperature: ≤650 °C



**J23W/H带接杆针型截止阀**  
Needle type globe valve with post

公称口径: DN6~25mm  
公称压力: PN1.6~32MPa  
主要材质: 碳钢、不锈钢等  
适用温度: ≤650℃

Nominal diameter: DN6 ~ 25mm  
Nominal pressure: PN1.6 ~ 32MPa  
Main material: carbon steel,  
stainless steel, etc.  
Applicable temperature: ≤650 °C



**J13W/H内螺纹针型截止阀**  
Internal thread needle globe valve

公称口径: DN6~25mm  
公称压力: PN1.6~32MPa  
主要材质: 碳钢、不锈钢等  
适用温度: ≤650℃

Nominal diameter: DN6 ~ 25mm  
Nominal pressure: PN1.6 ~ 32MPa  
Main material: carbon steel,  
stainless steel  
Applicable temperature: ≤650 °C



**JJY1(M8)内螺纹针型截止阀**  
Internal thread needle globe valve

公称口径: DN6~25mm  
公称压力: PN1.6~32MPa  
主要材质: 碳钢、不锈钢等  
适用温度: ≤650℃

Nominal diameter: DN6 ~ 25mm  
Nominal pressure: PN1.6 ~ 32MPa  
Main material: carbon steel,  
stainless steel, etc.  
Applicable temperature: ≤650 °C



**J24W外螺纹解式截止阀**  
External thread solution type globe valve

公称口径: DN3~6mm  
公称压力: PN6.4~32MPa  
主要材质: 碳钢、不锈钢等  
适用温度: ≤650℃

Nominal diameter: DN3 ~ 6mm  
Nominal pressure: PN6.4 ~ 32MPa  
Main material: carbon steel,  
stainless steel, etc.  
Applicable temperature: ≤650 °C



**J41H法兰针型阀**  
Flange needle valve

公称口径: DN15~40mm  
公称压力: PN1.0~6.4MPa  
主要材质: 碳钢、不锈钢等  
适用温度: ≤650℃

Nominal diameter: DN15~40mm  
Nominal pressure: PN1.0~6.4MPa  
Main material: carbon steel,  
stainless steel  
Applicable temperature: ≤650 °C



**J61Y高温高压截止阀**  
High temperature and high pressure globe valve

公称口径: DN6~15mm  
公称压力: PN16~32MPa  
主要材质: 碳钢、不锈钢等  
适用温度: ≤650℃

Nominal diameter: DN6 ~ 15mm  
Nominal pressure: PN16 ~ 32MPa  
Main material: carbon steel,  
stainless steel, etc.  
Applicable temperature: ≤650 °C



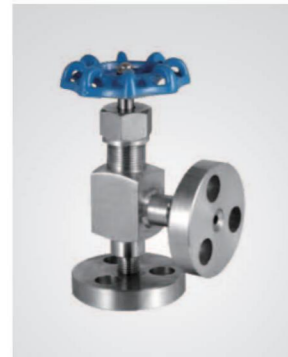
**JJM8针型截止阀**  
Needle globe valve

公称口径: DN5~25mm  
公称压力: PN1.6~16.0MPa  
主要材质: 碳钢、不锈钢  
适用温度: ≤650℃  
Nominal diameter: DN5~25mm  
Nominal pressure: PN1.6~16.0MPa  
Main material: carbon steel, stainless steel  
Applicable temperature: ≤650℃



**J29W/H型压力计截止阀**  
Pressure globe valve

公称口径: DN6~50mm  
公称压力: PN1.6~70Mpa  
适用介质: 水、蒸汽、油品  
适用温度: ≤650℃  
Nominal diameter: DN6~50mm  
Nominal pressure: PN1.6~70Mpa  
Mediums: water, steam, oil  
Applicable temperature: ≤650℃



**J44W针型阀**  
Needle Valve

公称口径: DN6~25mm  
公称压力: PN1.6~32MPa  
适用介质: 水、蒸汽、油品  
适用温度: ≤650℃  
Nominal diameter: DN6~25mm  
Nominal pressure: PN1.6~32MPa  
Mediums: water, steam, oil  
Applicable temperature: ≤650℃



**WJ21F波纹管截止阀**  
Bellows globe valve

公称口径: DN6~25mm  
公称压力: PN1.6~32MPa  
适用介质: 水、蒸汽、油品  
适用温度: ≤150℃  
Nominal diameter: DN6~25mm  
Nominal pressure: PN1.6~32MPa  
Mediums: water, steam, oil  
Applicable temperature: ≤150℃



**JJ-M1型压力表截止阀**  
Pressure gauge stop valve

公称口径: DN6~25mm  
公称压力: PN1.6~25.0MPa  
主要材质: 碳钢、不锈钢等  
适用温度: ≤650℃  
Nominal diameter: DN6~25mm  
Nominal pressure: PN1.6~25.0MPa  
Main material: carbon steel, stainless steel, etc.  
Applicable temperature: ≤650℃



**J23连体形截止阀**  
Connected globe valve

公称口径: DN3~25mm  
公称压力: PN4.0~32.0MPa  
主要材质: 碳钢、不锈钢等  
适用温度: ≤650℃  
Nominal diameter: DN3~25mm  
Nominal pressure: PN4.0~32.0MPa  
Main material: carbon steel, stainless steel, etc.  
Applicable temperature: ≤650℃



**QFF3针型组合阀**  
Needle valve

公称口径: DN5mm  
公称压力: PN1.6~32MPa  
主要材质: 碳钢、不锈钢  
适用温度: ≤650℃  
Nominal diameter: DN5mm  
Nominal pressure: PN1.6~32MPa  
Main material: carbon steel, stainless steel  
Applicable temperature: ≤650℃



**J13W内螺纹截止阀**  
Female Globe Valve

公称口径: DN6~50mm  
公称压力: PN1.6~70Mpa  
适用介质: 水、蒸汽、油品  
适用温度: ≤650℃  
Nominal diameter: DN6~50mm  
Nominal pressure: PN1.6~70Mpa  
Mediums: water, steam, oil  
Applicable temperature: ≤650℃



**J49针形阀**  
Needle Valve

公称口径: DN6~25mm  
公称压力: PN1.6~32MPa  
适用介质: 水、蒸汽、油品  
适用温度: ≤650℃  
Nominal diameter: DN6~25mm  
Nominal pressure: PN1.6~32MPa  
Mediums: water, steam, oil  
Applicable temperature: ≤650℃



**JJBY1取样截止阀**  
Sampling globe valve

公称口径: DN6~50mm  
公称压力: PN1.6~70Mpa  
适用介质: 水、蒸汽、油品  
适用温度: ≤650℃  
Nominal diameter: DN6~50mm  
Nominal pressure: PN1.6~70Mpa  
Mediums: water, steam, oil  
Applicable temperature: ≤650℃



**J14F/H功能取样阀**  
Function sampling valve

公称口径: DN6mm  
公称压力: PN1.6~25.0MPa  
主要材质: 碳钢、不锈钢等  
适用温度: ≤650℃  
Nominal diameter: DN6mm  
Nominal pressure: PN1.6~25.0MPa  
Main material: carbon steel, stainless steel, etc.  
Applicable temperature: ≤650℃



**EF-1二阀组**  
Two valve manifold

公称口径: DN6~50mm  
公称压力: PN1.6~70Mpa  
适用介质: 水、蒸汽、油品  
适用温度: ≤650℃  
Nominal diameter: DN6~50mm  
Nominal pressure: PN1.6~70Mpa  
Mediums: water, steam, oil  
Applicable temperature: ≤650℃



**QFF3三组阀**  
Three sets of valves

公称口径: DN3~25mm  
公称压力: PN4.0~32.0MPa  
主要材质: 碳钢、不锈钢等  
适用温度: ≤650℃  
Nominal diameter: DN3~25mm  
Nominal pressure: PN4.0~32.0MPa  
Main material: carbon steel, stainless steel, etc.  
Applicable temperature: ≤650℃



**3051五阀组**  
Five valve manifold

公称口径: DN6mm  
公称压力: PN1.6~25.0MPa  
主要材质: 碳钢、不锈钢等  
适用温度: ≤650℃  
Nominal diameter: DN6mm  
Nominal pressure: PN1.6~25.0MPa  
Main material: carbon steel, stainless steel, etc.  
Applicable temperature: ≤650℃



**AG-I玻璃管液位计**  
Glass Tube Liquid Level Gauge

公称口径: DN20mm  
公称压力: PN1.6MPa  
适用介质: 水  
适用温度: ≤650℃  
Nominal diameter: DN20mm  
Nominal pressure: PN1.6MPa  
Mediums: water  
Applicable temperature: ≤650℃



**UHZ磁翻板液位计**  
Magnetic flap level gauge

公称口径: DN20~25mm  
公称压力: PN1.6MPa  
适用介质: 水  
适用温度: ≤650℃  
Nominal diameter: DN20~25mm  
Nominal pressure: PN1.6MPa  
Mediums: water  
Applicable temperature: ≤650℃

# Drain valve

## series 疏水阀系列

全方位管道系统阀门集成解决方案  
Comprehensive pipeline system valve integration solution

www.jqfm-valve.com



## 疏水阀系列 Drain valve series

全方位管道系统阀门集成解决方案  
Comprehensive pipeline system valve integration solution



**CS41H自动自由浮球式疏水阀**  
Automatic free floating ball type drain valve

公称口径: DN15~150mm  
公称压力: PN1.6~2.5MPa  
主要材质: 碳钢、不锈钢等  
适用温度: ≤220℃

Nominal diameter: DN15 ~ 150mm  
Nominal pressure: PN1.6 ~ 2.5MPa  
Main material: carbon steel,  
stainless steel, etc.  
Applicable temperature: ≤220 °C



**ER105F/CS45H钟型浮子式疏水阀**  
Bell type float type drain valve

公称口径: DN15~100mm  
公称压力: PN1.6~2.5MPa  
主要材质: 碳钢、不锈钢等  
适用温度: ≤220℃

Nominal diameter: DN15 ~ 100mm  
Nominal pressure: PN1.6 ~ 2.5MPa  
Main material: carbon steel,  
stainless steel, etc.  
Applicable temperature: ≤220 °C



**CS11H自由浮动疏水阀**  
Free floating drain valve

公称口径: DN15~50mm  
公称压力: PN1.6~2.5MPa  
主要材质: 碳钢、不锈钢等  
适用温度: ≤220℃

Nominal diameter: DN15 ~ 50mm  
Nominal pressure: PN1.6 ~ 2.5MPa  
Main material: carbon steel,  
stainless steel, etc.  
Applicable temperature: ≤220 °C



**DT881-885倒吊桶式疏水阀**  
Inverted bucket drain valve

公称口径: DN15~80mm  
公称压力: PN1.6~4.0MPa  
主要材质: 碳钢、不锈钢等  
适用温度: ≤220℃

Nominal diameter: DN15 ~ 80mm  
Nominal pressure: PN1.6 ~ 4.0MPa  
Main material: carbon steel,  
stainless steel, etc.  
Applicable temperature: ≤220 °C



**ER25压差复阀蒸汽疏水阀**  
Pressure difference compound valve steam drain valve

公称口径: DN15~150mm  
公称压力: PN1.6~6.4MPa  
主要材质: 碳钢、不锈钢等  
适用温度: ≤220℃

Nominal diameter: DN15 ~ 150mm  
Nominal pressure: PN1.6 ~ 6.4MPa  
Main material: carbon steel,  
stainless steel, etc.  
Applicable temperature: ≤220 °C



**CS16H热静力膜盒疏水阀**  
Thermo static diaphragm drain valve

公称口径: DN15~100mm  
公称压力: PN1.6~2.5MPa  
主要材质: 碳钢、不锈钢等  
适用温度: ≤220℃

Nominal diameter: DN15 ~ 100mm  
Nominal pressure: PN1.6 ~ 2.5MPa  
Main material: carbon steel,  
stainless steel, etc.  
Applicable temperature: ≤220 °C



**CS14FH/W波纹管式疏水阀**  
Bellows drain valve

公称口径: DN15~50mm  
公称压力: PN1.6~4.0MPa  
适用介质: 蒸汽  
适用温度: ≤220℃

Nominal diameter: DN15 ~ 50mm  
Nominal pressure: PN1.6 ~ 4.0MPa  
Mediums: steam  
Applicable temperature: ≤220 °C



**STB可调恒温式疏水阀**  
Adjustable constant temperature drain valve

公称口径: DN15~150mm  
公称压力: PN1.6~4.0MPa  
主要材质: 碳钢、不锈钢等  
适用温度: ≤220℃

Nominal diameter: DN15 ~ 150mm  
Nominal pressure: PN1.6 ~ 4.0MPa  
Main material: carbon steel,  
stainless steel, etc.  
Applicable temperature: ≤220 °C



**CS11H立式自由浮球式**  
Vertical free floating ball

公称口径: DN15~50mm  
公称压力: PN1.6~4.0MPa  
适用介质: 蒸汽  
适用温度: ≤220℃  
Nominal diameter: DN15 ~ 50mm  
Nominal pressure: PN1.6 ~ 4.0MPa  
Mediums: steam  
Applicable temperature: ≤220 °C



**FT43杠杆浮球式**  
Lever floating ball type

公称口径: DN15~50mm  
公称压力: PN1.6~2.5MPa  
适用介质: 蒸汽  
适用温度: ≤220℃  
Nominal diameter: DN15 ~ 50mm  
Nominal pressure: PN1.6 ~ 2.5MPa  
Mediums: steam  
Applicable temperature: ≤220 °C



**TD42热动力圆盘式**  
Thermal power disc type

公称口径: DN15~50mm  
公称压力: PN1.6~4.0MPa  
适用介质: 凝结水  
适用温度: ≤220℃  
Nominal diameter: DN15 ~ 50mm  
Nominal pressure: PN1.6 ~ 4.0MPa  
Mediums: condensation water  
Applicable temperature: ≤220 °C



**CS19北京式热动力圆盘式**  
Beijing type thermal power disc type

公称口径: DN15~50mm  
公称压力: PN0.6~16.0MPa  
适用介质: 蒸汽、凝结水  
适用温度: ≤220℃  
Nominal diameter: DN15 ~ 50mm  
Nominal pressure: PN0.6 ~ 16.0MPa  
Mediums: steam, condensed water  
Applicable temperature: ≤220 °C



**G3杠杆浮球式**  
Lever floating ball type

公称口径: DN15~150mm  
公称压力: PN1.0~2.5MPa  
主要材质: 洛钼钒钢等  
适用温度: ≤220℃  
Nominal diameter: DN15 ~ 150mm  
Nominal pressure: PN1.0 ~ 2.5MPa  
Main material: Luomo vanadium steel, etc.  
Applicable temperature: ≤220 °C



**CS19Y型热动力圆盘式**  
Thermal power disc type

公称口径: DN15~50mm  
公称压力: PN1.6~2.5MPa  
主要材质: 碳钢、不锈钢等  
适用温度: ≤220℃  
Nominal diameter: DN15 ~ 50mm  
Nominal pressure: PN1.6 ~ 2.5MPa  
Main material: carbon steel, stainless steel, etc.  
Applicable temperature: ≤220 °C



**GSB8杠杆浮球式疏水阀**  
Lever floating ball drain valve

公称口径: DN15 ~ 450mm  
公称压力: PN1.0~3.0MPa  
适用介质: 蒸汽  
适用温度: ≤220℃  
Nominal diameter: DN15 ~ 450mm  
Nominal pressure: PN1.0 ~ 3.0MPa  
Mediums: steam  
Applicable temperature: ≤220 °C



**CS17双金属温调式**  
Bimetallic temperature regulating type

公称口径: DN15~300mm  
公称压力: PN0.01~2.5MPa  
适用介质: 蒸汽  
适用温度: ≤220℃  
Nominal diameter: DN15 ~ 300mm  
Nominal pressure: PN0.01 ~ 2.5MPa  
Mediums: steam  
Applicable temperature: ≤220 °C



**CS49H热动力(圆盘)式疏水阀**  
Thermal power (disc) drain valve

公称口径: DN15~50mm  
公称压力: PN1.6~4.0MPa  
适用介质: 蒸汽  
适用温度: ≤220℃  
Nominal diameter: DN15 ~ 50mm  
Nominal pressure: PN1.6 ~ 4.0MPa  
Mediums: steam  
Applicable temperature: ≤220 °C



**CS17H双金属片式疏水阀**  
Bimetallic drain valve

公称口径: DN15~50mm  
公称压力: PN1.6~2.5MPa  
适用介质: 蒸汽  
适用温度: ≤220℃  
Nominal diameter: DN15 ~ 50mm  
Nominal pressure: PN1.6 ~ 2.5MPa  
Mediums: steam  
Applicable temperature: ≤220 °C



**FT44H杠杆浮球式疏水阀**  
Lever float type drain valve

公称口径: DN15~50mm  
公称压力: PN1.6~4.0MPa  
适用介质: 凝结水  
适用温度: ≤220℃  
Nominal diameter: DN15 ~ 50mm  
Nominal pressure: PN1.6 ~ 4.0MPa  
Mediums: condensation water  
Applicable temperature: ≤220 °C



**HRW150高温高压疏水阀**  
Lever float type drain valve

公称口径: DN15~50mm  
公称压力: PN0.6~16.0MPa  
适用介质: 蒸汽、凝结水  
适用温度: ≤220℃  
Nominal diameter: DN15 ~ 50mm  
Nominal pressure: PN0.6 ~ 16.0MPa  
Mediums: steam, condensed water  
Applicable temperature: ≤220 °C



**HRF150高温高压圆盘式疏水阀**  
High temperature and high pressure disc drain valve

公称口径: DN15~150mm  
公称压力: PN1.0~2.5MPa  
主要材质: 洛钼钒钢等  
适用温度: ≤220℃  
Nominal diameter: DN15 ~ 150mm  
Nominal pressure: PN1.0 ~ 2.5MPa  
Main material: Luomo vanadium steel, etc.  
Applicable temperature: ≤220 °C



**CS19W热动力方式疏水阀**  
Thermal power drain valve

公称口径: DN15~50mm  
公称压力: PN1.6~2.5MPa  
主要材质: 碳钢、不锈钢等  
适用温度: ≤220℃  
Nominal diameter: DN15 ~ 50mm  
Nominal pressure: PN1.6 ~ 2.5MPa  
Main material: carbon steel, stainless steel, etc.  
Applicable temperature: ≤220 °C



**AS汽水分离器**  
Soda separator

公称口径: DN15 ~ 450mm  
公称压力: PN1.0~3.0MPa  
适用介质: 蒸汽  
适用温度: ≤220℃  
Nominal diameter: DN15 ~ 450mm  
Nominal pressure: PN1.0 ~ 3.0MPa  
Mediums: steam  
Applicable temperature: ≤220 °C



**UFS汽水分离器**  
Soda separator

公称口径: DN15~300mm  
公称压力: PN0.01~2.5MPa  
适用介质: 蒸汽  
适用温度: ≤220℃  
Nominal diameter: DN15 ~ 300mm  
Nominal pressure: PN0.01 ~ 2.5MPa  
Mediums: steam  
Applicable temperature: ≤220 °C

# Filter series

## 过滤器系列

全方位管道系统阀门集成解决方案  
Comprehensive pipeline system valve integration solution

www.jqfm-valve.com



## 过滤器系列

Filter series

全方位管道系统阀门集成解决方案  
Comprehensive pipeline system valve integration solution



**Y型过滤器**  
Y Type Filter

公称口径: DN40~1600mm  
公称压力: PN1.0~2.5MPa  
适用介质: 水、蒸汽、酸、碱类  
适用温度: ≤650℃  
Nominal diameter: DN40~1600mm  
Nominal Pressure: PN1.0~2.5MPa  
Mediums: Water, steam, acid, alkali  
Applicable temperature: ≤650 °C



**SBL篮式过滤器**  
Basket filter

公称口径: 2"~20"  
公称压力: 50~900Lb  
适用介质: 水、蒸汽、油品等  
适用温度: ≤650℃  
Nominal diameter: 2"~20"  
Nominal pressure: 50~900Lb  
Mediums: Water, steam, oil, etc.  
Applicable temperature: ≤650 °C



**GL41H Y型过滤器**  
Y-type filter

公称口径: 2"~10"  
公称压力: 50~900Lb  
适用介质: 水、蒸汽、油品、酸碱类  
适用温度: ≤650℃  
Nominal diameter: 2"~10"  
Nominal pressure: 50~900Lb  
Mediums: water, steam, oil, acid and alkali  
Applicable temperature: ≤650 °C



**ZPG-L反冲洗过滤器**  
Backwash filter

公称口径: DN40~1600mm  
公称压力: PN1.6~2.5MPa  
适用介质: 水、蒸汽、油品、污水  
适用温度: ≤650℃  
Nominal diameter: DN40 ~ 1600mm  
Nominal pressure: PN1.6 ~ 2.5MPa  
Mediums: water, steam, oil, sewage  
Applicable temperature: ≤650 °C



**U型过滤器**  
filter

公称口径: DN15 ~ 200mm  
公称压力: PN1.6 ~ 2.5MPa  
适用介质: 水、空气、油品等  
适用温度: ≤650℃  
Nominal diameter: DN15 ~ 200mm  
Nominal pressure: PN1.6 ~ 2.5MPa  
Mediums: water, air, oil, etc.  
Applicable temperature: ≤650 °C



**GL61H焊接过滤器**  
Welding filter

公称口径: 2"~10"  
公称压力: 50~300Lb  
适用介质: 水、蒸汽  
适用温度: ≤650℃  
Nominal diameter: 2"~10"  
Nominal Pressure: 50~300Lb  
Mediums: Water, steam  
Applicable temperature: ≤650 °C



**桶型自动反冲洗过滤器**  
Bucket-type Automatic Backwash Filter

公称口径: DN50~800mm  
公称压力: PN1.0~1.6MPa  
适用介质: 水、蒸汽  
适用温度: ≤80℃  
Nominal diameter: DN50~800mm  
Nominal Pressure: PN1.0~1.6MPa  
Mediums: Water, steam  
Applicable temperature: ≤80 °C



**双桶切换过滤器**  
Double Barrel Switching Filter

公称口径: DN100~250mm  
公称压力: PN1.6MPa  
适用介质: 水、油品、气体  
适用温度: ≤150℃  
Nominal diameter: DN100~250mm  
Nominal Pressure: PN1.6MPa  
Mediums: Water, oil, gas  
Applicable temperature: ≤150 °C

# Pressure reducing valve series 减压阀系列

全方位管道系统阀门集成解决方案  
Comprehensive pipeline system valve integration solution

www.jqfm-valve.com



## 减压阀系列 Pressure reducing valve series

全方位管道系统阀门集成解决方案  
Comprehensive pipeline system valve integration solution



**Y43H蒸汽减压阀**  
Steam pressure reducing valve  
公称口径: DN15~400mm  
公称压力: PN1.0~6.4MPa  
适用介质: 氮气、空气、蒸汽  
适用温度: ≤650℃  
Nominal diameter: DN15 ~ 400mm  
Nominal pressure: PN1.0 ~ 6.4MPa  
Mediums: Nitrogen, air, steam  
Applicable temperature: ≤650℃



**Y42X膜片式减压阀**  
Diaphragm pressure reducing valve  
公称口径: DN20~400mm  
公称压力: PN1.0~6.4MPa  
适用介质: 水、空气  
适用温度: ≤90℃  
Nominal diameter: DN20 ~ 400mm  
Nominal pressure: PN1.0 ~ 6.4MPa  
Mediums: Water, air  
Applicable temperature: ≤90℃



**YK43F/X气体减压阀**  
Gas pressure reducing valve  
公称口径: DN15~500mm  
公称压力: PN1.6~16.0MPa  
适用介质: 空气、氮气、氢气、氧气  
适用温度: ≤200℃  
Nominal diameter: DN15 ~ 500mm  
Nominal pressure: PN1.6 ~ 16.0MPa  
Mediums: air, nitrogen, hydrogen, oxygen  
Applicable temperature: ≤200℃



**YB43X固定比例式减压阀**  
Fixed proportional pressure reducing valve  
公称口径: DN25~200mm  
公称压力: PN1.0~4.0MPa  
适用介质: 水  
适用温度: ≤80℃  
Nominal diameter: DN25 ~ 200mm  
Nominal pressure: PN1.0 ~ 4.0MPa  
Mediums: Water  
Applicable temperature: ≤80℃



**Y44H/Y波纹管减压阀**  
Bellows pressure reducing valve  
公称口径: DN15~100mm  
公称压力: PN1.0~1.6MPa  
适用介质: 空气、氮气  
适用温度: ≤180℃  
Nominal diameter: DN15 ~ 100mm  
Nominal pressure: PN1.0 ~ 1.6MPa  
Mediums: air, nitrogen  
Applicable temperature: ≤180℃



**YD高灵敏度减压阀**  
High sensitivity pressure reducing valve  
公称口径: DN15~100mm  
公称压力: PN1.0~1.6MPa  
适用介质: 空气、氮气  
适用温度: ≤180℃  
Nominal diameter: DN15 ~ 100mm  
Nominal pressure: PN1.0 ~ 1.6MPa  
Mediums: air, nitrogen  
Applicable temperature: ≤180℃



**YZ11X不锈钢支管减压阀**  
Stainless steel pipe pressure reducing valve  
公称口径: DN15~50mm  
公称压力: PN1.6~2.5MPa  
适用介质: 水  
适用温度: ≤180℃  
Nominal diameter: DN15 ~ 50mm  
Nominal pressure: PN1.6 ~ 2.5MPa  
Mediums: water  
Applicable temperature: ≤180℃



**200P减压阀**  
Pressure reducing valve  
公称口径: DN15~25mm  
公称压力: PN1.6MPa  
适用介质: 水  
适用温度: ≤180℃  
Nominal diameter: DN15 ~ 25mm  
Nominal pressure: PN1.6MPa  
Mediums: water  
Applicable temperature: ≤180℃

# Screw valve

## series 丝扣阀门系列

全方位管道系统阀门集成解决方案  
Comprehensive pipeline system valve integration solution

www.jqfm-valve.com



## 丝扣阀门系列

Screw valve series

全方位管道系统阀门集成解决方案  
Comprehensive pipeline system valve integration solution



**Z15W** 不锈钢丝扣闸阀  
Stainless steel threaded gate valve

公称口径: 1/2"~2"  
公称压力: 150~600Lb  
适用介质: 水、气、油品等  
适用温度: ≤650°C  
Nominal diameter: 1/2"~2"  
Nominal pressure: 150~600Lb  
Mediums: water, gas, oil, etc.  
Applicable temperature: ≤650°C



**J11W** 不锈钢丝扣截止阀  
Stainless steel threaded globe valve

公称口径: DN15~50mm  
公称压力: PN1.0~1.6MPa  
适用介质: 水、气、油品等  
适用温度: ≤650°C  
Nominal diameter: DN15~50mm  
Nominal pressure: PN1.0~1.6MPa  
Mediums: water, gas, oil, etc.  
Applicable temperature: ≤650°C



**J11W** 美标内螺纹截止阀  
API Internal thread globe valve

公称口径: 1/2"~2"  
公称压力: 150~600Lb  
适用介质: 水、气、油品等  
适用温度: ≤650°C  
Nominal diameter: 1/2"~2"  
Nominal pressure: 150~600Lb  
Mediums: water, gas, oil, etc.  
Applicable temperature: ≤650°C



**Q11F** 一片式球阀  
One-piece ball valve

公称口径: 1/2"~2"  
公称压力: 150~600Lb  
适用介质: 水、气、油品等  
适用温度: ≤650°C  
Nominal diameter: 1/2"~2"  
Nominal pressure: 150~600Lb  
Mediums: water, gas, oil, etc.  
Applicable temperature: ≤650°C



**Q11W** 二片式球阀  
Two-piece ball valve

公称口径: 1/2"~2"  
公称压力: 150~600Lb  
适用介质: 水、气、油品等  
适用温度: ≤650°C  
Nominal diameter: 1/2"~2"  
Nominal pressure: 150~600Lb  
Mediums: water, gas, oil, etc.  
Applicable temperature: ≤650°C



**Q11F** 三片式球阀  
Three-piece ball valve

公称口径: 1/2"~2"  
公称压力: 150~600Lb  
适用介质: 水、气、油品等  
适用温度: ≤650°C  
Nominal diameter: 1/2"~2"  
Nominal pressure: 150~600Lb  
Mediums: water, gas, oil, etc.  
Applicable temperature: ≤650°C



**Q14F** 内螺纹三通球阀  
Internal thread three-way ball valve

公称口径: 1/2"~2"  
公称压力: 150~600Lb  
适用介质: 水、气、油品等  
适用温度: ≤650°C  
Nominal diameter: 1/2"~2"  
Nominal pressure: 150~600Lb  
Mediums: water, gas, oil, etc.  
Applicable temperature: ≤650°C



**Q21F** 不锈钢广式内螺纹球阀  
Stainless steel wide internal thread ball valve

公称口径: DN6~50mm  
公称压力: PN1.6~4.0MPa  
主要材质: 碳钢、不锈钢等  
适用温度: ≤150°C  
Nominal diameter: DN6~50mm  
Nominal pressure: PN1.6~4.0MPa  
Mediums: carbon steel, stainless steel, etc.  
Applicable temperature: ≤150°C



**一片式六角内螺纹球阀**  
1PC Hex internal thread ball valve

公称口径: DN15~DN50mm  
公称压力: PN1.6~2.5MPa  
适用介质: 水、气、油品等  
适用温度: ≤ 650 °C  
Nominal diameter: DN15 ~ DN50mm  
Nominal pressure: PN1.6 ~ 2.5MPa  
Mediums: water, gas, oil, etc.  
Applicable temperature: ≤ 650 °C



**二片式双外螺纹球阀**  
2PC Double external thread ball valve

公称口径: DN15~DN50mm  
公称压力: PN1.6~2.5MPa  
适用介质: 水、气、油品等  
适用温度: ≤ 650 °C  
Nominal diameter: DN15 ~ DN50mm  
Nominal pressure: PN1.6 ~ 2.5MPa  
Mediums: water, gas, oil, etc.  
Applicable temperature: ≤ 650 °C



**二片式内外螺纹球阀**  
2PC Internal and external thread ball valve

公称口径: DN15~100mm  
公称压力: PN1.6~6.4MPa  
适用介质: 水、气、油品等  
适用温度: ≤ 650 °C  
Nominal diameter: DN15~100mm  
Nominal pressure: PN1.6~6.4MPa  
Mediums: water, gas, oil, etc.  
Applicable temperature: ≤ 650 °C



**二片式高平台内螺纹球阀**  
2PC high platform internal thread ball valve

公称口径: DN15~50mm  
公称压力: PN1.0~1.6MPa  
适用介质: 水、蒸汽  
适用温度: ≤ 650 °C  
Nominal diameter: DN15~50mm  
Nominal pressure: PN1.0~1.6MPa  
Mediums: water, steam  
Applicable temperature: ≤ 650 °C



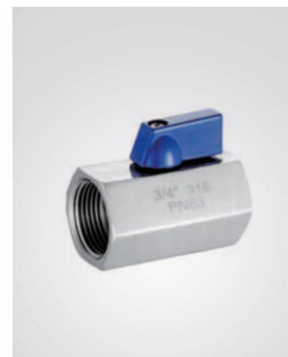
**三片式内螺纹高平台球阀**  
3PC Internal thread high platform ball valve

公称口径: DN15~50mm  
公称压力: PN150~600Lb  
适用介质: 水、蒸汽、油品  
适用温度: ≤ 650 °C  
Nominal diameter: DN15 ~ 50mm  
Nominal pressure: PN150 ~ 600Lb  
Mediums: water, steam, oil  
Applicable temperature: ≤ 650 °C



**三片式加长对焊球阀**  
3PC Ball valve long butt weld

公称口径: DN15~DN65mm  
公称压力: PN1.6~6.4MPa  
适用介质: 水、蒸汽、油品等  
适用温度: ≤ 650 °C  
Nominal diameter: DN15 ~ DN65mm  
Nominal pressure: PN1.6 ~ 6.4MPa  
Mediums: water, steam, oil, etc.  
Applicable temperature: ≤ 650 °C



**迷你球阀**  
Mini ball valve

公称口径: DN15~50mm  
公称压力: PN1.0~2.5MPa  
适用介质: 水、蒸汽、油品等  
适用温度: ≤ 650 °C  
Nominal diameter: DN15~50mm  
Nominal pressure: PN1.0~2.5MPa  
Mediums: water, steam, oil, etc.  
Applicable temperature: ≤ 650 °C



**两片式丝口复位球阀**  
2PC Wire opening ball valve

公称口径: DN10~60mm  
公称压力: PN1.0~1.6MPa  
适用介质: 水、液体、水蒸气  
适用温度: ≤ 650 °C  
Nominal diameter: DN10~60mm  
Nominal pressure: PN1.0~1.6MPa  
Mediums: Water, liquid, steam  
Applicable temperature: ≤ 650 °C



**Q611F/Y气动丝扣球阀**  
Pneumatic screw ball valve

公称口径: DN15~50mm  
公称压力: PN1.6~2.5MPa  
适用介质: 水、气、油品等  
适用温度: ≤ 650 °C  
Nominal diameter: DN15 ~ 50mm  
Nominal pressure: PN1.6 ~ 2.5MPa  
Mediums: water, gas, oil, etc.  
Applicable temperature: ≤ 650 °C



**Q911F/Y电动丝扣球阀**  
Pneumatic screw ball valve

公称口径: DN15~50mm  
公称压力: PN1.6~2.5MPa  
适用介质: 水、气、油品等  
适用温度: ≤ 650 °C  
Nominal diameter: DN15~50mm  
Nominal pressure: PN1.6~2.5MPa  
Mediums: water, gas, oil, etc.  
Applicable temperature: ≤ 650 °C



**Q614F/Y气动三通内螺纹球阀**  
Pneumatic three-way internal thread ball valve

公称口径: DN15~100mm  
公称压力: PN1.6~6.4MPa  
适用介质: 水、气、油品等  
适用温度: ≤ 650 °C  
Nominal diameter: DN15 ~ 100mm  
Nominal pressure: PN1.6~6.4MPa  
Mediums: water, gas, oil, etc.  
Applicable temperature: ≤ 650 °C



**H11W二片式丝扣立式止回阀**  
Two-piece threaded check valve

公称口径: DN15~50mm  
公称压力: PN1.0~1.6MPa  
适用介质: 水、蒸汽  
适用温度: ≤ 650 °C  
Nominal diameter: DN15 ~ 50mm  
Nominal pressure: PN1.0 ~ 1.6MPa  
Mediums: water, steam  
Applicable temperature: ≤ 650 °C



**H14W不锈钢丝扣止回阀**  
Stainless steel wire clasp check valve

公称口径: DN15~50mm  
公称压力: PN150~600Lb  
适用介质: 水、蒸汽、油品  
适用温度: ≤ 650 °C  
Nominal diameter: DN15 ~ 50mm  
Nominal pressure: PN150 ~ 600Lb  
Mediums: water, steam, oil  
Applicable temperature: ≤ 650 °C



**H11W不锈钢内螺纹止回阀**  
Stainless steel internal thread check valve

公称口径: DN15~65mm  
公称压力: PN1.6~6.4MPa  
适用介质: 水、蒸汽、油品等  
适用温度: ≤ 650 °C  
Nominal diameter: DN15 ~ 65mm  
Nominal pressure: PN1.6 ~ 6.4MPa  
Mediums: water, steam, oil, etc.  
Applicable temperature: ≤ 650 °C



**SY11C Y型丝扣过滤器**  
Y-type screw filter

公称口径: DN15~50mm  
公称压力: PN1.0~2.5MPa  
适用介质: 水、蒸汽、油品等  
适用温度: ≤ 650 °C  
Nominal diameter: DN15 ~ 50mm  
Nominal pressure: PN1.0~2.5MPa  
Mediums: water, steam, oil, etc.  
Applicable temperature: ≤ 650 °C



**Y型螺纹式气动角座阀**  
Y-type threaded pneumatic angle seat valve

公称口径: DN10~60mm  
公称压力: PN1.0~1.6MPa  
适用介质: 水、液体、水蒸气  
适用温度: ≤ 650 °C  
Nominal diameter: DN10~60mm  
Nominal pressure: PN1.0~1.6MPa  
Mediums: Water, liquid, steam  
Applicable temperature: ≤ 650 °C

# Fluorine lined valve series 衬氟阀门系列

全方位管道系统阀门集成解决方案  
Comprehensive pipeline system valve integration solution

www.jqfm-valve.com



## 衬氟阀门系列 Fluorine lined valve series

全方位管道系统阀门集成解决方案  
Comprehensive pipeline system valve integration solution



**G41F4衬氟隔膜阀**  
Sampling globe valve

公称口径: DN15~400mm  
公称压力: PN0.6~1.6MPa  
适用介质: 各种腐蚀性介质  
适用温度: ≤150℃  
Nominal diameter: DN15 ~ 400mm  
Nominal pressure: PN0.6 ~ 1.6MPa  
Mediums: Various corrosive media  
Applicable temperature: ≤150 °C



**FQ41F4衬四氟放料球阀**  
PTFE lined ball valve

公称口径: DN15~200mm  
公称压力: PN0.6~2.5MPa  
适用介质: 各种腐蚀性介质  
适用温度: ≤150℃  
Nominal diameter: DN15 ~ 200mm  
Nominal pressure: PN0.6 ~ 2.5MPa  
Mediums: Various corrosive media  
Applicable temperature: ≤150 °C



**Q41F4衬氟法兰球阀**  
Fluorine-lined flange ball valve

公称口径: DN15~450mm  
公称压力: PN0.6~1.6MPa  
适用介质: 各种腐蚀性介质  
适用温度: ≤150℃  
Nominal diameter: DN15~450mm  
Nominal pressure: PN0.6~1.6MPa  
Mediums: Various corrosive media  
Applicable temperature: ≤150 °C



**Q41F46-16C衬氟高平台球阀**  
Lined FEP high platform ball valve

公称口径: DN50~500mm  
公称压力: PN1.0~1.6MPa  
适用介质: 各种腐蚀性介质  
适用温度: ≤150℃  
Nominal diameter: DN50~500mm  
Nominal pressure: PN1.0~1.6MPa  
Mediums: Various corrosive media  
Applicable temperature: ≤150 °C



**Q41F4衬氟不锈钢法兰球阀**  
Fluorine lined stainless steel flange ball valve

公称口径: DN15~450mm  
公称压力: PN0.6~1.6MPa  
适用介质: 各种腐蚀性介质  
适用温度: ≤150℃  
Nominal diameter: DN15~450mm  
Nominal pressure: PN0.6 ~ 1.6MPa  
Mediums: Various corrosive media  
Applicable temperature: ≤150 °C



**VQ41F46衬氟V形球阀**  
Lined FEP V shape ball valve

公称口径: DN40~150mm  
公称压力: PN1.0~1.6MPa  
适用介质: 各种腐蚀性介质  
适用温度: ≤150℃  
Nominal diameter: DN40 ~ 150mm  
Nominal pressure: PN1.0 ~ 1.6MPa  
Mediums: Various corrosive media  
Applicable temperature: ≤150 °C



**H41F46衬氟止回阀**  
Fluorine-lined check valve

公称口径: DN15~350mm  
公称压力: PN0.6~1.6MPa  
适用介质: 各种腐蚀性介质  
适用温度: ≤150℃  
Nominal diameter: DN15 ~ 350mm  
Nominal pressure: PN0.6 ~ 1.6MPa  
Mediums: Various corrosive media  
Applicable temperature: ≤150 °C



**H74F46衬氟薄型止回阀**  
Fluorine lined thin check valve

公称口径: DN15~350mm  
公称压力: PN0.6~1.6MPa  
适用介质: 各种腐蚀性介质  
适用温度: ≤150℃  
Nominal diameter: DN15 ~ 350mm  
Nominal pressure: PN0.6 ~ 1.6MPa  
Mediums: Various corrosive media  
Applicable temperature: ≤150 °C



**H40F46衬氟止回阀**  
Fluorine-lined check valve

公称口径: DN25~400mm  
公称压力: PN0.6~1.6MPa  
适用介质: 各种腐蚀性介质  
适用温度: ≤150℃  
Nominal diameter: DN25 ~ 400mm  
Nominal pressure: PN0.6 ~ 1.6MPa  
Mediums: Various corrosive media  
Applicable temperature: ≤150 °C



**H42F46衬氟立式止回阀**  
Fluorine lined vertical check valve

公称口径: DN25~400mm  
公称压力: PN0.6~1.6MPa  
适用介质: 各种腐蚀性介质  
适用温度: ≤150℃  
Nominal diameter: DN25 ~ 400mm  
Nominal pressure: PN0.6 ~ 1.6MPa  
Mediums: Various corrosive media  
Applicable temperature: ≤150 °C



**X43F4-16C衬氟旋塞阀**  
Fluorine lined plug valve

公称口径: DN50~DN1000  
公称压力: 0.6MPa~1.6MPa  
适用介质: 各种腐蚀性介质  
适用温度: ≤150℃  
Nominal diameter: DN50~DN1000  
Nominal pressure: 0.6MPa~1.6MPa  
Mediums: Various corrosive media  
Applicable temperature: ≤150 °C



**J41F4衬氟法兰截止阀**  
Fluorine-lined flange globe valve

公称口径: DN15~300mm  
公称压力: PN0.6~1.6MPa  
适用介质: 各种腐蚀性介质  
适用温度: ≤150℃  
Nominal diameter: DN15 ~ 300mm  
Nominal pressure: PN0.6 ~ 1.6MPa  
Mediums: Various corrosive media  
Applicable temperature: ≤150 °C



**J41F4衬氟截止阀(角式)**  
Fluorine-lined globe valve (angle type)

公称口径: DN15~300mm  
公称压力: PN0.6~1.6MPa  
适用介质: 各种腐蚀性介质  
适用温度: ≤150℃  
Nominal diameter: DN15 ~ 300mm  
Nominal pressure: PN0.6 ~ 1.6MPa  
Mediums: Various corrosive media  
Applicable temperature: ≤150 °C



**Z41F46衬氟闸阀**  
No pin rubber lined Wafer Butterfly valve

公称口径: DN15~500mm  
公称压力: PN0.6~1.6MPa  
适用介质: 各种腐蚀性介质  
适用温度: ≤150℃  
Nominal diameter: DN15 ~ 500mm  
Nominal pressure: PN0.6 ~ 1.6MPa  
Mediums: Various corrosive media  
Applicable temperature: ≤150 °C



**LTD371F4全衬氟凸耳式对夹蜗轮蝶阀**  
Fully lined fluorine lug type wafer worm gear butterfly valve

公称口径: DN50~1000mm  
公称压力: PN0.6~1.6MPa  
适用介质: 各种腐蚀性介质  
适用温度: ≤150℃  
Nominal diameter: DN50 ~ 1000mm  
Nominal pressure: PN0.6 ~ 1.6MPa  
Mediums: Various corrosive media  
Applicable temperature: ≤150 °C



**D371F全四氟对夹蝶阀**  
All PTFE clip on butterfly valve

公称口径: DN50~500mm  
公称压力: PN1.0~1.6MPa  
适用介质: 各种腐蚀性介质  
适用温度: ≤150℃  
Nominal diameter: DN50 ~ 500mm  
Nominal pressure: PN1.0 ~ 1.6MPa  
Mediums: Various corrosive media  
Applicable temperature: ≤150 °C



**WD371F无销四氟覆层对夹蝶阀**  
No pin PTFE coatings clip on butterfly valve

公称口径: DN40~150mm  
公称压力: PN1.0~1.6MPa  
适用介质: 各种腐蚀性介质  
适用温度: ≤150℃  
Nominal diameter: DN40 ~ 150mm  
Nominal pressure: PN1.0 ~ 1.6MPa  
Mediums: Various corrosive media  
Applicable temperature: ≤150 °C



**D341F46法兰衬氟蝶阀**  
Flange-lined butterfly valve

公称口径: DN50~1000mm  
公称压力: PN0.6~1.6MPa  
适用介质: 各种腐蚀性介质  
适用温度: ≤150℃  
Nominal diameter: DN50 ~ 1000mm  
Nominal pressure: PN0.6 ~ 1.6MPa  
Mediums: Various corrosive media  
Applicable temperature: ≤150 °C



**D971F4全衬四氟电动蝶阀**  
Fully lined PTFE electric butterfly valve

公称口径: DN50~1000mm  
公称压力: PN1.0~1.6MPa  
适用介质: 各种腐蚀性介质  
适用温度: ≤150℃  
Nominal diameter: DN50 ~ 1000mm  
Nominal pressure: PN1.0 ~ 1.6MPa  
Applicable media: Various corrosive media  
Applicable temperature: ≤150 °C



**D671F4全衬四氟气动蝶阀**  
Fully lined PTFE pneumatic butterfly valve

公称口径: DN50~1000mm  
公称压力: PN1.0~1.6MPa  
适用介质: 各种腐蚀性介质  
适用温度: ≤150℃  
Nominal diameter: DN50 ~ 1000mm  
Nominal pressure: PN1.0 ~ 1.6MPa  
Mediums: Various corrosive media  
Applicable temperature: ≤150 °C



**Q641F46衬氟气动球阀**  
Fluorine lined pneumatic ball valve

公称口径: DN50~1000mm  
公称压力: PN1.0~1.6MPa  
适用介质: 各种腐蚀性介质  
适用温度: ≤150℃  
Nominal diameter: DN50 ~ 1000mm  
Nominal pressure: PN1.0 ~ 1.6MPa  
Mediums: Various corrosive media  
Applicable temperature: ≤150 °C



**Q941F46衬氟电动球阀**  
Fluorine lined electric ball valve

公称口径: DN50~1000mm  
公称压力: PN1.0~1.6MPa  
适用介质: 各种腐蚀性介质  
适用温度: ≤150℃  
Nominal diameter: DN50 ~ 1000mm  
Nominal pressure: PN1.0 ~ 1.6MPa  
Mediums: Various corrosive media  
Applicable temperature: ≤150 °C



**HGS07F4-10C衬氟视镜**  
Fluoroscopy cup

公称口径: DN15~200mm  
公称压力: PN0.6~1.6MPa  
适用介质: 各种腐蚀性介质  
适用温度: ≤150℃  
Nominal diameter: DN15 ~ 200mm  
Nominal pressure: PN0.6 ~ 1.6MPa  
Mediums: Various corrosive media  
Applicable temperature: ≤150 °C



**HGS07F4-10C衬氟视镜**  
Fluorine lining mirror

公称口径: DN15~200mm  
公称压力: PN0.6~2.5MPa  
适用介质: 各种腐蚀性介质  
适用温度: ≤150℃  
Nominal diameter: DN15 ~ 200mm  
Nominal pressure: PN0.6~2.5MPa  
Mediums: Various corrosive media  
Applicable temperature: ≤150 °C

Based in  
**Shanghai**  
and going to the  
**World**  
立足上海 走向世界

殷切期待您能与剑桥阀业集团  
有限公司愉快交流合作!

We sincerely look forward to your pleasant exchange  
And cooperation with jianqiao valve group co., ltd!

## 宗旨与服务

Purpose and service

客户是企业的生命所在，没有满意的客户就没有企业的发展前途。

### 剑桥经营宗旨

- 一、公司遵循“持续的质量改进是企业永恒的目标”的经营理念。
- 二、本公司所生产产品均严格实施和达到企业标准和国家机械部阀门标准。
- 三、本公司接到客户定单通知后，严格按照合同条款的有关规定进行发货，按照客户要求的时间，地点送达并保证产品完好无损。

### 剑桥十大品牌承诺

- 一、壳体壁厚达到和超过国家GB、美国ANSI等标准要求。
- 二、主体材质化学成份和力学性能达到国家规定标准要求(保存材质化验报告，提供试棒及力学性能报告)。
- 三、阀杆材质化学成份达到国家规定要求，光洁度达到国家标准要求，表面经抗蚀性氮化或调质处理，保证阀杆力学性能。
- 四、公差尺寸符合国家GB1800-1804标准要求，零部件通配互换。
- 五、阀门承压件每台都进行无损探伤检验、保证符合JB/T6440X射线检验标准、JB/T6439磁粉探伤检验标准和JB/T6903超声波检验标准。
- 六、密封阀座结构采用:分离式螺纹阀座和分离式镶嵌焊接阀座。上密封采用分离式螺纹阀座。
- 七、密封面采用等离子堆焊，硬度达到国家GB/T12234-12236标准要求，宽度超过国家标准，电站阀门密封面都经过着色探伤，检验符合JB/T6902标准要求。
- 八、整机装配前用煤油和防锈油经高压喷射清洗，试压后清除试验介质，喷上防锈油，腔清洁度达到JB/T7748标准要求，符合阀门长期储存要求。
- 九、公司如特殊原因不能按期交货，则按合同订货总金额的5%计算处罚违约金。
- 十、客户提货后在18个月内，因产品制造质量问题而导致密封试压不合格，公司保证包换、包退并且承担运费。


Customers are the life of an enterprise. Without satisfied customers, there is no future for the development of an enterprise.

### Jianqiao business purpose

- 1、The company follows the business philosophy of "continuous quality improvement is the eternal goal of the enterprise".
- 2、The products produced by the company strictly implement and meet the enterprise standards and the valve standards of the Ministry of machinery of the people's Republic of China.
- 3、After receiving the customer's order notice, the company will deliver the goods in strict accordance with the relevant provisions of the contract terms, deliver the goods at the time and place required by the customer, and ensure that the products are intact.

### Jianqiao top ten brand commitment

- 1、The shell wall thickness meets and exceeds the requirements of national GB, American ANSI and other standards.
- 2、The chemical composition and mechanical properties of the main material meet the requirements of national standards (save the material test report, and provide the test bar and mechanical property report).
- 3、The chemical composition of the valve stem material meets the requirements of national regulations, the finish meets the requirements of national standards, and the surface is subject to corrosion-resistant nitriding or quenching and tempering treatment to ensure the mechanical properties of the valve stem.
- 4、The tolerance dimension meets the requirements of national GB1800-1804 standard, and the parts are interchangeable.
- 5、Each pressure bearing part of the valve shall be subject to nondestructive testing to ensure that it meets JB/T6440 X-ray inspection standard, JB/T6439 magnetic particle inspection standard and JB/T6903 ultrasonic inspection standard Wave inspection standard.
- 6、The structure of sealing valve seat adopts: separate threaded valve seat and separate inlay welded valve seat. The upper seal adopts separate threaded valve seat.
- 7、The sealing surface adopts plasma surfacing, the hardness meets the requirements of national GB/T12234-12236 standard, and the width exceeds the national standard. The sealing surface of power station valves has undergone dye detection, The inspection meets the requirements of JB/T6902 standard.
- 8、Before the assembly of the whole machine, kerosene and antirust oil are used for high-pressure jet cleaning. After the pressure test, the test medium is removed and antirust oil is sprayed. The cleanliness of the chamber meets the requirements of JB/T7748 standard and meets the requirements of the valve Requirements for long-term storage of doors.
- 9、If the company fails to deliver the goods on schedule for special reasons, it will be punished by 5% of the total contract order amount.
- 10、Within 18 months after the customer picks up the goods, if the sealing pressure test is unqualified due to product manufacturing quality problems, the company guarantees to replace, return and bear the freight.



辐射全国、放眼世界；共同发展，共创双赢；  
全心全意，为用户服务。

To cover in the country and look around the world, to  
develop together and create win-win situation.  
To serve the users with whole heart and soul.

全方位管道系统阀门集成解决方案

Comprehensive pipeline system  
valve integration solution



## 经营理念

Management idea

诚信、创新、安全、高效是剑桥阀业集团经营理念的基础。它们分别代表着剑桥阀业集团“面向员工的经营哲学，面向顾客的经营哲学，面向人类和社会的经营哲学。”剑桥阀业集团愿凭借“诚信、创新、安全与高效”，为员工提供一个温馨舒适的工作环境；为客户提供超过客户满意度的优质产品和一流服务；为人类和社会的发展添砖加瓦，增添光彩。

Integrity, innovation, safety and efficiency are the basis of the business philosophy of Jianqiao valve group. They represent Jianqiao valve group's "employee oriented business philosophy, customer-oriented business philosophy, and human and social oriented business philosophy." Jianqiao valve group is willing to provide employees with a warm and comfortable working environment by virtue of "integrity, innovation, safety and efficiency"; Provide customers with high-quality products and first-class services exceeding customer satisfaction; To contribute to the development of mankind and society.

## 剑桥阀业集团远景(展望)

Jianqiao valves group vision (outlook)

努力实现与客户互利共赢，努力为员工创造美好环境以及家的温馨感受。共同实现剑桥阀业集团的行业影响力。我们时刻在努力，一直在进步。

Strive to achieve mutual benefit and win-win with customers, and strive to create a beautiful environment and a warm feeling of home for employees. Jointly realize the industrial influence of Jianqiao valves group. We are always working hard and making progress.

Blank lined area for writing on page 84.

Blank lined area for writing on page 85.